



**2016**

# GLOBAL DOHNE CONFERENCE

JULY 21 -22 | AUSTRALIA

*Celebrating*  
**50 years**

**“A must for all sheep producers”**

**“Dohne Genetic Evaluation on the  
World Stage”**

**Hamish Chandler, Manager – Sheep Genetics**

# Who are Sheep Genetics?



**Hamish Chandler**  
Manager



**Caris Jones**  
Development  
Officer



**Nicole Williams**  
Project  
Administrator



**Clara Collison**  
Development  
Officer



**David Rubie**  
Database Manager



**Fiona McLoughlin**  
Project  
Administrator

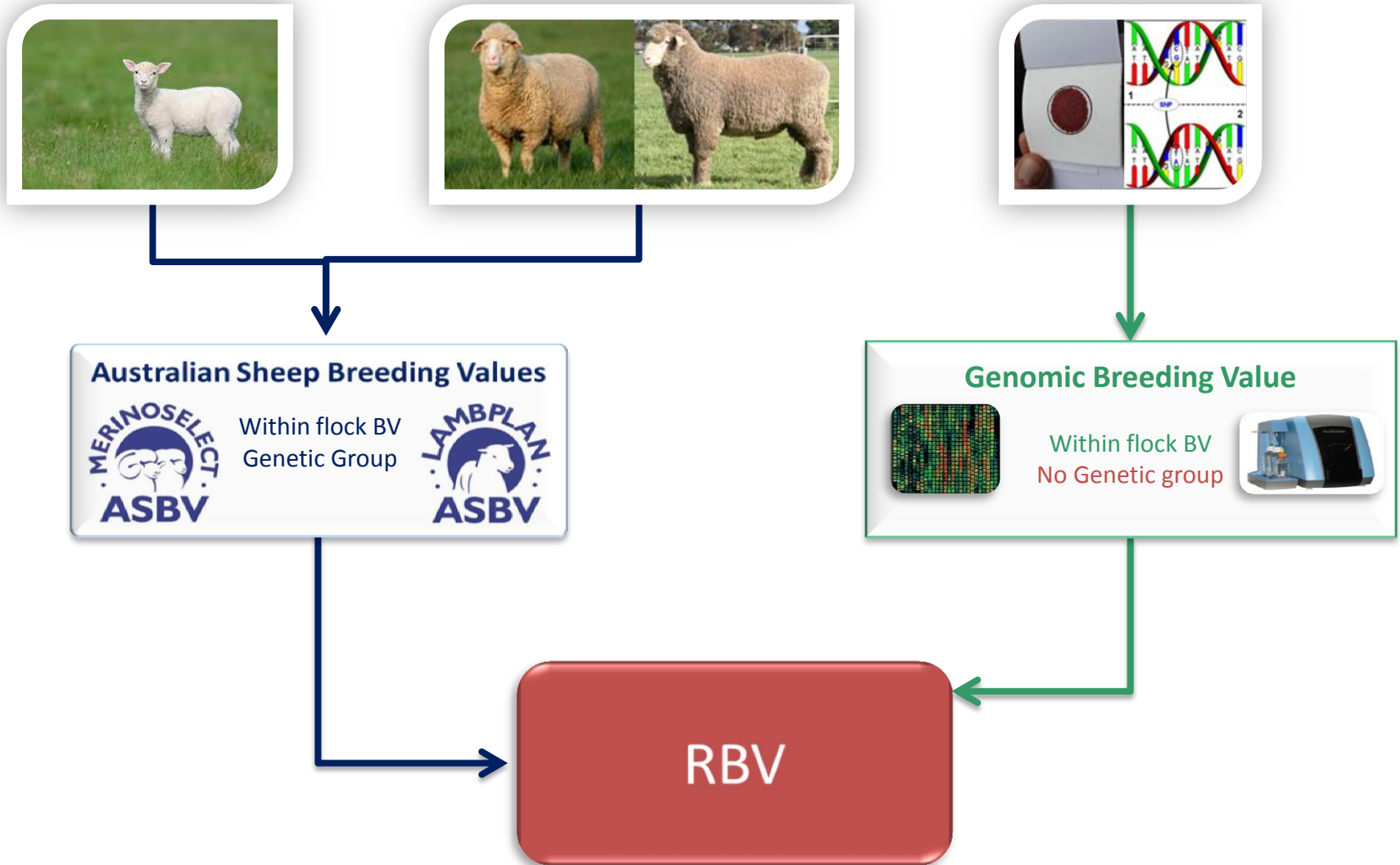


**Stephen Field**  
Database Manager

# The purpose of Sheep Genetics?

- SG is the national genetic evaluation service for the Australian sheep industry.
- Our role is to provide tools for producers to breed the sheep that they want.
- Success measured by rate of genetic improvement by the number of animals.

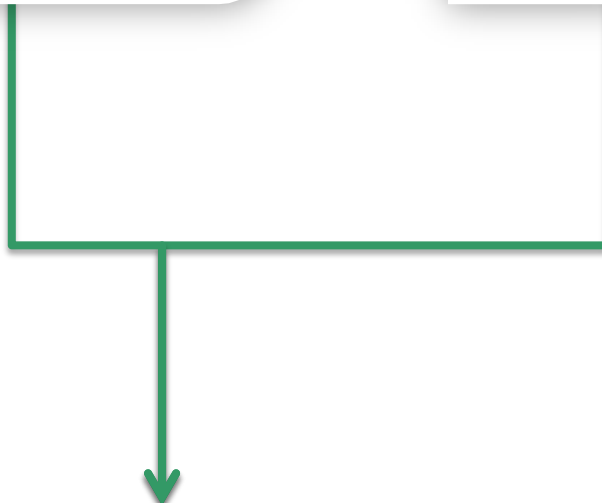
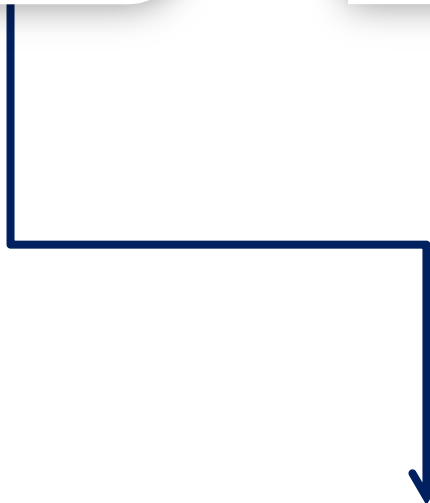
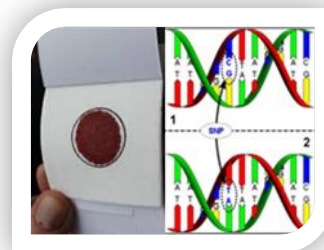
# Analysis Upgrades – Blended





# Analysis Upgrades – Single Step

SHEEP GENETICS



**Australian Sheep Breeding Values**



Within flock BV  
Genetic Group



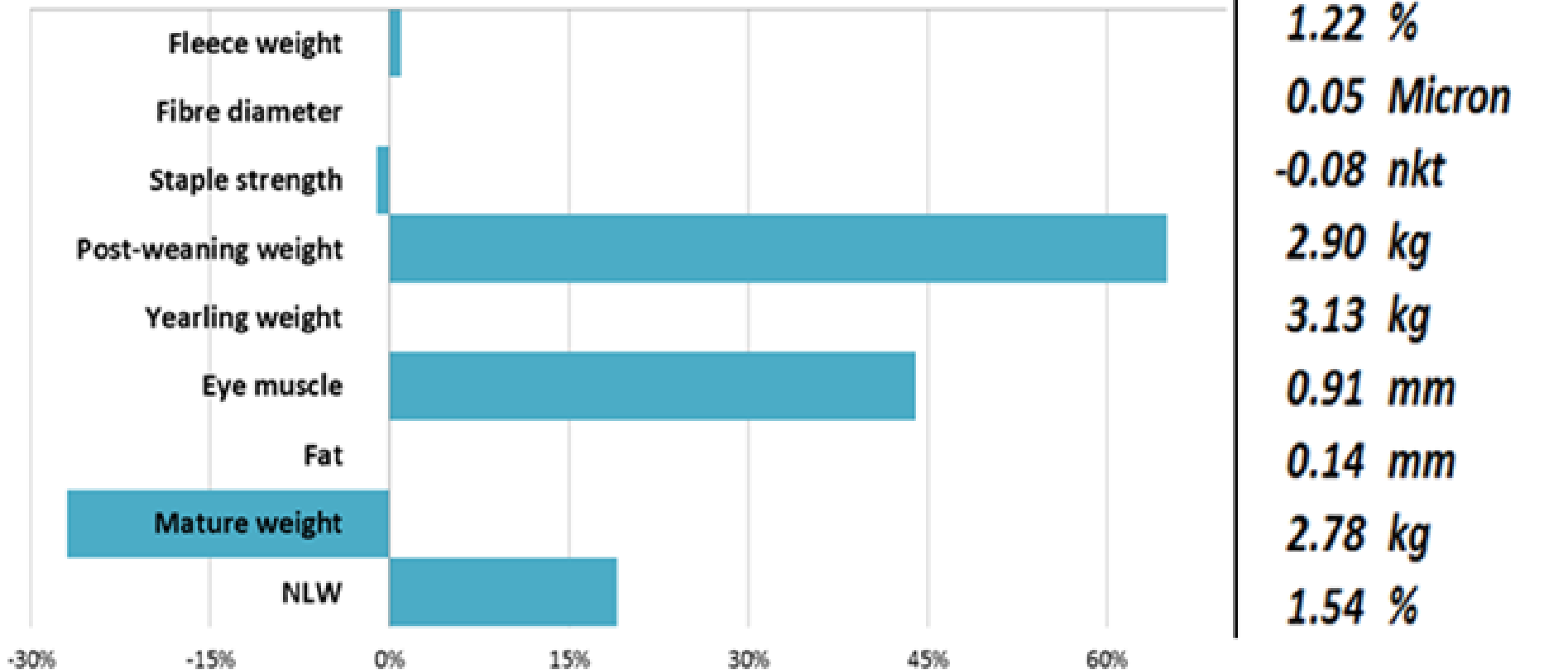
# Analysis Upgrades – Single Step

- In 2016 we make the transition from Eating Quality RBVs to ASBVs
- All animals will have breeding values for all traits → reporting still subject to accuracy thresholds
- ASBVs for EQ traits now available for on more animals

# Dohne Index

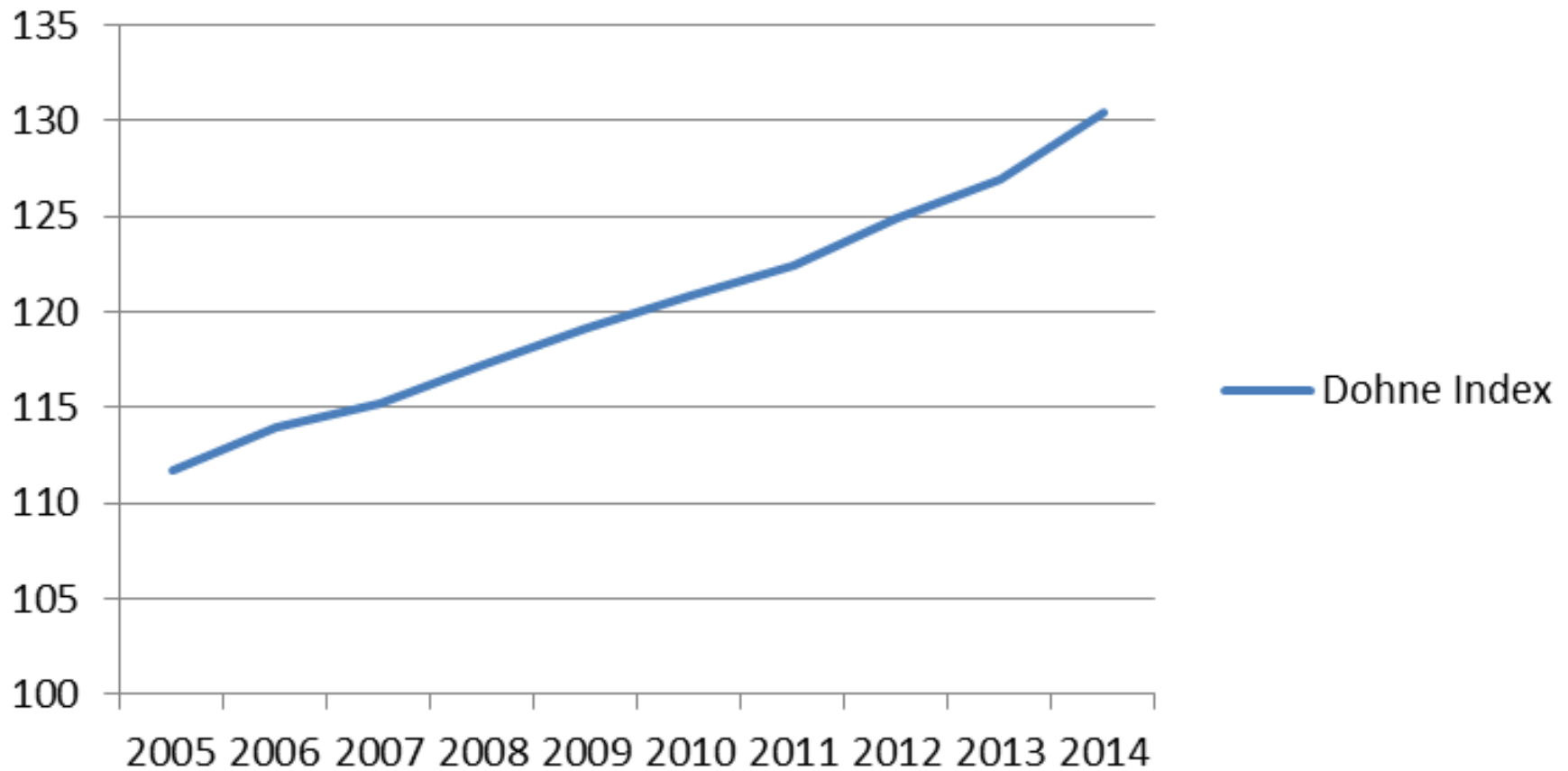
*Percentage of Trait Economic Contribution*

*10 Year Genetic Gain*



# Dohne Genetic Trends

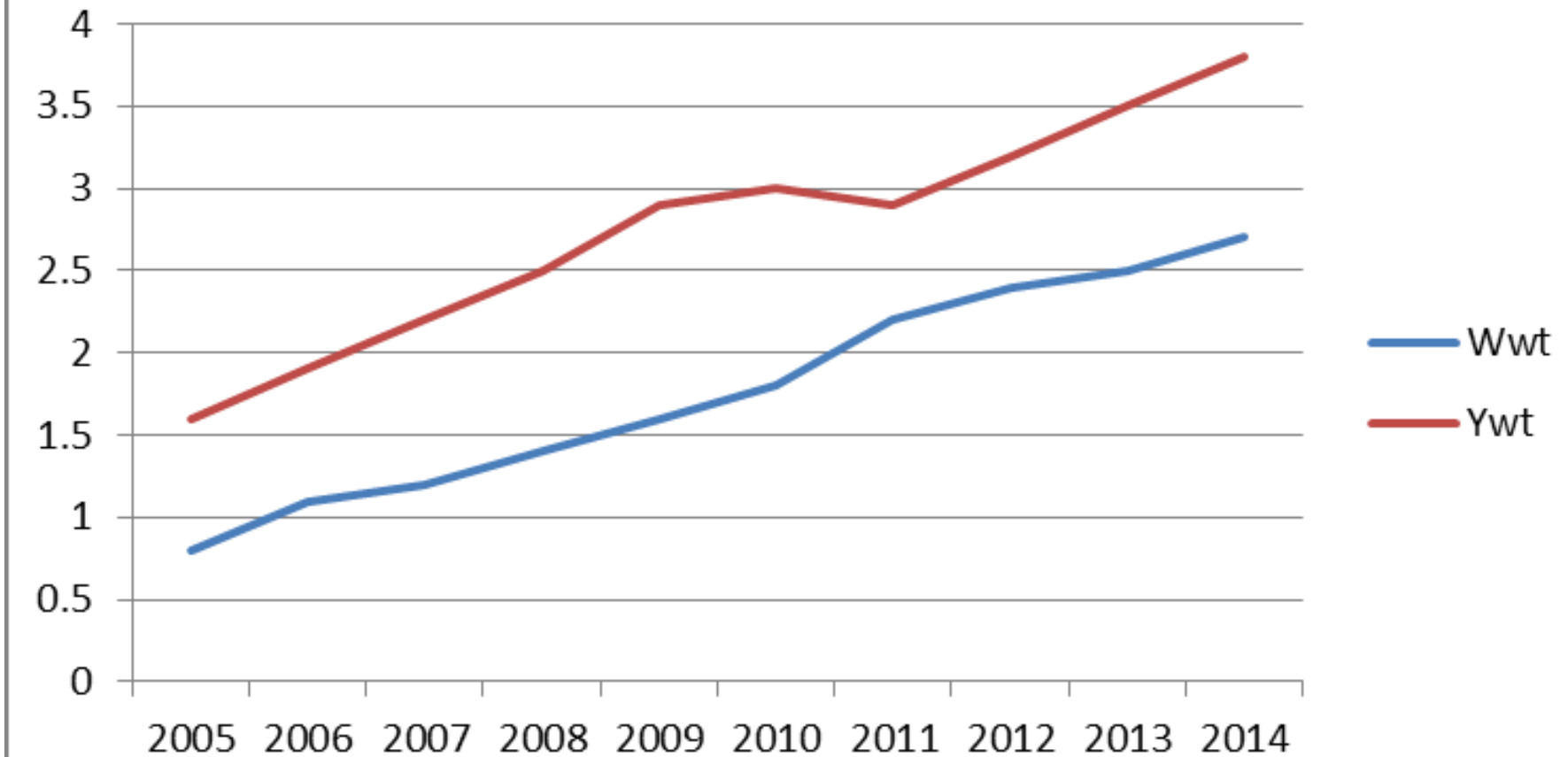
## Dohne Index





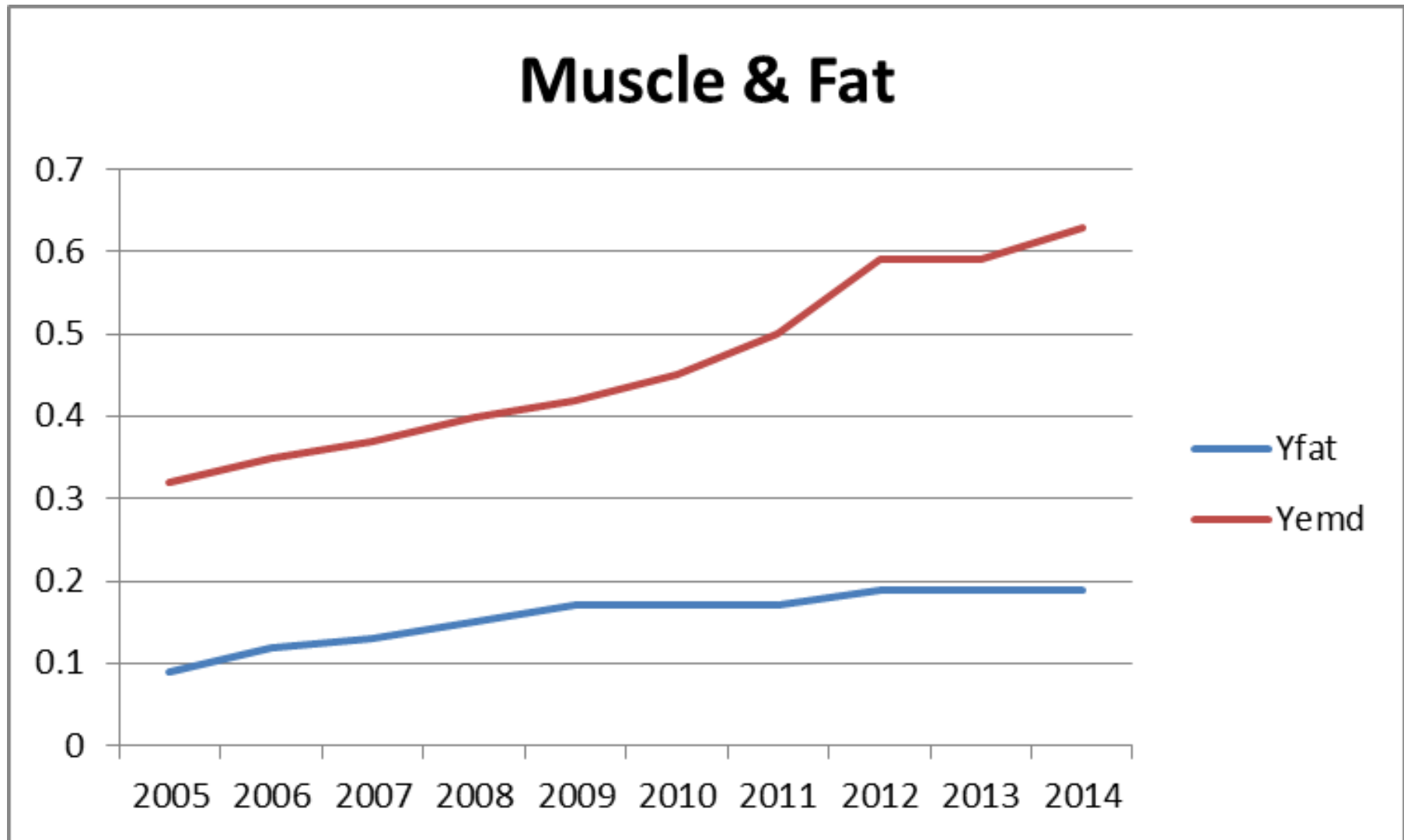
# Dohne Genetic Trends

## Growth



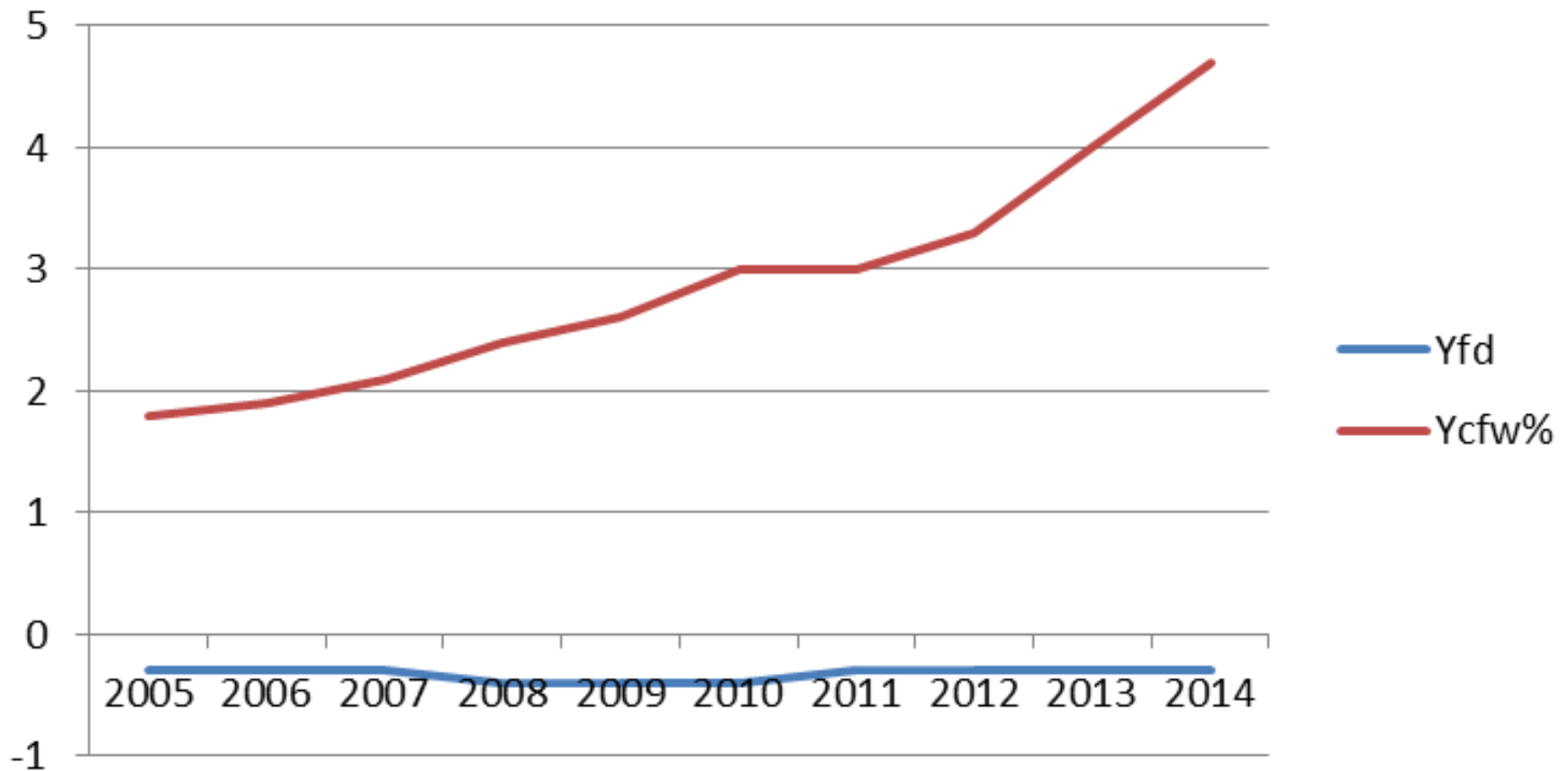
# Dohne Genetic Trends

## Muscle & Fat



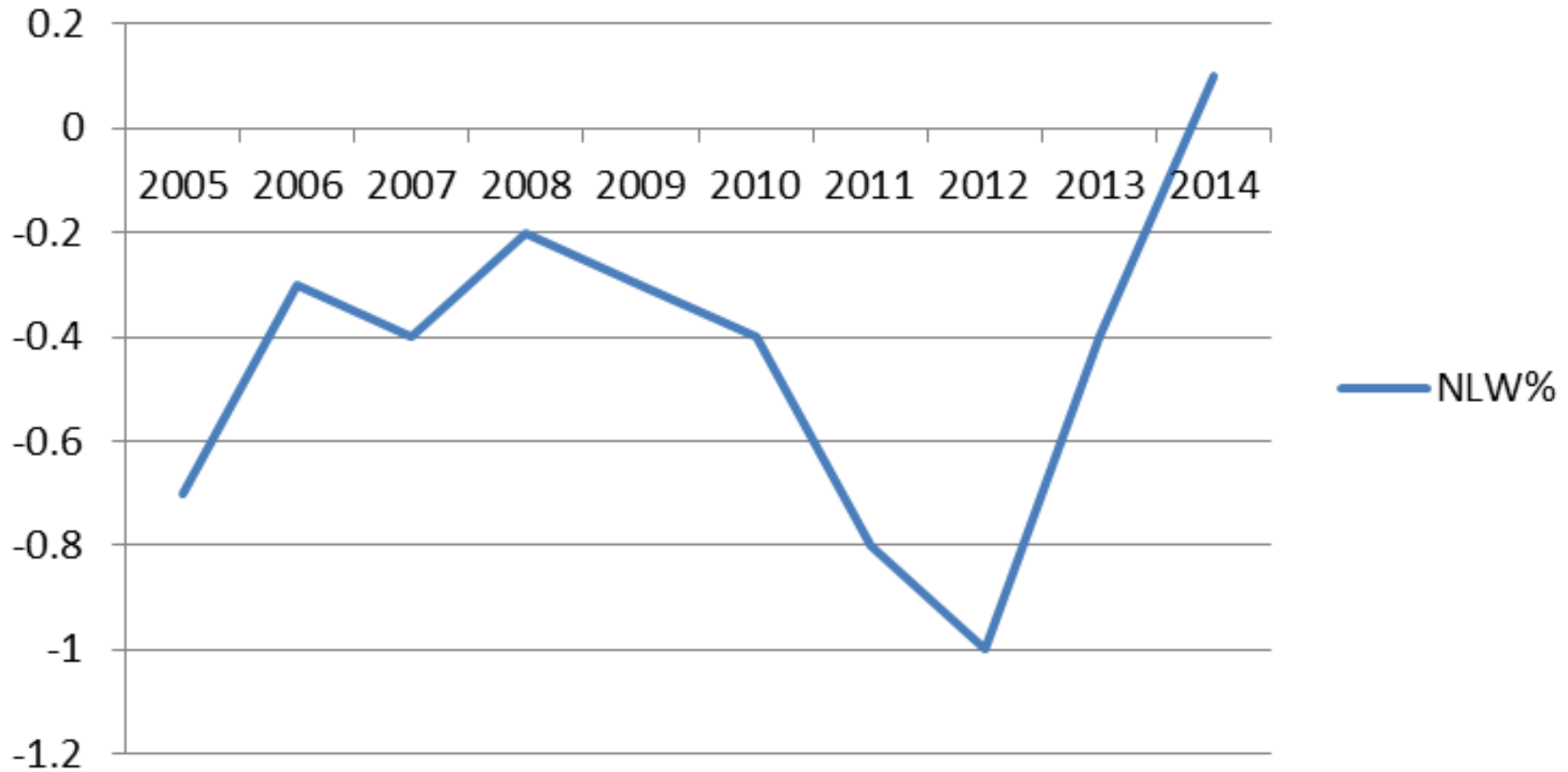
# Dohne Genetic Trends

## Fleece

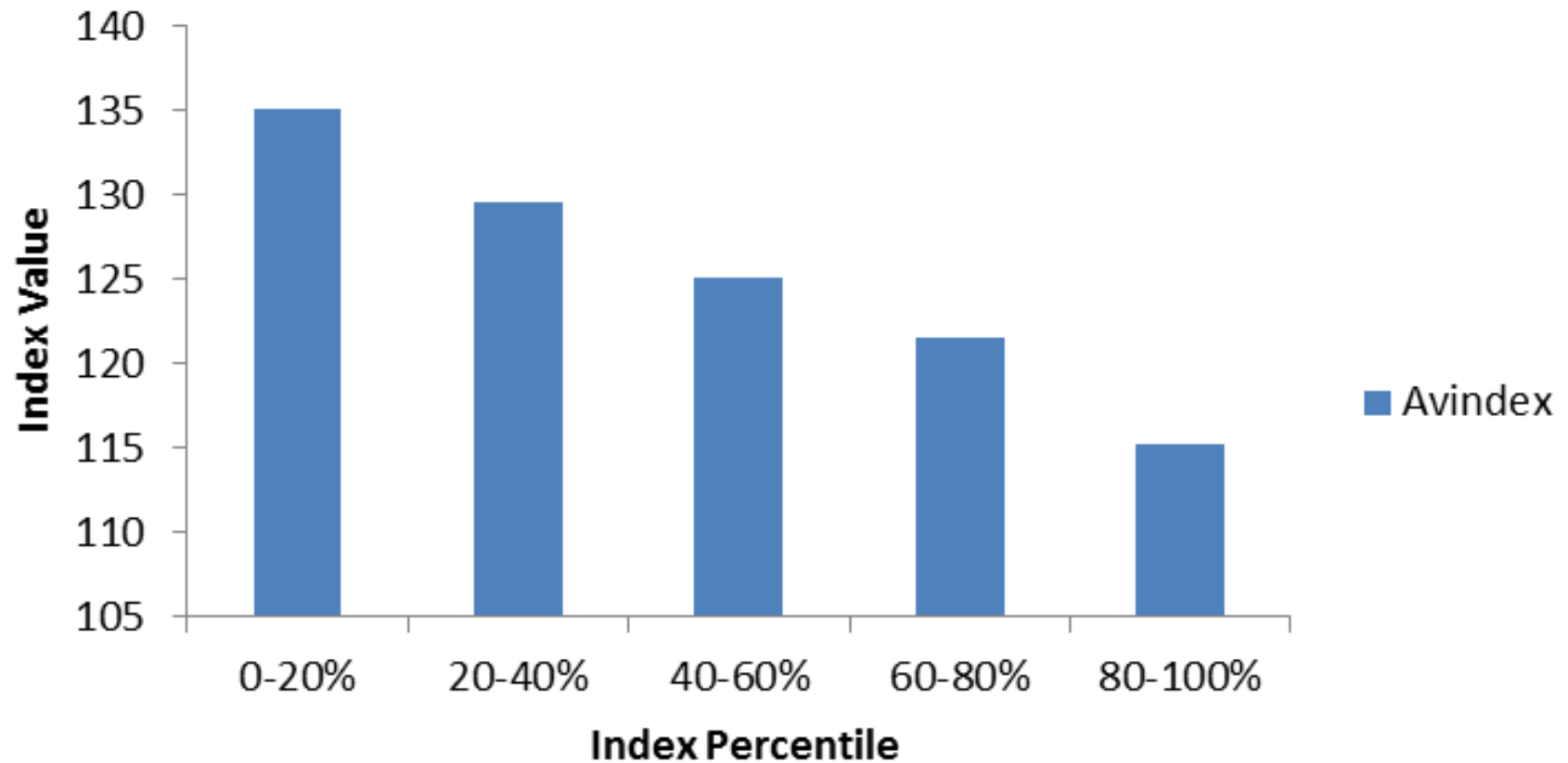


# Dohne Genetic Trends

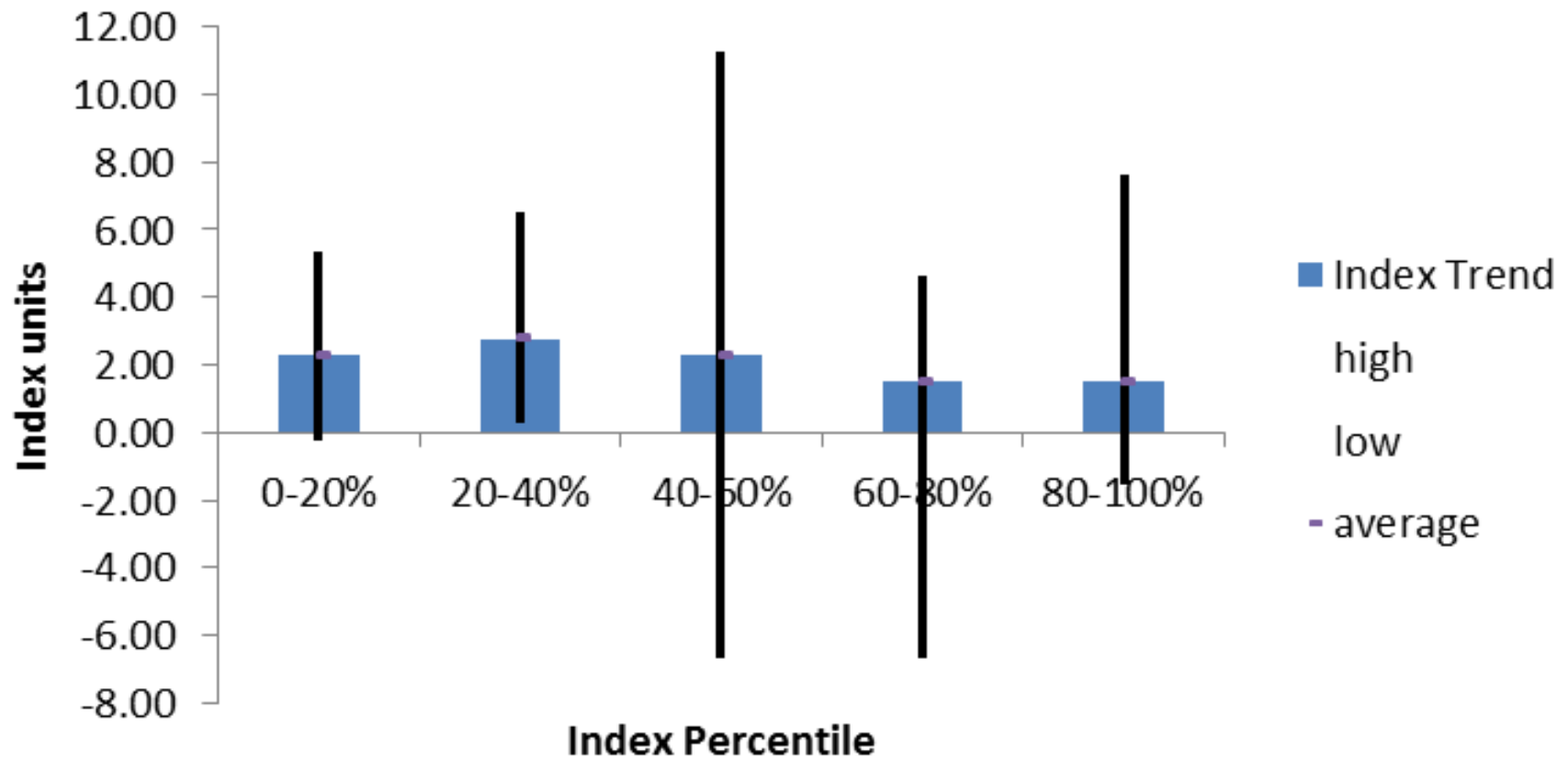
## NLW%



## Average index



## Index Trend





# RAMping up genetic gain

SHEEP GENETICS



## Project Aims

- Improve Breeding Program Effectiveness and Genetic gain:
  - Develop series of on farm reports
  - Identify potential barriers to genetic gain through benchmarks
  - Develop clear recommendations
- Develop training package that accredited Service Providers can use
- Reports available via Dashboard for SP and Breeder access
- Allow a more proactive approach

# Breeders Equation

**Selection intensity:**

Select only the very best animals

**Selection accuracy:**

Pick the best ones more often

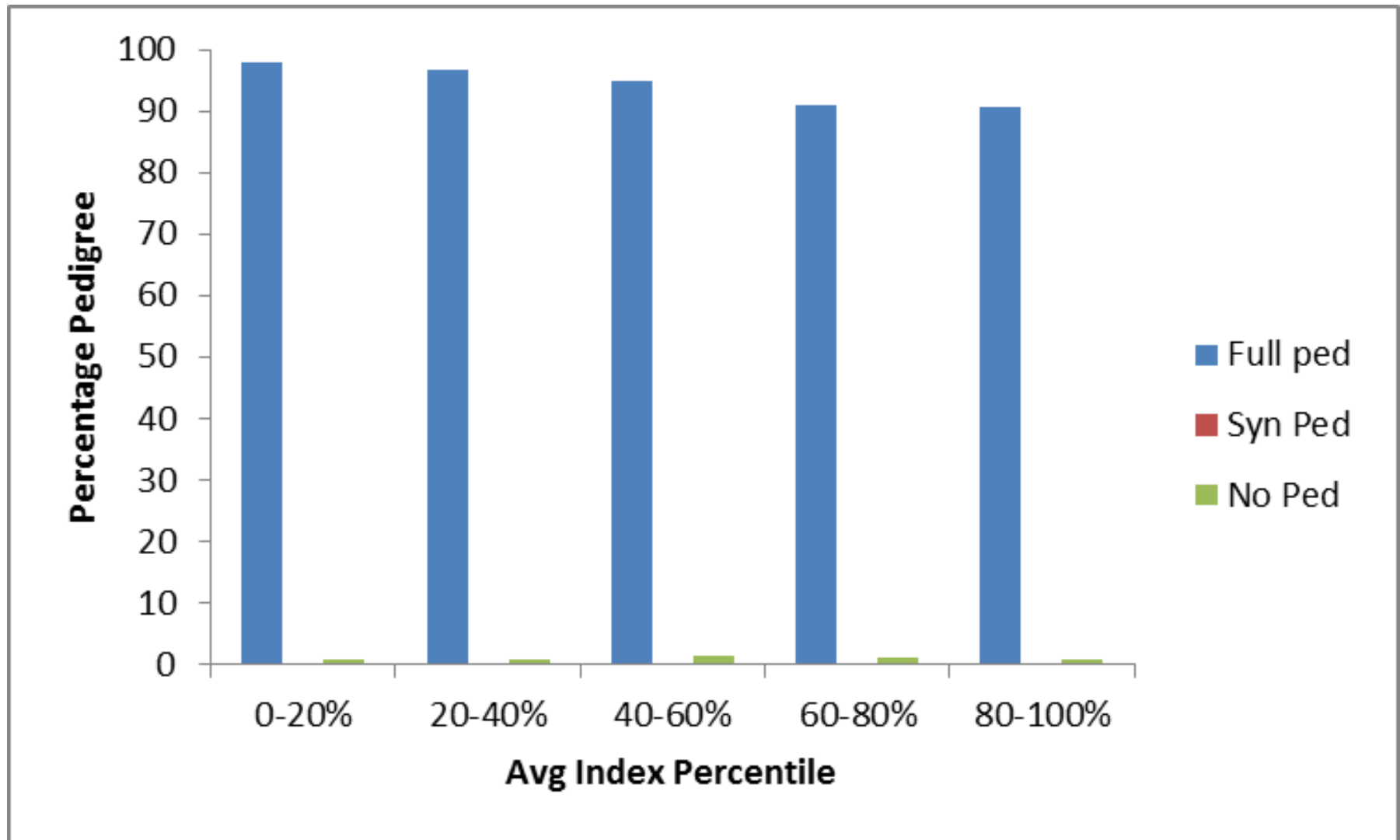
**Generation Interval:**

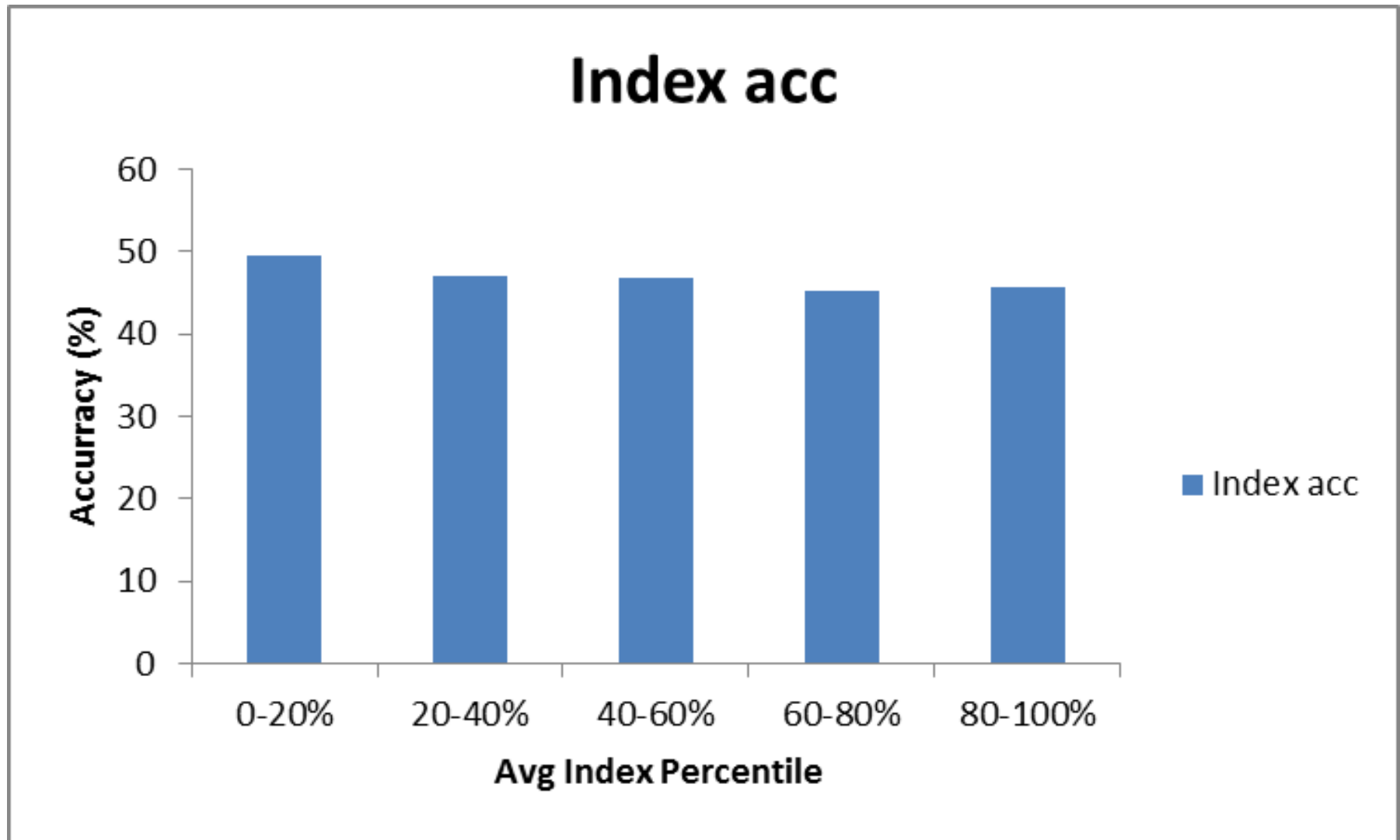
Breed from them as soon as possible

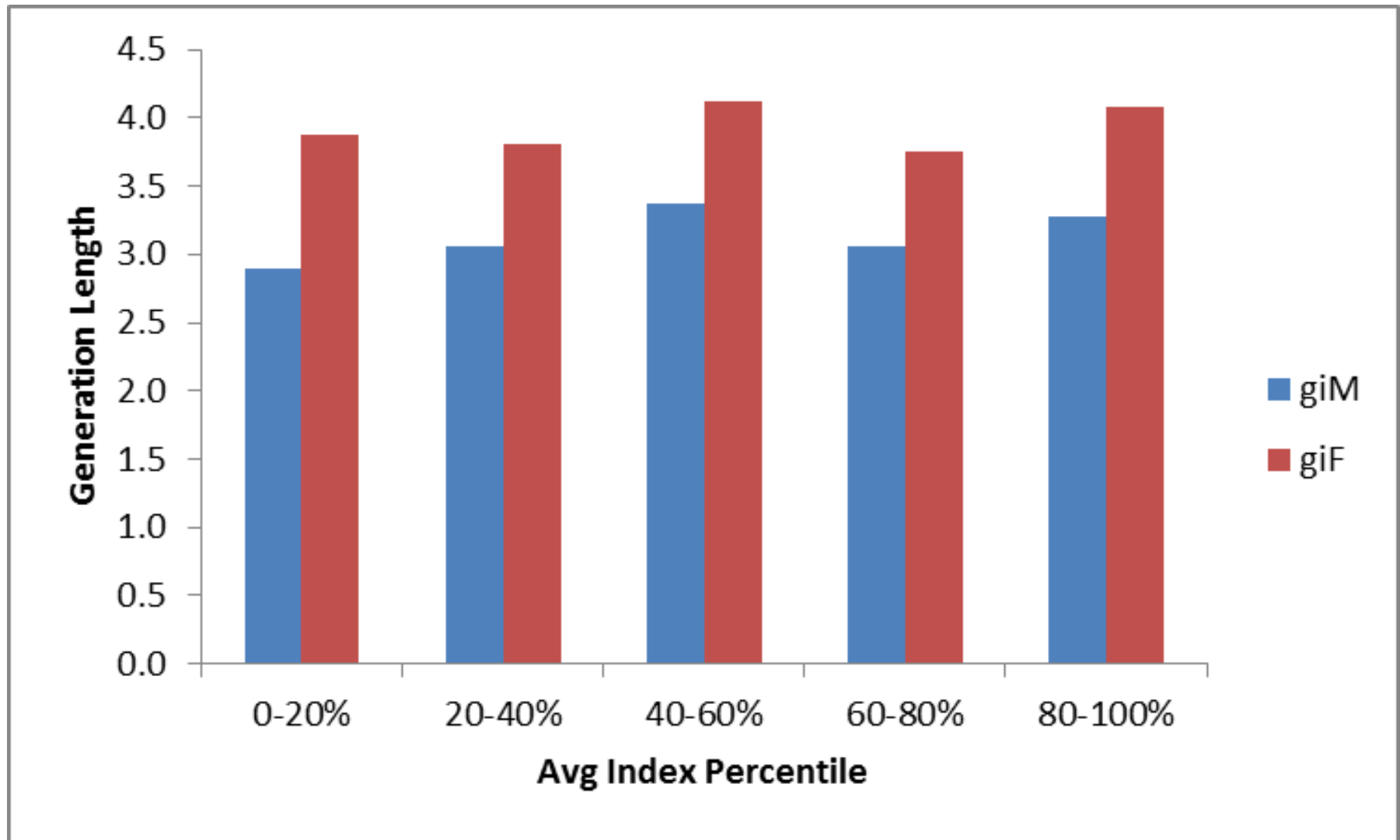
**Variation:**

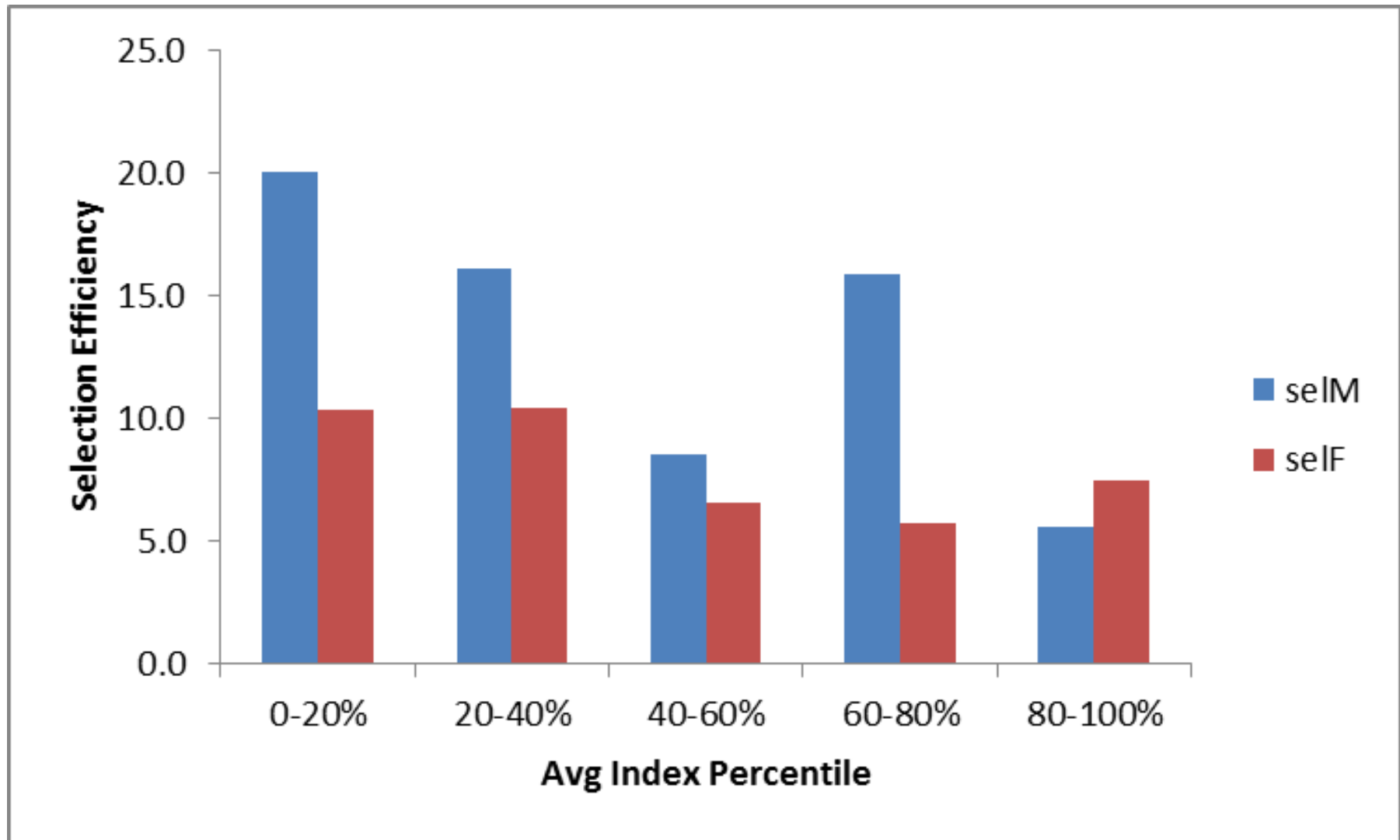
Different enough to pick from













# Commercial Breeders

- Rams;
  - Which ASBVs & index match your breeding objective
  - Select rams with the best available ASBVs in your price range that are functional
  - Ram audit, annually review all rams in the sire team, are they good enough to still be there?
    - How long have you been keeping them?

# Commercial Breeders

- Ewes;
  - How have you been selecting your replacement ewes?
    - Visual only/Visual and measurement
  - How could this be done with higher accuracy?
    - Records for weight and preg scan?
    - RAMPOWER?
    - Singles vs twins
  - Culled on age or performance?

# Global Dohne Evaluation

- Useful if genetics are being, or can be, exchanged between countries
  - Can we identify genetic linkage?
- A global evaluation has the potential to identify more variation with higher accuracy
  - Potential for higher rates of gain
- Already several international flocks in the Sheep Genetics Dohne evaluation

# Global Dohne Evaluation

- Direct international subscription through ABDA
- Submission through association/society
  - If alignment with ADBA
- Data exchange between Sheep Genetics and other service providers
  - E.g. Trans-Tasman data exchange with SIL for Maternal breeds
- Needs to be tested on a case-by-case basis

# Key points

- Dohne rate of genetic progress is good
  - Driven by accuracy of selection
- Rate of gain could be improved by;
  - Higher selection efficiency, better use of BVs
  - Shorter generation interval
- Scope for more global collaboration