

The latest updates for landholders across the
Central Tablelands of NSW.

[View this email in your browser](#)



November 2015

[Ideas and Inspiration at the first rural women's network meeting in Bathurst](#)

[Dry spell taking hold across Mudgee district](#)

[Wool and sheep meat survey - closes soon!](#)

[Common pasture weeds around now](#)

[Common grass seeds and their impacts](#)

[Paraboss News - liver fluke in the Central Tablelands](#)

[Stock feed banking](#)

[Do you have your breeding objectives sorted?](#)

[DPI Water now established - apply online for your water needs](#)

[Webinar - sheep grazing management](#)

[Quarterly newsletter available from the Graham Centre](#)

[Size does matter - learning more about the Purple Copper Butterfly](#)

[Southern Australia bushfire outlook](#)

[Indigenous team bring Aboriginal perspective to local Landcare](#)

[Environment and Waterways Alliance](#)

[Fish fact finding mission](#)

[Come planting in the Vale!](#)

[Training available for new fox and wild dog control tool](#)

[Boosting Biosecurity for Beekeepers](#)

[Vets and biosecurity staff hone skills in animal disease management](#)

[Healthy Land Healthy Horses seminar series](#)

[Horticulture - best practice guides and new app for veggie pests](#)

Ideas and Inspiration at the first rural women's network meeting in Bathurst

Ideas and inspiration were centre stage at the inaugural meeting of the [Women in Productive Pastures Network](#) held at Bathurst in October. LLS Senior Land Services Pastures Officer, Clare Edwards organised the event to bring together like minded women interested in productive agricultural landscapes, enterprises and potential industries. The idea of forming a network attracted a diverse group of women including tree changers in their 50s and 60s launching into the rural sector for the first time, partners in established family farming operations, young women looking to make stronger connections with the rural sector, and women who were sole traders growing prime lambs, cattle and niche agricultural enterprises.

Dry spell taking hold across Mudgee district

Landholders in the Mudgee district have been urged to assess feed and water supplies and start planning ahead for a prolonged dry spell, as the season rapidly deteriorates. Central Tablelands LLS is watching the weather and making tentative plans to hold information meetings in the worst affected areas in coming weeks if forecast dry weather continues. [Assistance is available](#) via the NSW Drought Strategy which focusses on preparedness, improved decision making and targeted support for rural communities.

Wool and sheep meat survey - closes soon!

Meat and Livestock Australia and Australian Wool Innovation are seeking responses in a [survey](#) to more accurately generate production trends in order

for producers to make better informed decisions. Survey closes 31st October.

Common pasture species around now

Do you have an unknown plant growing in your pasture? Could it be a weed? Senior Land Services Officer Clare Edwards has put together some of the most [common pasture species](#) that landholders have brought into the Local Land Services in recent weeks.

Common grass seeds and their impacts

Grass seeds can have a significant impact on livestock enterprises by affecting animal health and production outcomes such as wool contamination. Management options are available [explains](#) Senior Land Services Officer Clare Edwards.

Paraboss News - worms, flies and lice in sheep

[Paraboss News](#) provides locally relevant and expert updates on what is happening in the three main animal health problems of sheep: worms, flies and lice. The website provides detailed management information and regional programs that assist in managing these parasite risks.

Liver fluke infestations (fascioliasis) are common in sheep, cattle and goats in the NSW Central Tablelands. On-farm surveys and abattoir surveillance have detected that at least 80% of Central Tablelands properties have fluke. Central Tablelands LLS Regional Veterinarian Bruce Watt provides this [summary](#) on Liver fluke, the full article is available from the [WormBoss](#) website.

Stock feed banking

Feed banking is an option if you find yourself under stocked this season. Senior Land Services Officer Phil Cranney provides advice on [how to estimate biomass](#) and evaluate pasture composition in order to minimise risk and maximise profit.

Do you have your breeding objectives sorted?

How do you set out some clearly defined breeding objectives in order to implement a successful breeding program? Land Services Livestock Officer Brett Littler, provides a [summary](#) of the key steps in planning and implementing a successful breeding program.

DPI Water now established - apply online for your water needs

[DPI Water](#) replaces the former NSW Office of Water. It focusses on water planning and policy in urban and rural areas and will also oversee government-funded water infrastructure programs and develop more information on water for the community. You can now [apply online](#) to DPI Water for approval to construct a bore to access water under a domestic and stock right.

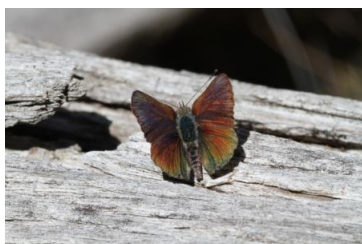
Webinar - sheep grazing management

This [webinar](#) will be presented by NSW DPI Research Scientist Dr Warwick Badgery and will offer sheep producers the opportunity to learn how grazing management and stocking rate can influence gross margins and sustainability. Dr Badgery will be presenting research from the Central Tablelands.

Quarterly newsletter available from the Graham Centre

[The Innovator](#) is a quarterly newsletter produced by the Graham Centre for Agricultural Innovation. The spring 2015 edition contains updates from the recently held beef and sheep forums, an article on Biserrula as well as numerous research updates.

Size does matter - Learning more about the Purple Copper Butterfly



The Purple Copper Butterfly is one of Australia's rarest butterfly's occurring only in the NSW Central Tablelands. Forty five people recently attended an [information day near Bathurst](#) to learn more about its needs and how they can work with the Central Tablelands LLS to protect the butterfly and it's habitat.

Southern Australia bushfire outlook

The Southern Australia [bushfire outlook](#) for summer 2015-16 reports that there is a higher than average probability of bushfires in our region. The report says that "Winter rainfall totals have been near the long-term average over central inland areas. The three-month climate outlook is suggesting further average rainfall. As a result, high grass growth could be a concern when the soils begin to warm in spring. An above normal fire season is expected in these areas. "



Indigenous team bring Aboriginal perspective to local Landcare

Orange Local Aboriginal Land Council's Gaambuwananha Ngurambang team recently won an award at the 2015 NSW Landcare Awards for their efforts to restore Aboriginal cultural links to [land management](#). The team are skilled in Conservation and Land Management and work to rehabilitate the land with a focus on healing Country and Community.

Environment and Waterways Alliance

The Central West Councils [Environment & Waterways Alliance](#) is a partnership of 19 Councils across the Central West of NSW, supported by Central Tablelands and Central West Local Land Services, working towards improving the natural and built environment of our region. The new Alliance website and 5 year plan will soon be launched at an [event](#) with special guest, the Minister for Local Government, the Hon. Paul Toole.

Fish fact finding mission



Central Tablelands Local Land Services staff along with nominated representatives from local fishing clubs and Councils recently [attended the 2015 Murray-Darling Basin Native Fish Forum](#) in Sydney. The forum provided an opportunity to hear about the latest developments in the science and management to recover native fish.

Come planting in the Vale!

A [planting day](#) will be held at the Council Reserve on the Vale of Clwydd Creek on Saturday October 31st. Central Tablelands Local Land Services and Lithgow City Council, with support from Lithgow & District Landcare Group and Lithgow Oberon Landcare Association will be planting native trees and shrubs following willow removal last year.

Training available for new fox and wild dog control tool



[Vertebrate Pesticide Induction Training](#) (VPIT) courses will be held in Mudgee on Friday 6th November and Saturday 7th November. The VPIT now includes training for the Canid Pest Ejector, a mechanical device that has benefits over traditional baiting by delivering a precise dose and reducing impacts on non-target animals.

Boosting biosecurity for beekeepers

In October, Central Tablelands LLS held a valuable workshop on biosecurity for beekeepers. Pests and Diseases of Honeybees was presented by respected industry specialist Bruce White and NSW DPI's Nick Annand who shared their wealth of experience and practical advice. Australia is free from devastating pests such as Varroa mite and our honey producers are very keen to keep it that way. The workshop gave participants the knowledge and practical skills to check their hives for a number of pests and diseases; they learnt how to contain and manage any production problems and how to notify NSW Biosecurity if they suspect an exotic incursion. Central Tableland NSW Apiarists' Association supported the event.

Vets and biosecurity staff hone skills in animal disease management



Biosecurity Officers and District Veterinarians from Central Tablelands and Greater Sydney LLS were put through their paces at an [Emergency Animal Disease Workshop](#) held in Orange last week. The team investigated biosecurity risk scenarios based on potential FMD, Avian Influenza, Anthrax and Hendra Virus outbreaks, and also practised proper procedures in the use of Personal Protection Equipment.

Healthy Land Healthy Horses Seminar Series - Calga, Campbelltown & Terrey Hills

Hello to those landholders from our region who live in the city. Free one-day seminar to learn how to use the natural and domesticated behaviour of horses, combined with good land management practices, to create a healthy and sustainable environment for your horses and your property. Learn about horse health and welfare, pasture management systems, worm/manure management and more. Stuart Myers and Jane Myers MSc (equine) are international speakers on the subject of sustainable horse property management. More [information](#).

Horticulture - best practice guides and new app for veggie pests

New best practice management guides are now available for [Brown Rot in stonefruit](#) from the Horticulture Industry Network, and [managing insect contaminants in processed leafy vegetables](#) from Applied Horticulture Research. Also available are printable [pest and disease identification guides](#) for a variety of vegetables and the [Veg Pest ID app](#) designed to assist farmers and agricultural professionals quickly identify over 1,500 insects, diseases and disorders.

Events

31st October - Planting day at Vale of Clwydd Creek, 10 am until lunch.

Join in and plant native tree and shrubs at the Council Reserve near the corner of Mort Street and Hartley Road following willow removal conducted last year. Free barbeque lunch provided.

Contact: Stuart Lovejoy on 6350 3113

1st November - Bathurst Carp Blitz, 7.30 am to 3 pm.

Bathurst RSL Fishing Club are staging the 2015 Bathurst Carp Blitz on the Macquarie River at Berry Park. Central Tablelands LLS is supporting this event through the Local Land Services Carp Catching Champions schools competition.

Contact: Allan Wray on 6333 2318

2nd November - Corridor Planting Field Day at Caloola, 9.30 am to 1 pm.

This field day will demonstrate Best Management Practices and techniques for successful planting of native seedlings and establishing revegetation corridors.

Contact: Allan Wray on 6333 2318

5th November - Grazing Management Field Day at Boorowa, 8.30 am to 12.30 pm.

Mid Lachlan Landcare in partnership with South East Local Land Services is hosting a [field day](#) with Terry McCosker (RCS) and David Marsh from "Allendale". The day will focus on how to manage time of grazing to optimise plant growth rates, match stocking rate to carrying capacity, and how to plan, monitor and manage grazing.

Contact: Scott Hickman on 0427 450 416

6th and 7th November - Vertebrate Pest Induction and Canid Pest Ejector Training Courses Mudgee, 9 am to 2.30 pm.

Contact: Mal Leeson on 6378 1707

7th November - Planting at Londonderry Reserve Hartley, time TBC.

Join in with local Landcare to plant native trees and shrubs at Londonderry Reserve.

Contact: Huw Evans on 6350 3117

12th November - Central Tablelands Regional Network Landcare Meeting, 10 am to 3 pm.

Meeting and discussion for local Landcare networks and their members.

Contact: Liz Davis on 6363 7872

23rd to 30th November - Seasonal Condition Meetings, 5.30 pm to 7.30 pm.

Seasonal condition updates will be provided for farming communities at various locations.

Contact: Brett Littler on 6378 1708 or Clayton Miller on 6333 2314



[Facebook](#)



[Twitter](#)



[Website](#)



[Email](#)

[Someone send you this newsletter? Subscribe here.](#)

Contact us

- [Your local LLS office](#)
- [On the web](#)
- [Facebook](#)
- [Twitter](#)

Your contributions

Please [email us](#) any content about events and activities across the region that are relevant to Agriculture, NRM, Biosecurity or Emergency Management.

Give us your feedback

Feedback is gratefully received.

[Please let us know](#) how we can make this newsletter more useful.

Someone sent



Copyright © 2015 Local Land Services, Central Tablelands, All rights reserved.

You received this email because you have subscribed to receive updates and news from Central West Local Land Services.

The information contained in this publication is based on knowledge and understanding at the time of writing. However, because of advances in knowledge, users are reminded of the need to ensure that information on which they rely is up to date and to check the currency of the information with the appropriate officer of Local Land Services or the user's independent advisor.

Our mailing address is:

Local Land Services, Central Tablelands
30 Lynch Street
Cowra, NSW 2794
Australia

[Add us to your address book](#)

[unsubscribe from this list](#)

This email was sent to macquariedohnes@bigpond.com

[why did I get this?](#) [unsubscribe from this list](#) [update subscription preferences](#)

Local Land Services, Central Tablelands · 30 Lynch Street · Cowra, NSW 2794 · Australia

