



**2016**

**GLOBAL DOHNE CONFERENCE**

**JULY 21 -22 | AUSTRALIA**

*Celebrating*  
**50 years**

**"A must for all sheep producers"**

**The Dohne's Role in the  
Australian Sheep Industry**

A variety of breeds have been introduced into Australia since the 1980's. Imports have been driven by:

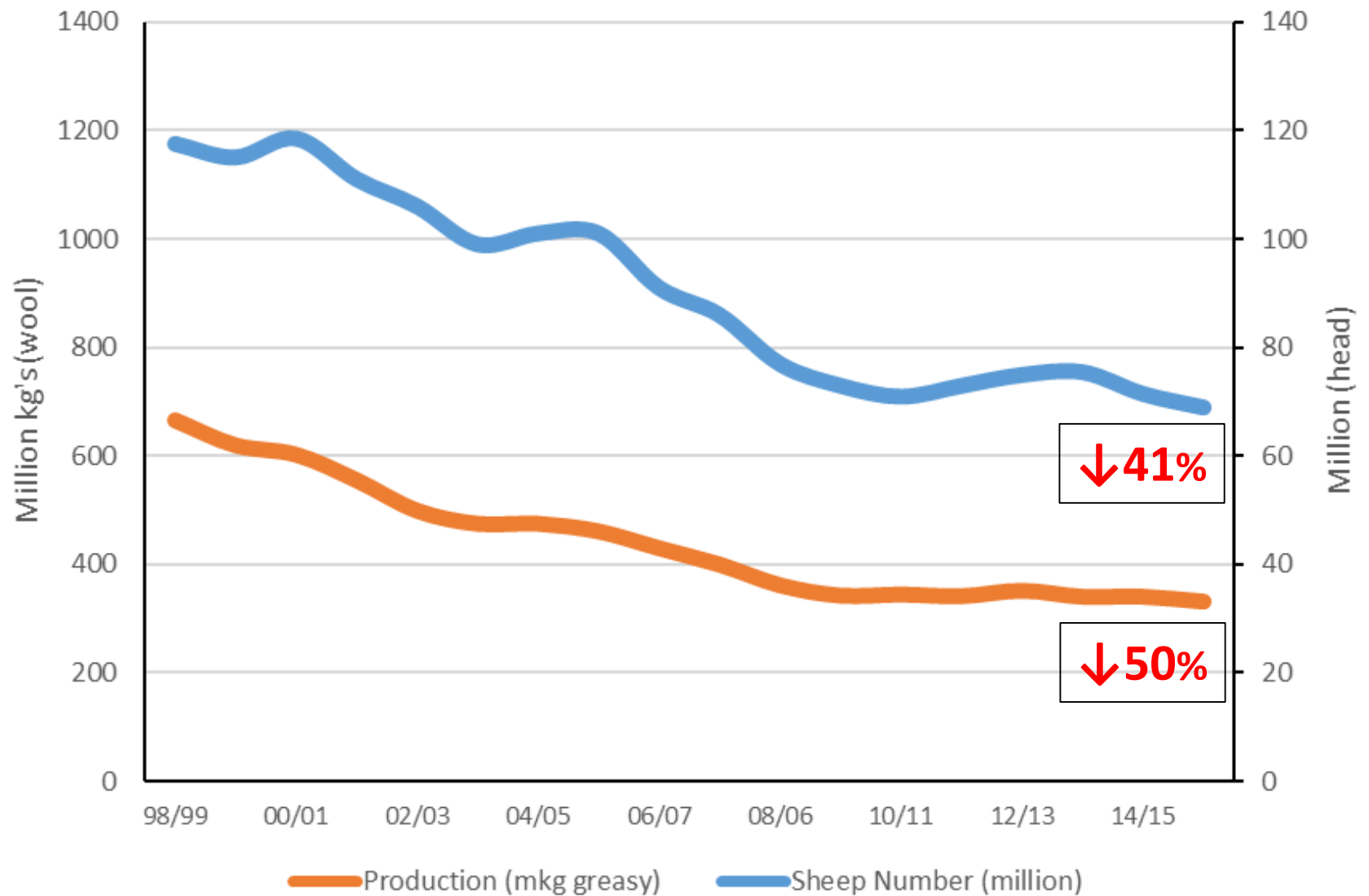
- Changes in wool industry demand and profit
- Live sheep market needs and demand
- Increasing prime lamb production focus and
- To offer producers alternatives to traditional wool or lamb production systems

# Flock and Wool Trends

Since the Dohne's introduction in 1998/99 we have seen significant declines in:

- National sheep numbers
- Wool production
- Finer wools premiums and
- Average price range between micron categories

# National Sheepmeat (c/kg); Wool (Mkg and c/kg) and Flock number (million)



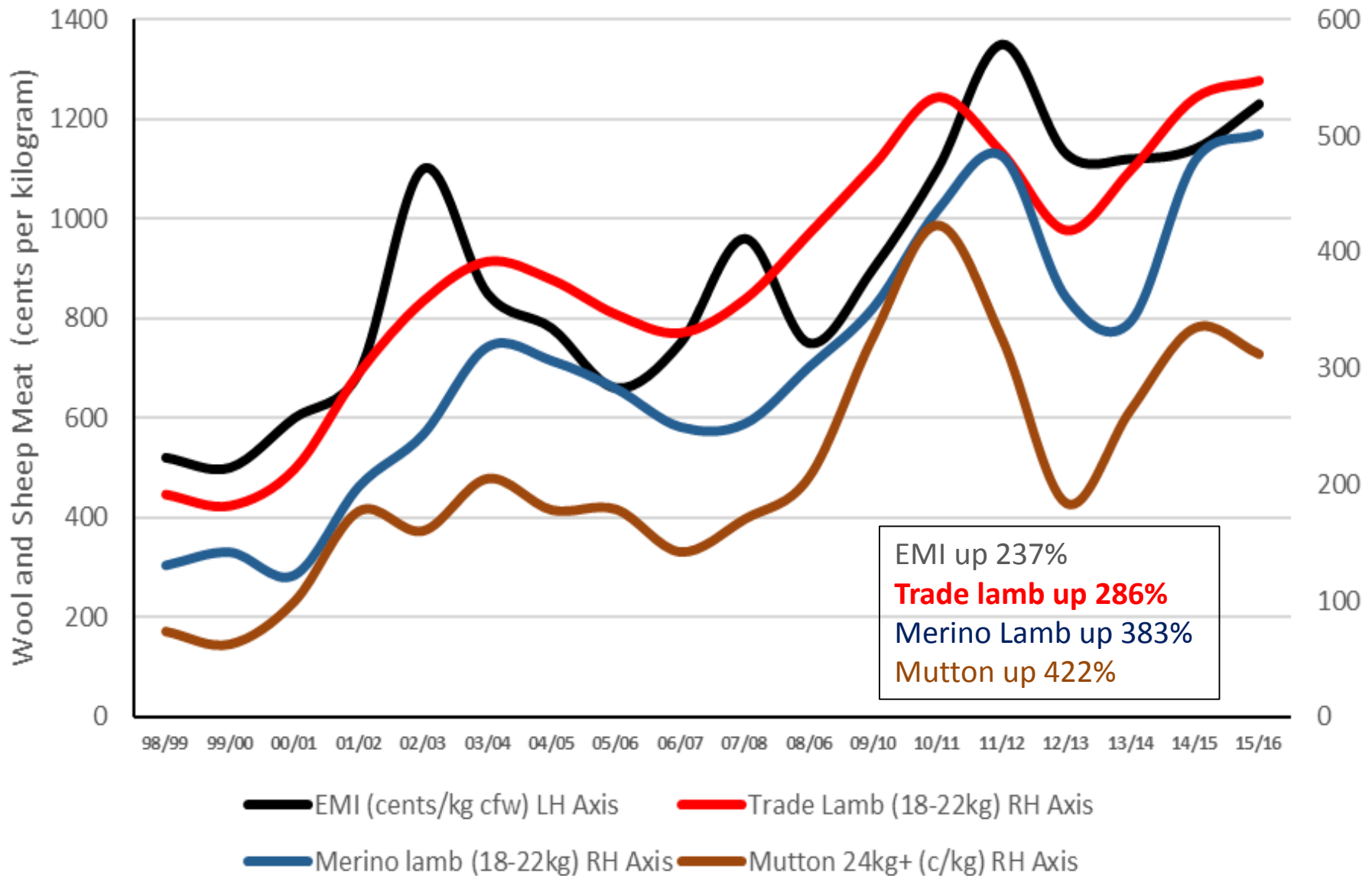
# Sheep Meat Trends

During this period however we have also seen significant improvements in:

- Wool
- Trade Lamb
- Merino lamb and
- Mutton values



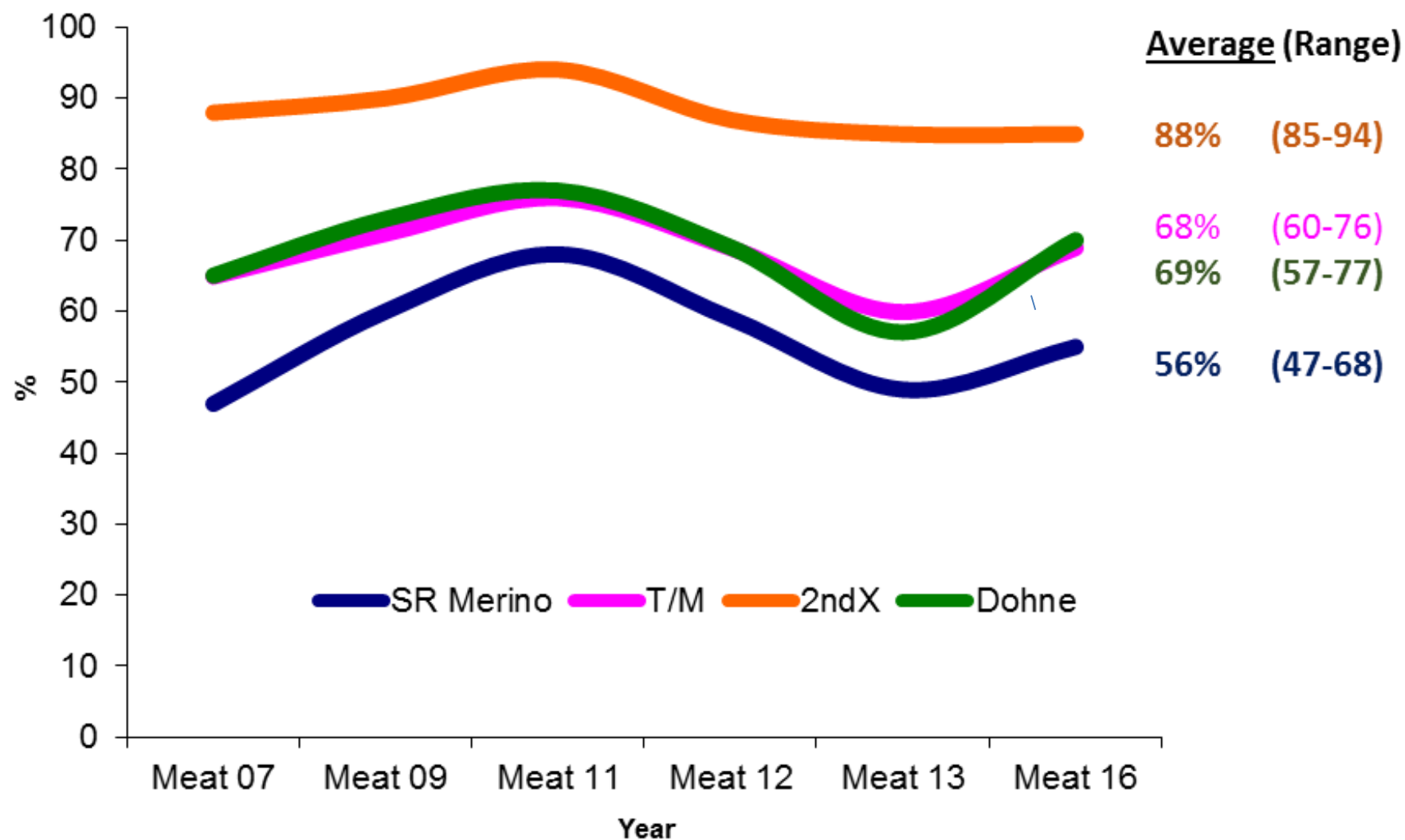
# National Sheepmeat and Wool Prices (cents/kg) (1998/99 to 2015/16)



# Sheep Meat Trends

- Nationally our sheep industries estimated gross value of production (meat vs wool) sits around ~ 60:40
- A Dohne's enterprises sheep meat/wool income share has averaged 70:30 based on Gross Margins I've undertaken since 2007

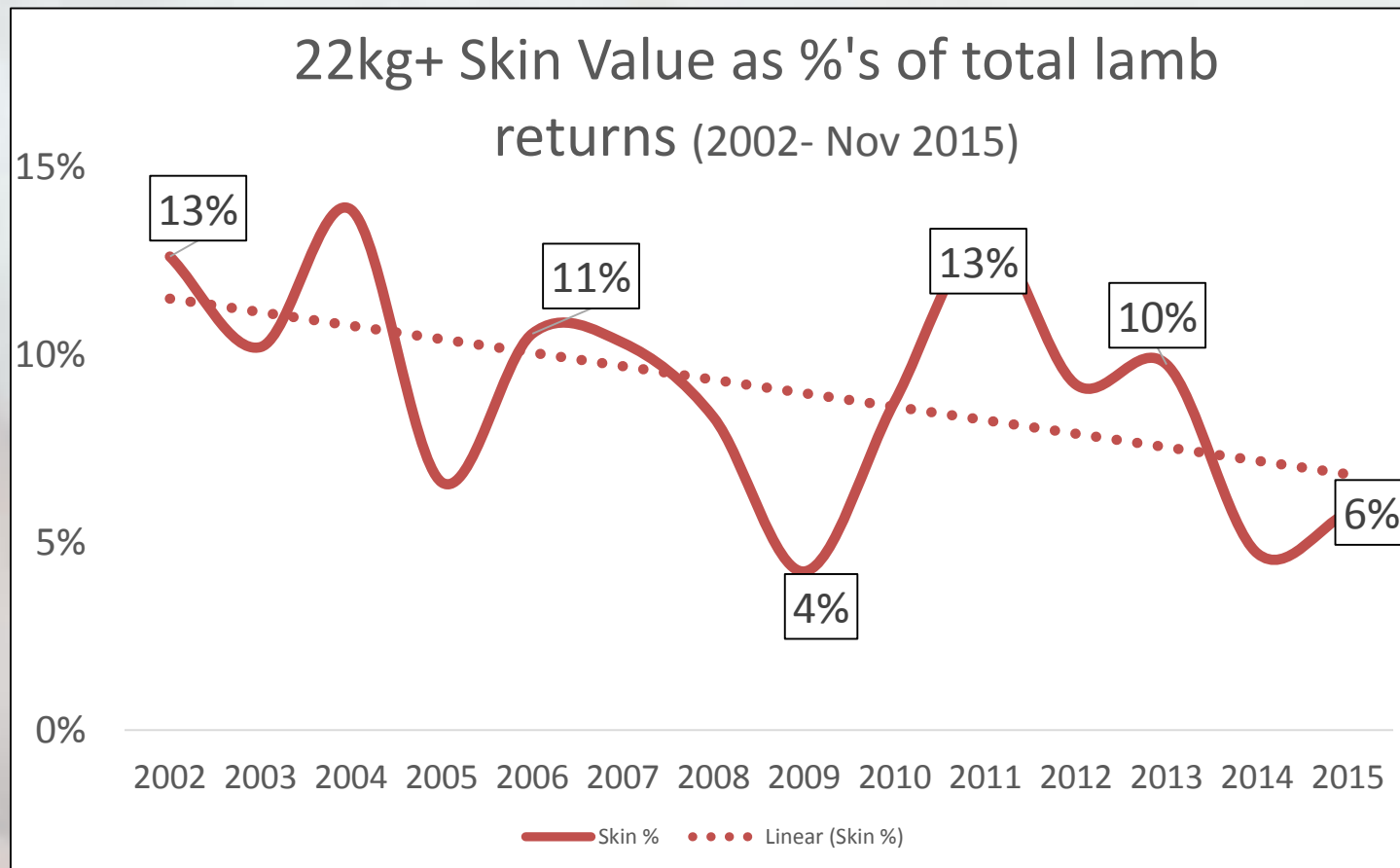
## Sheepmeat as a Percentage of Total Returns





# Sheep Meat (Skin) Trends

Since 2002 we have seen a decline in skin values as a percentage of overall sheep/lamb returns



# Sheep Meat (Skin) Trends

Values for 2 to 3 inch merino-style skins have however consistently returned more than

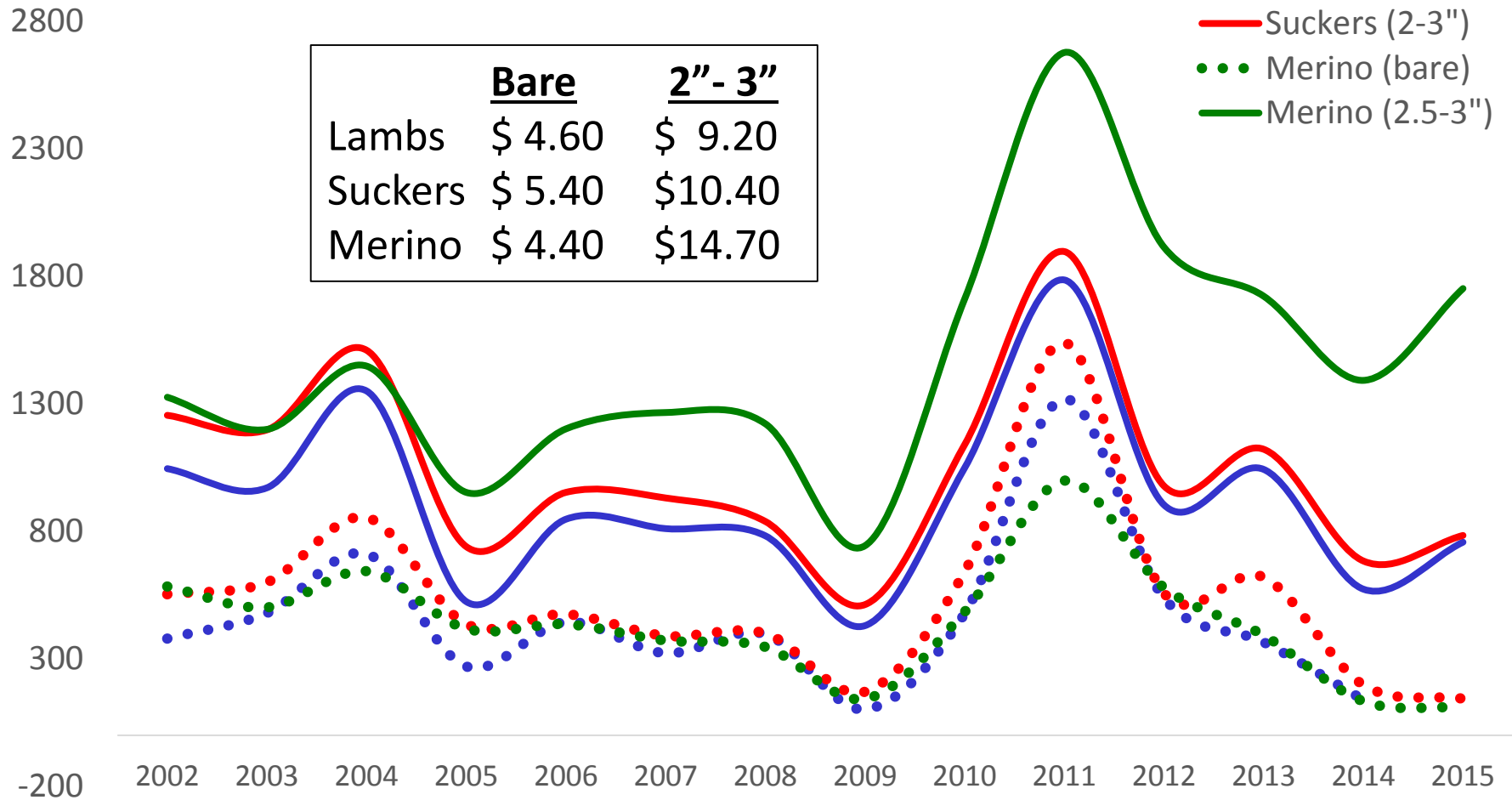
- crossbred sucker (+\$4.99) or
- older lamb skins (+\$5.90)

and have averaged similar returns if bare shorn during this period

# Sucker/Lamb and Mutton Skins (Bare; 2-3") 2002-2015

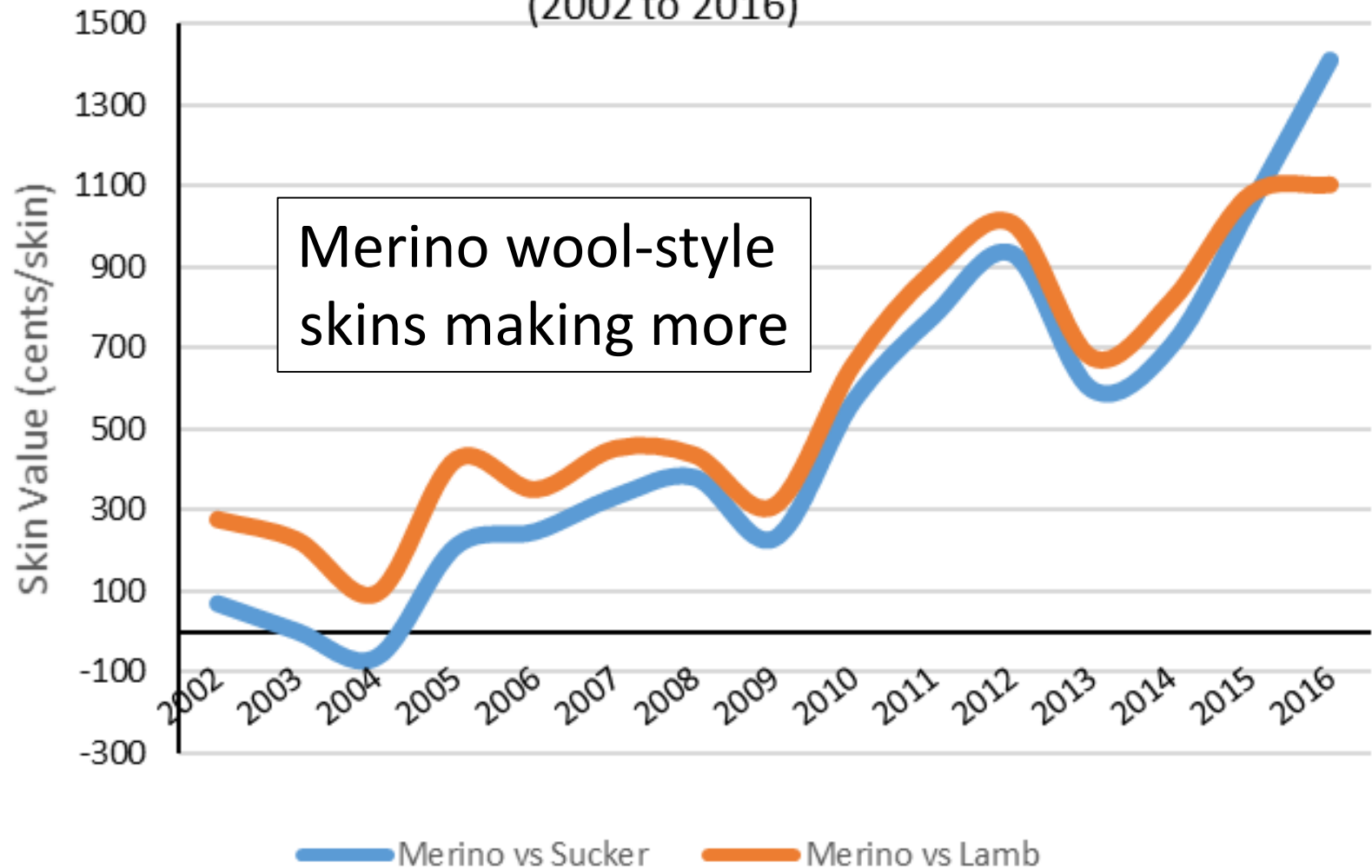
- Lambs (bare)
- Lambs (2-3")
- Suckers (bare)
- Suckers (2-3")
- Merino (bare)
- Merino (2.5-3")

	<u>Bare</u>	<u>2"- 3"</u>
Lambs	\$ 4.60	\$ 9.20
Suckers	\$ 5.40	\$10.40
Merino	\$ 4.40	\$14.70



# Average Annual Price Differences between 20-24kg Merino vs Suckers/Lambs

2" to 3" skins  
(2002 to 2016)



# Sheep Meat and Skin Trends

- As a result gross returns for Dohne lambs are generally
  - greater than Merino lambs and/or
  - equivalent to gross prime lamb returns (based on combined carcass and skin values)

# So what is the Dohne's Role

- Self replacing
  - Greater control of genetic gain
  - Rebuild national ewe base
  - Reduced biosecurity risk
- Plain bodied / open faced / bare breech
  - Fertility advantages
  - Reduced reliance on mulesing
  - Improved animal welfare
  - Reduced animal activist focus



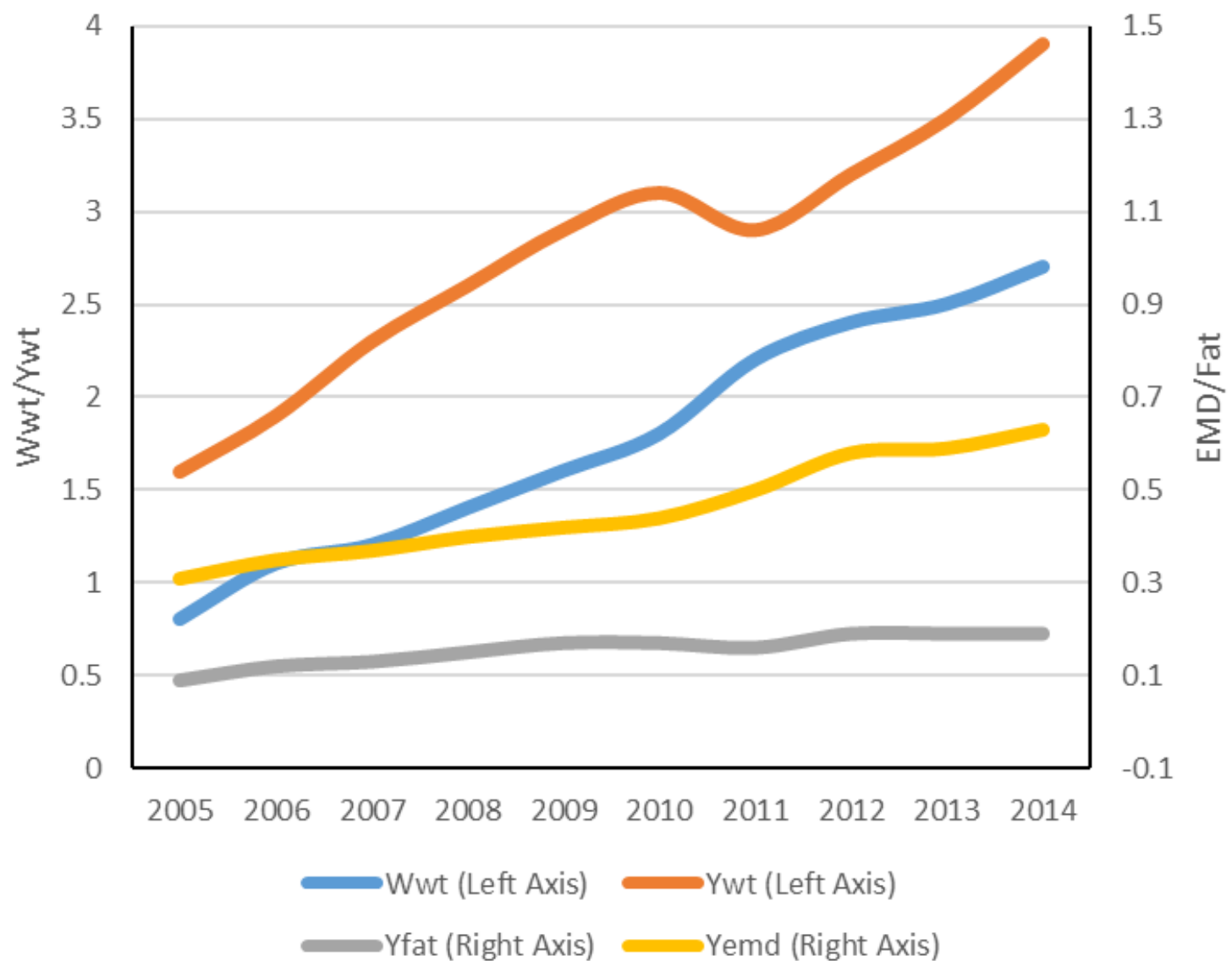
# So what is the Dohne's Role

- Early maturing / Merino wool
  - Continue to benefit from
    - high sheep meat returns
    - low worldwide wool stocks/price resurgence
  - Must however maintain focus on ewe weight/wool balance and ewe efficiency (minimise adult ewe mature weight)

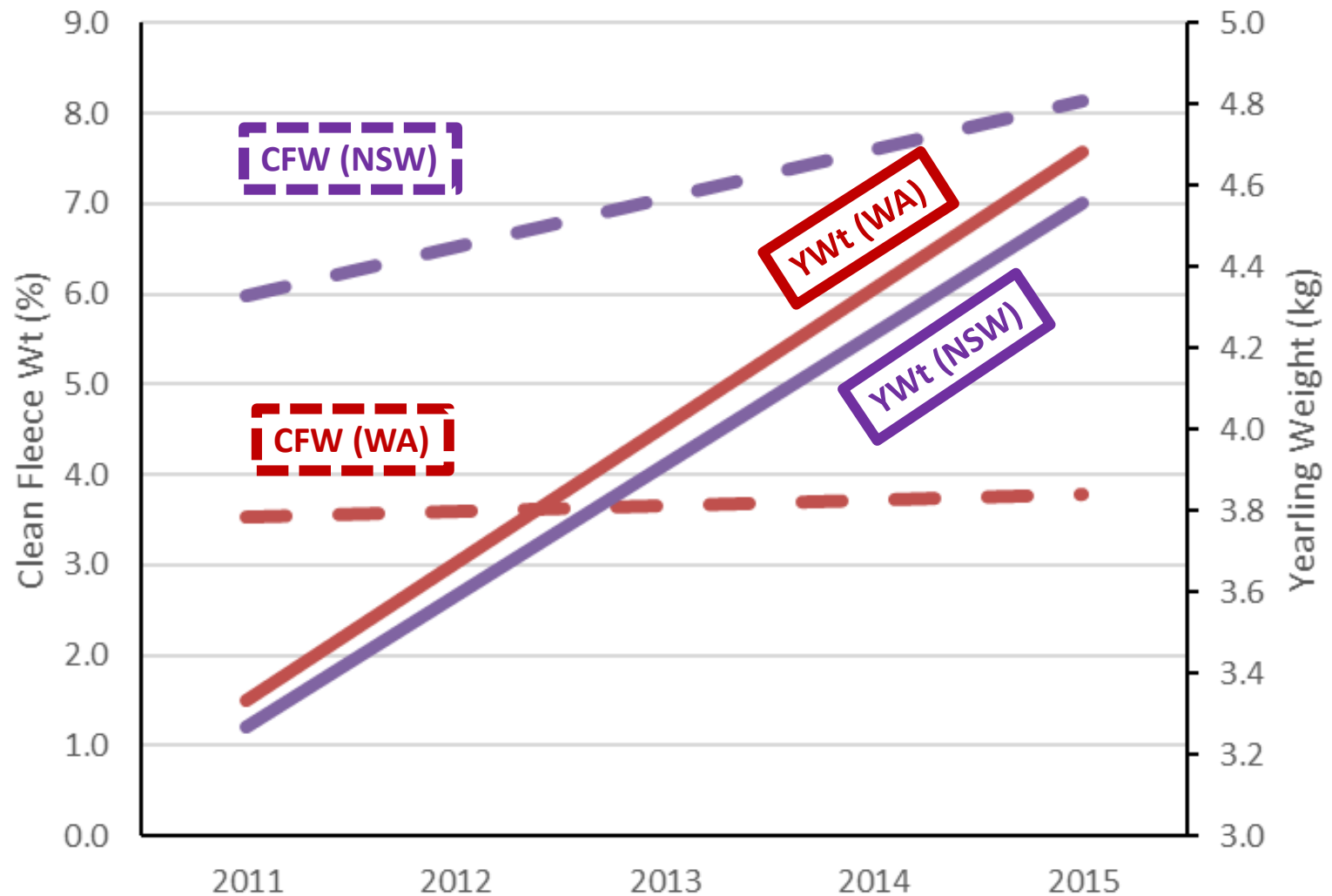
# So what is the Dohne's Role

- Improved fertility / fecundity / weaning percentages and survival rates
  - Strongly influenced by
    - breeds genetic fat and muscle
    - Emphasis on wool cut per head

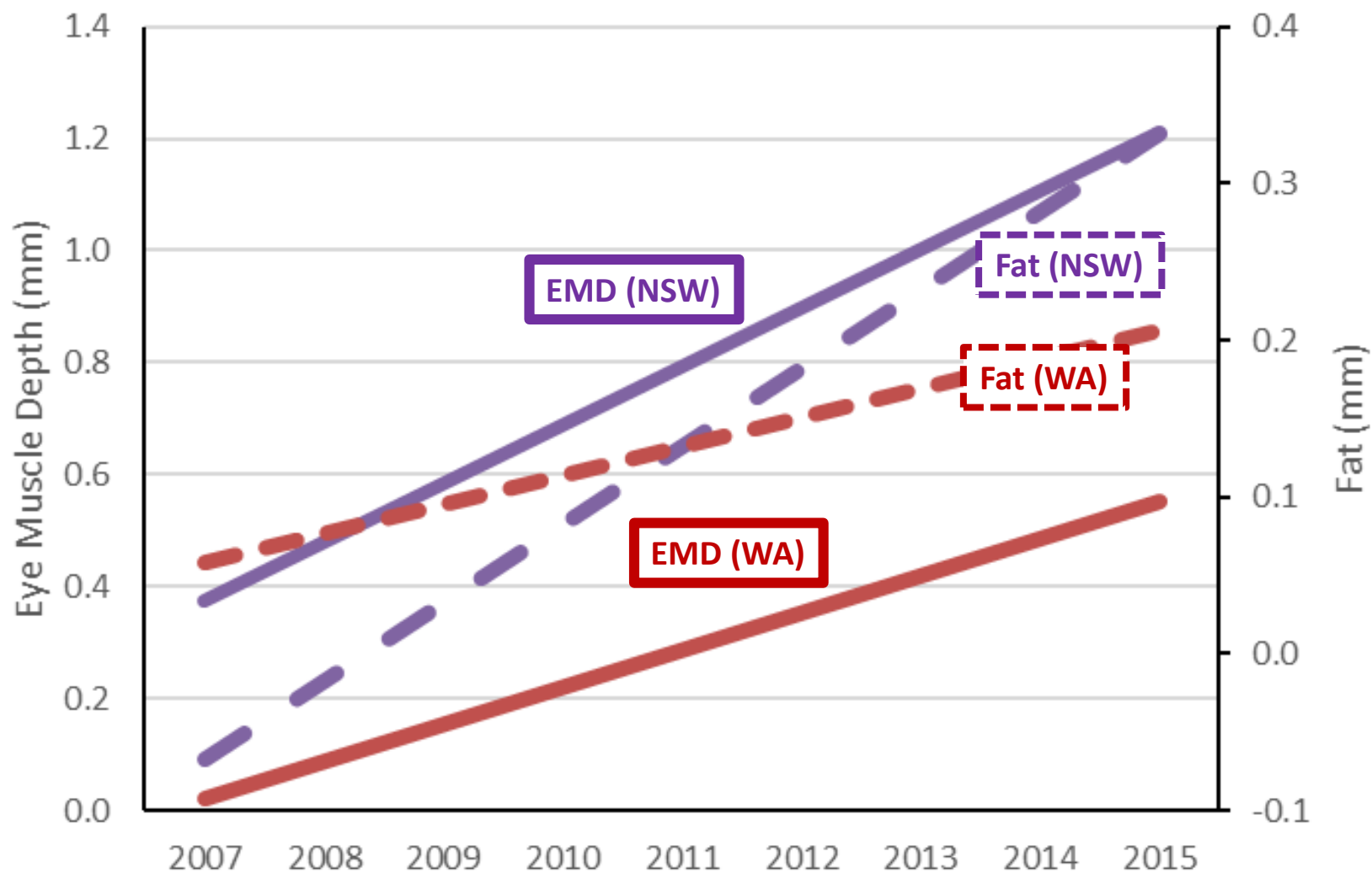
## Dohne Meat Genetic Gain (2005-2015)



# Yearling Weight and CFW Trendlines (NSW and WA Stud Figures) (2011 - 2015)



# Fat and EMD Trendlines (NSW and WA Stud Figures) (2007 - 2015)



# So what is the Dohne's Role ?

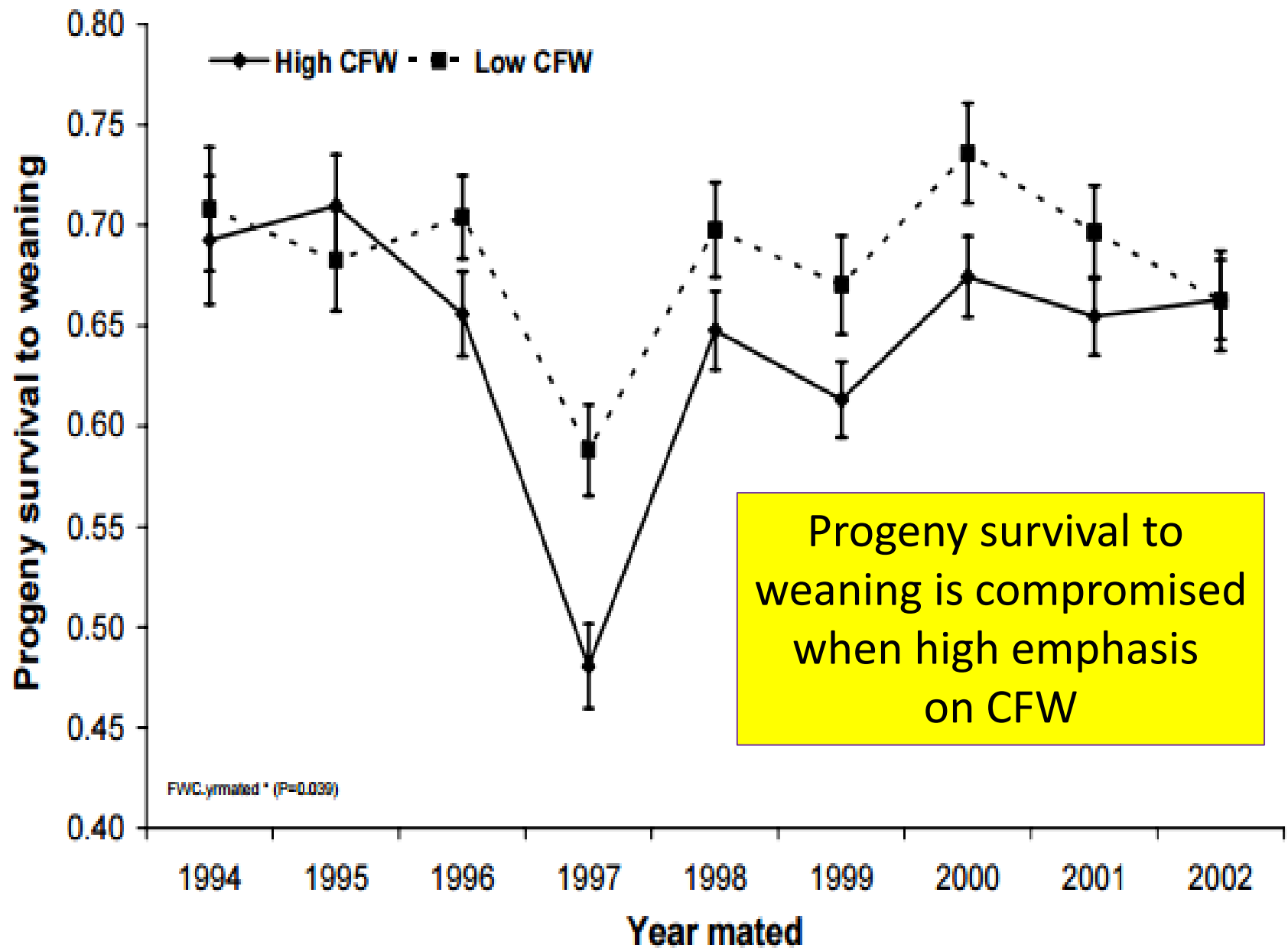
Wool production impact:

Hatcher and Atkins (2007) data analysis showed that CFW had no impact on the ability of a ewe to

- conceive,
- the proportion of ewes lambing,
- litter size or
- the number of lambs born but

did have a **significant impact on the number of lambs weaned**





Progeny survival to weaning is compromised when high emphasis on CFW

# So what is the Dohne's Role

- Ewe efficiency / resilience / hardiness / fitness
  - Currently a major industry focus
  - Production per kg/ha/DSE/100mm rainfall etc
  - Production efficiencies
    - 60% of feed need required for ewe maintenance
    - increasing lamb number per ewe reduces energy required by ~ 40% per kg of carcass produced
    - Improved twin survival is a major profit driver

# So what is the Dohnes Role

- Hybrid vigour when crossed over Merino base
  - 10-15% improvements in reproduction
- Increased speed of genetic gain
  - reduced generation interval,
  - earlier mating of ewe progeny etc

# So what is the Dohne's Role

- Reduced costs of production
  - Improved weaning percentages and survival
  - Easier care
  - Reduced fly issues
- Full pedigree and performance recording
  - A major production advantage

## In Summary

- As a dual-purpose breed an ability to capitalise on changes in wool/sheep meat and breeding ewe values
- An on-going role with increasing the national breeding ewe base and production efficiencies

# Thankyou



Contact Details:

Geoff Duddy

0427007490

[geoff@sheepsolutions.com.au](mailto:geoff@sheepsolutions.com.au)

[www.sheepsolutions.com.au](http://www.sheepsolutions.com.au)