



Department of
Primary Industries

Hands on Education the Practical Advantage

Robert Dunn
Education Officer
Tocal Agricultural College



Department of
Primary Industries

Hands on Education the Practical Advantage

CB Alexander Agricultural College

Tocal Paterson

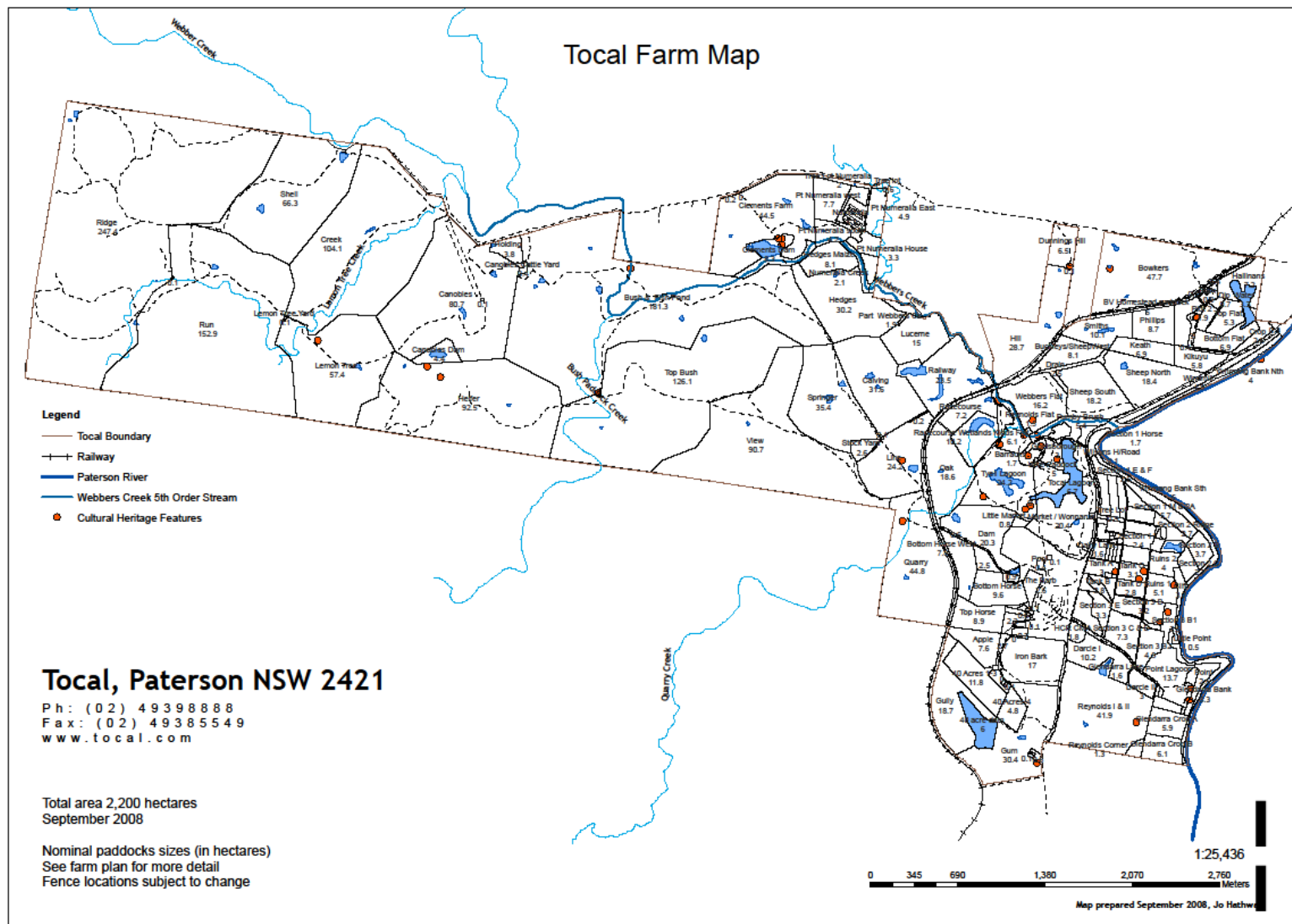
Lower Hunter

2200 Ha

Established in 1965

120 Fulltime Students

30 Dairy and Rural Trainees



Beef

1100 head

600 Brangus Cows

Angus, Brangus and
Charolaise Bulls

Sale of yearlings on local
stores market

Calving mainly in spring

93% calving

950 mm (38") rainfall



Hands on Education the Practical Advantage

Bona Vista (sheep)

Purchased 1974

100 hectares

200 Dohne breeders and
130 future breeders

Wool Production
Over 1.5 tonne per year



Hands on Education the Practical Advantage

Dairy

Area 300 hectares

360 in herd (Fresian and Illawarra)

Weekly average production is 37,500 litres/week

Per Cow lactation 7,700 litres

Ryegrass, white clover, red clover,
Kikuyu and Lucerne



Stock horses

20 Australian Stock Horses
(ASH) for working cattle

20 breakers for student training

21 ASH mares for breeding
replacements

2 ASH Stallions

20 Foals 20 Yearlings



Numeralla (Free range eggs)

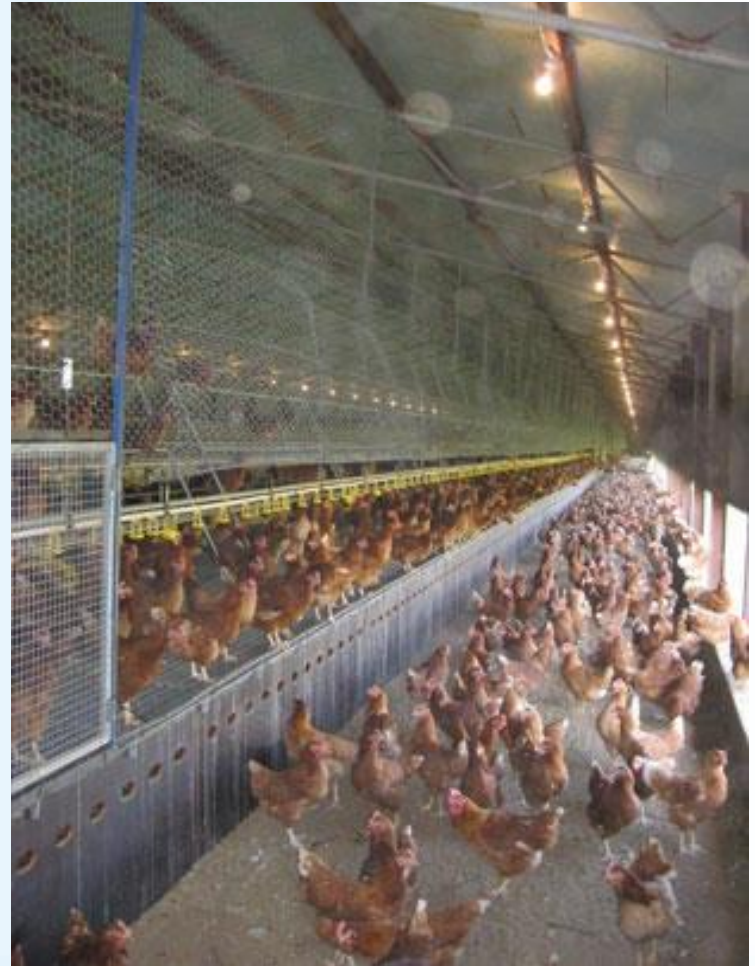
Purchased 1981

by CB Alexander Foundation

Shed Area 8,762 sq m,

90,000 hens laying 70,000 eggs/day

16,000 eggs packed/hour off conveyors



Challenges to Tocal's Sheep Breeding Enterprise

950 mm rainfall
average

High humidity

Flooding forcing
sheep onto a
small area.

50ha area
available to run
the sheep.



Challenges to Tocal's Sheep Breeding Enterprise

Distance from
markets

Internal parasites

Wild dogs and
Town dogs

Dry November and
Decembers

Pasture quality
variability



Hands on Education the Practical Advantage

Since the year 2000 close to 200 dogs have been eliminated.

Dogs are kept under control by
Shooting, Baiting, Trapping and
use of a Sheep Protection dog since 1996.



Positives of Tocal's Sheep Breeding Enterprise

Educational opportunities
for all Tocal students

Cert III

Handling, medicating,
marking, culling, ewe and
ram selection, weighing
and recording, selling.

Cert IV

Managing joining, lambing,
mothering and tagging,
shearing and crutching,
wool classing.



The expectation of both a learning place and a workplace **& National Curriculum**

Hands on learning is an integral part of the a Tocal students experience and is an important part of Tocal students studies within the National Australian Qualifications Framework competencies for Certificate levels III and IV



Hands on Education the Practical Advantage

2008 flock established with 50 scanned in lamb maiden ewes from Roseville Park Dohne stud.

2009 purchased 50 cast for age ewes from Roseville Park.

On going Ram purchases from Roseville Park Dohne stud.

All ewe progeny are retained for training purposes.

2015 was the first year where a full confirmation and wool cull was undertaken.

The self replacing flock in 2016

130 mixed aged ewes

104 maiden ewes

114 ewe hogget's

Future

100 mixed age ewes

100 maiden ewes

100 ewe hogget's



Hands on Education the Practical Advantage

Dohne and XB \$ Comparisons 2009 to 2012

XB and Dohne wether lambs same price on the same market

Cast for age returns for Dohne and XBs ewes was equal.

Wool and meat returns for Dohne and XBs was equal.

The Dohne PLUS are the replacement keeper ewe lambs.

Saving Total \$20,000 to \$25,000 every 6 years.





Department of
Primary Industries

Hands on Education the Practical Advantage

Total 2015
cast for age
and surplus to
requirements
sale sheep

Store weaner
wethers \$75

Ewes sold at
Dubbo Av \$84



Hands on Education the Practical Advantage

Total 2015
drop wether
weaner lambs
sold as stores
in December
2015 growing
out well in
January for the
new owner.



Hands on Education the Practical Advantage

2008 Lambing	XB	120%
	Dohne	95%
2009 Lambing	XB	135%
	Dohne	115%
2010 Lambing	XB	123%
	Dohne	123%
2011 Lambing	XB	107%
	Dohne	117%
2012 Lambing	XB	120%
	Dohne	120%
2013 Lambing	Dohne Ewe	127%
	Dohne Maiden	112%
2014 Lambing	Dohne Ewe	110%
	Dohne Maiden	94%
2015 Lambing	Dohne Ewe	102%
	Dohne Maiden	77%



Hands on Education the Practical Advantage

Wool statistics

2011 Fleece 19.9 mic	Cut 5.1 kg av	Clean 1472 c/kg
2012 Fleece 19.9 mic	Cut 4.2 kg av	Clean 1061 c/kg
2013 Fleece 19.3 mic	Cut 3.8 kg av	Clean 1260 c/kg
2014 Fleece 19.4 mic	Cut 4.2 kg av	Clean 1231 c/kg
2015 Fleece 19.5 mic	Cut 4.6 kg av	Clean 1342 c/kg



Industry visits are an important part of the students learning process





Department of
Primary Industries

Hands on Education the Practical Advantage





Hands on Education the Practical Advantage

Total has a policy of including students in all aspects of the Total Farms. This hands on approach and students being encouraged to take responsibility for their own learning forms:

Attitude (internal beliefs)

Culture (collection of reinforced behaviours) and

Behaviour (what people say and do)

The hands on experiences and responsibilities working with the Dohne flock gives the students a sense of pride and accomplishment.

