

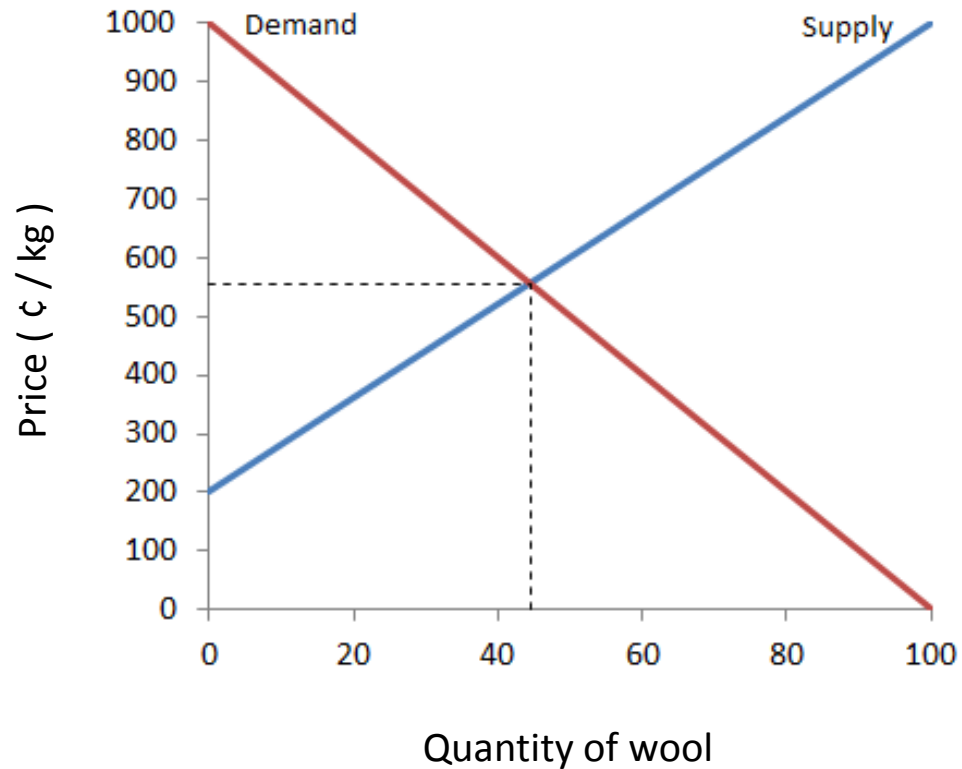


THE DOHNE IN AUSTRALIA

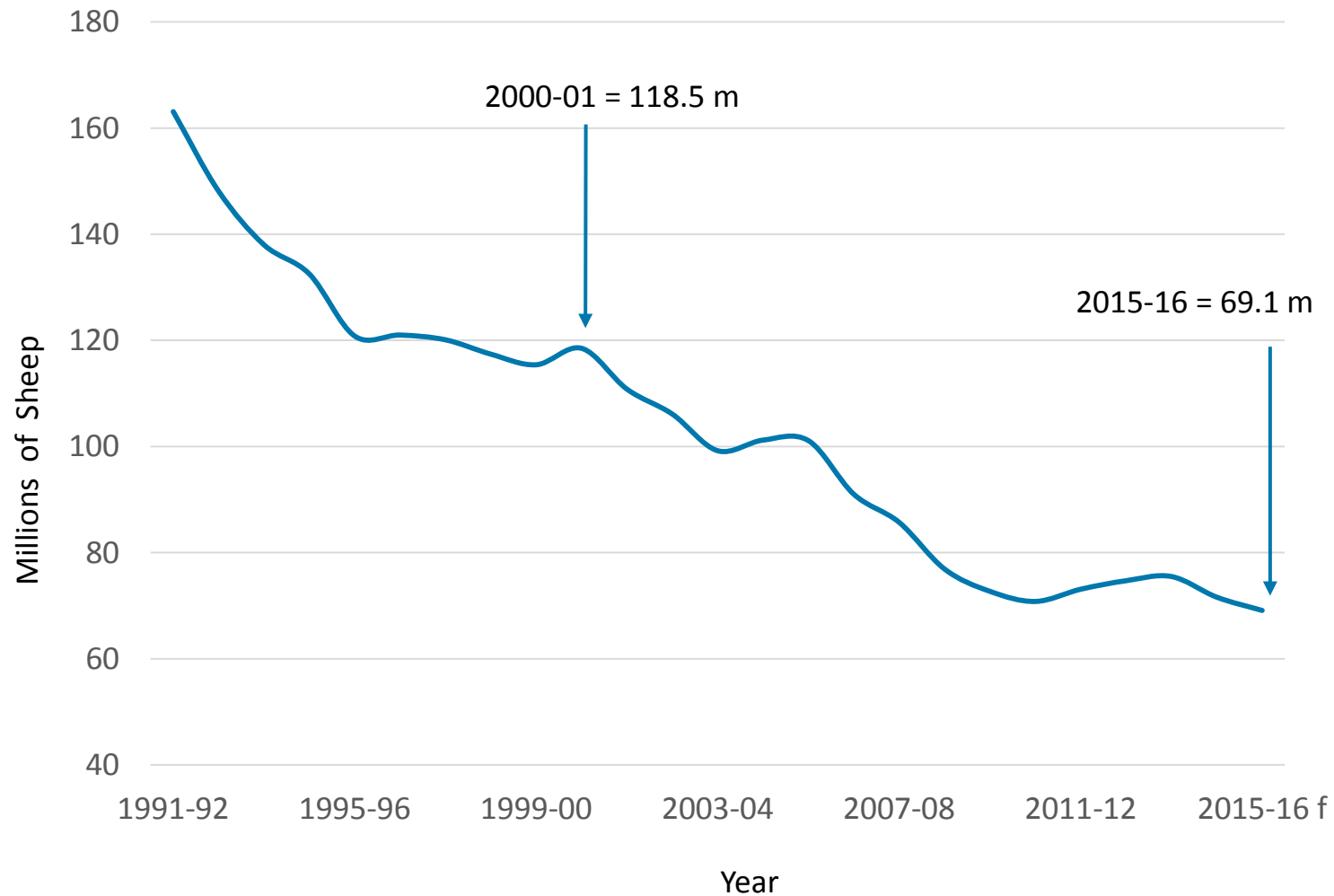
John Nadin

President, Australian Dohne Breeders' Association

Background

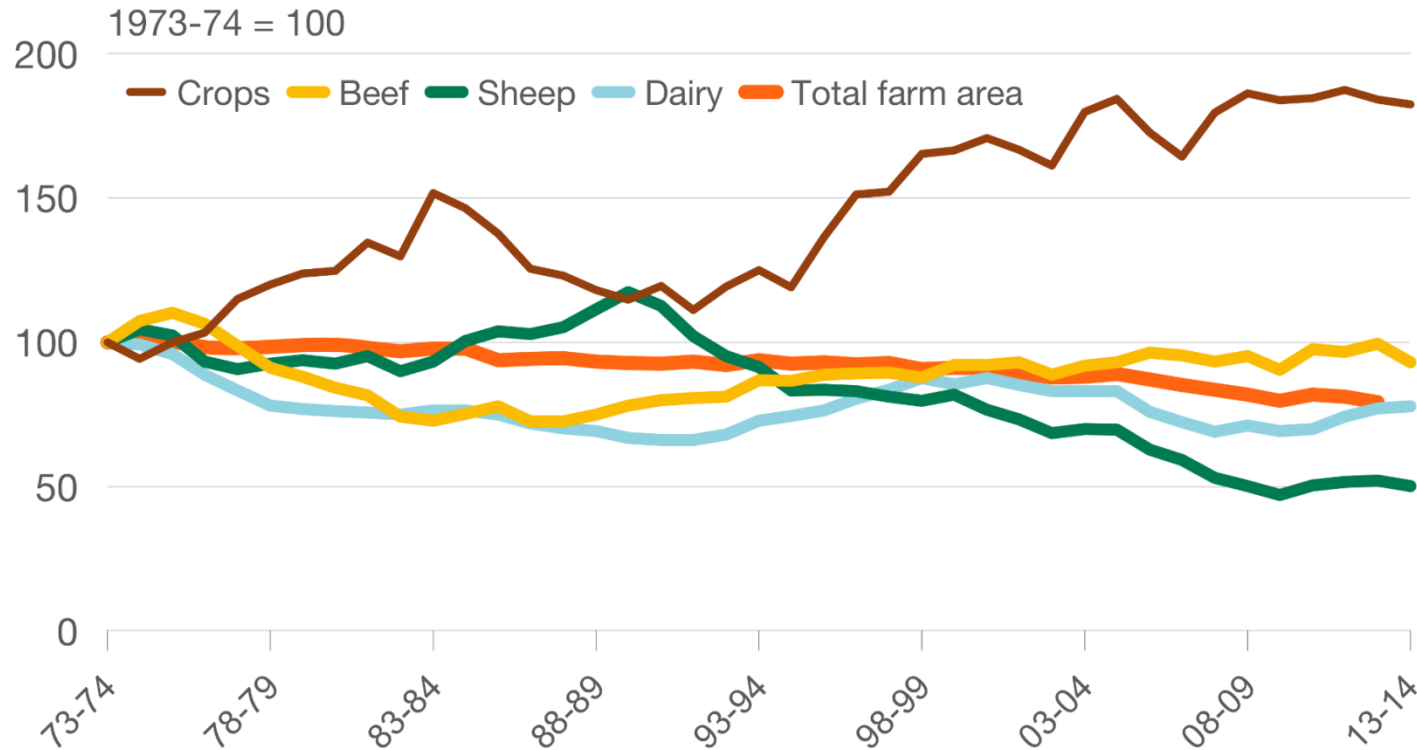


- Record 4.8 million bales of wool stockpiled
- Record 173 million national sheep flock



- \$3 million per day in interest costs
- 68 million sheep ... lowest in 100 years

Changes in farm land use



Source: ABARES

- Wool growing becomes unprofitable
- Move into other commodities
- Introduction of non-wool producing sheep breeders



The Dohne Provided:

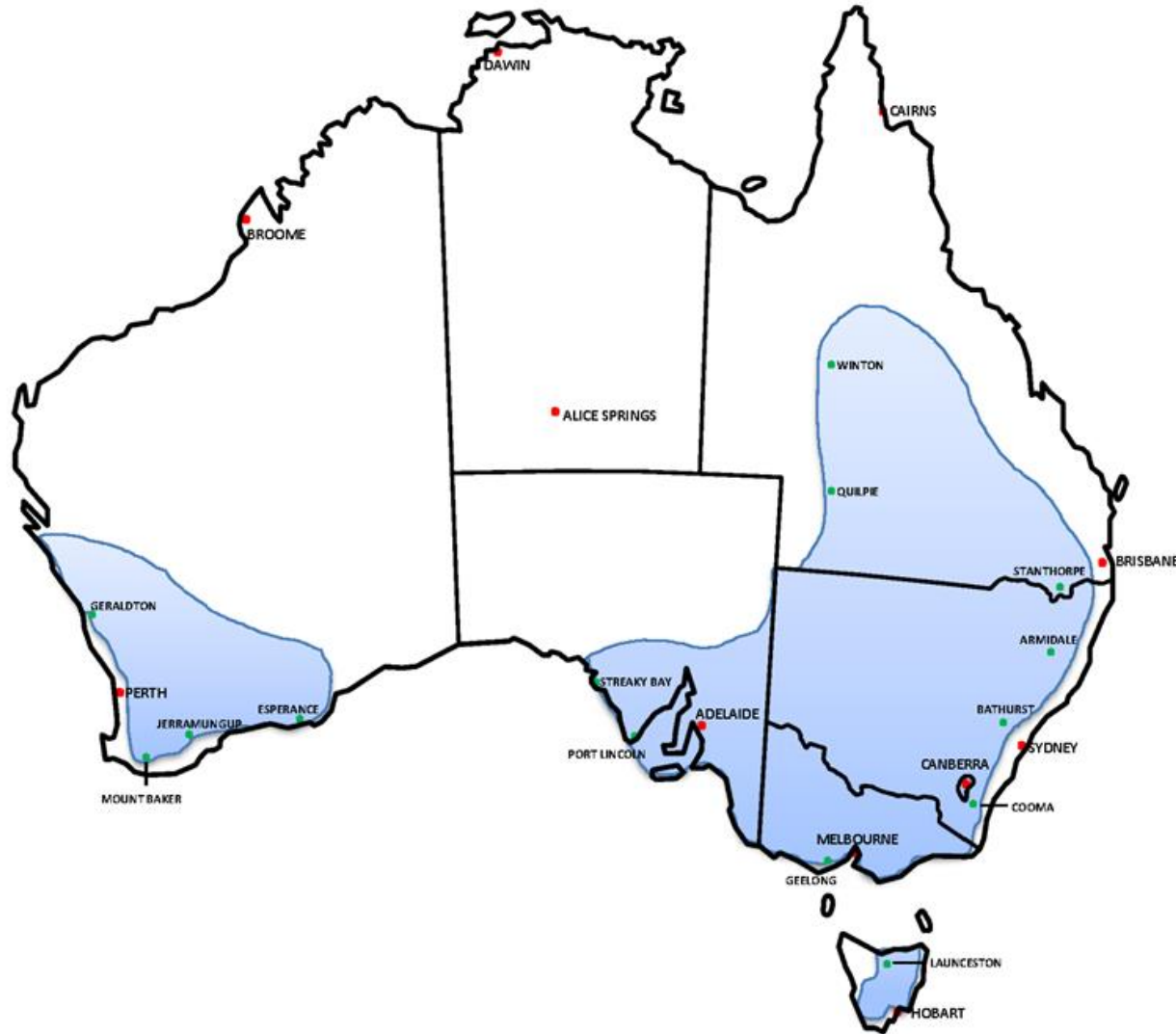
- Dual Purpose characteristics
- Suitability to Australian conditions and traditional Breeding Systems
- Competitiveness in a shrinking market



Dohne productivity versus other breeds

Profit Driver	Dohne	Merino	Crossbred	Composite
Fertility	✓	✓	✓	✓
Fecundity	✓	✗	✓	✓
Growth Rate	✓	✗	✓	✓
Quality Wool	✓	✓	✗	✗
Prime Lamb Carcass	✓	✗	✓	✓

Adaptable and Durable



- 800m annual summer rainfall
- 990m annual winter rainfall
- 240m annual hot dry interior
- The ability to convert inferior vegetation into sustainable products

The Facts




- High Fertility
- Prime Lamb
- Merino Wool

Adaptation



- Staple length
- Wool character
- Wool Nourishment
- Feet Structure

- 
- Rate of change slow due to line breeding
 - Growth rates and carcass traits could not be sacrificed for wool quality

Compliance

- High labour costs
- Time consuming
- New technology available – i.e Smart Tags - affordable & user friendly



SmartShepherd Tag

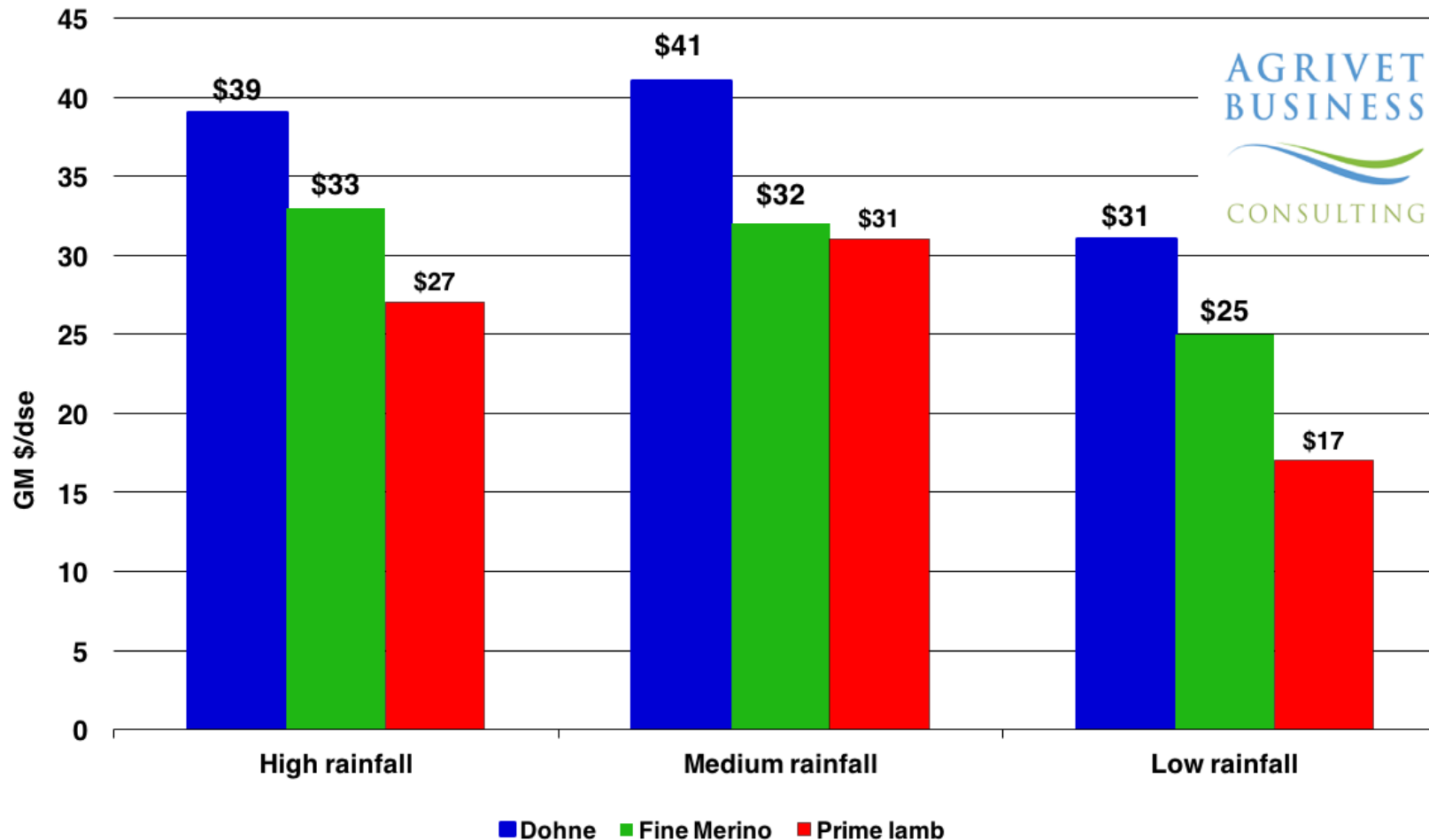
Reusable Ear Tag

Separate Attachment System

3 year device lifespan

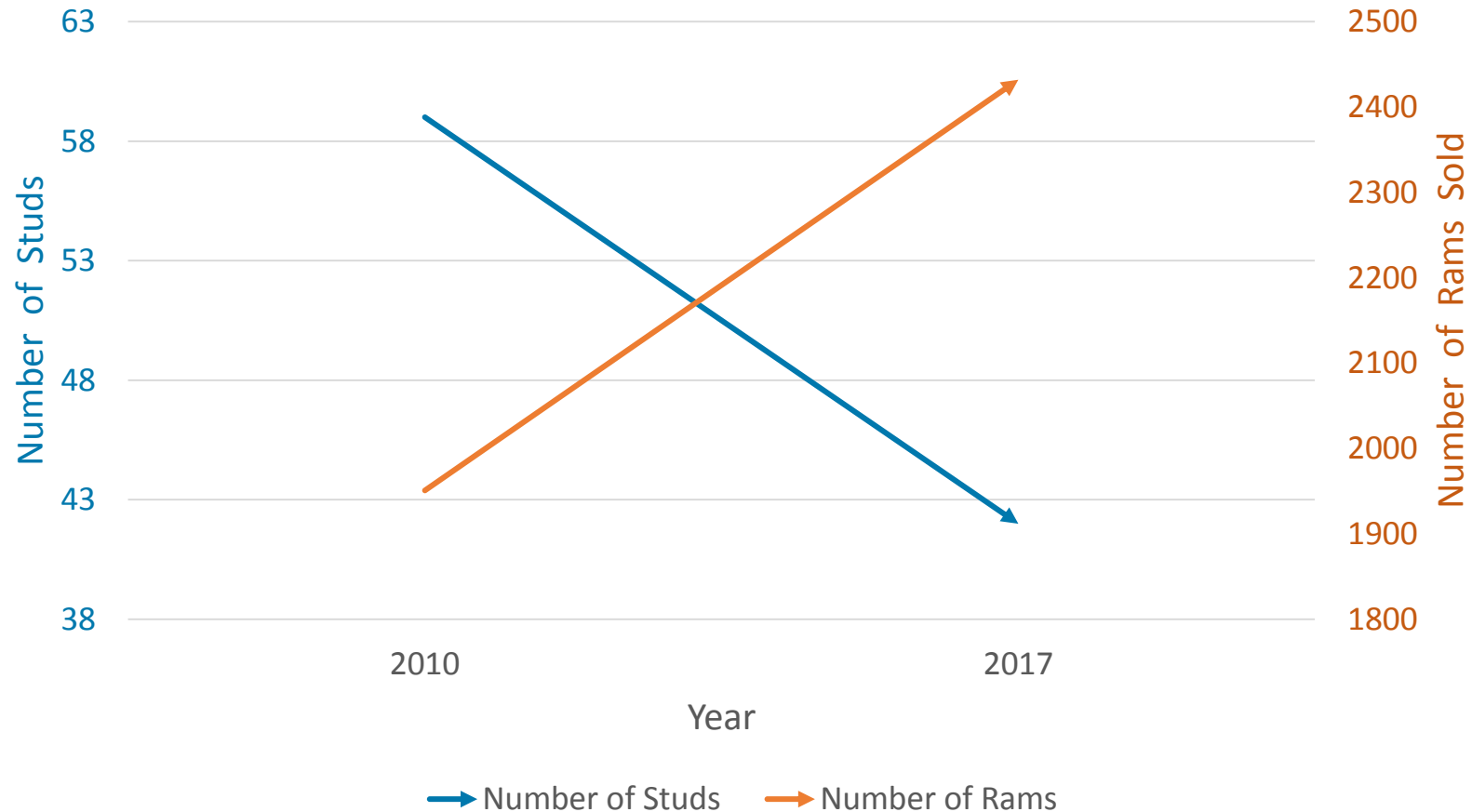


Influence



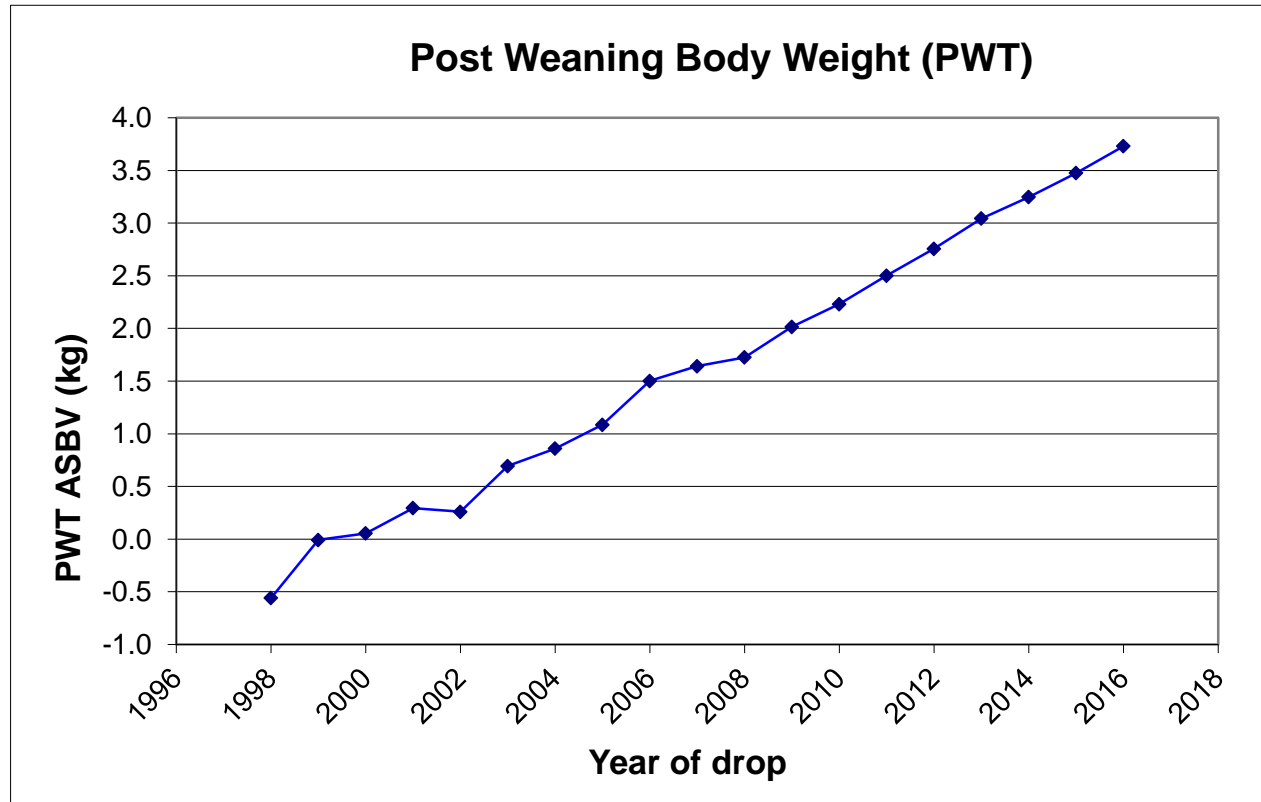
- Estimated at over 20% of the national flock (AWI & MLA survey)
- Genetic infusion throughout Poll Merino Studs
- National average per head woolcut (all breeds) increase from 4.373kgs to 4.482kgs

Three generations on



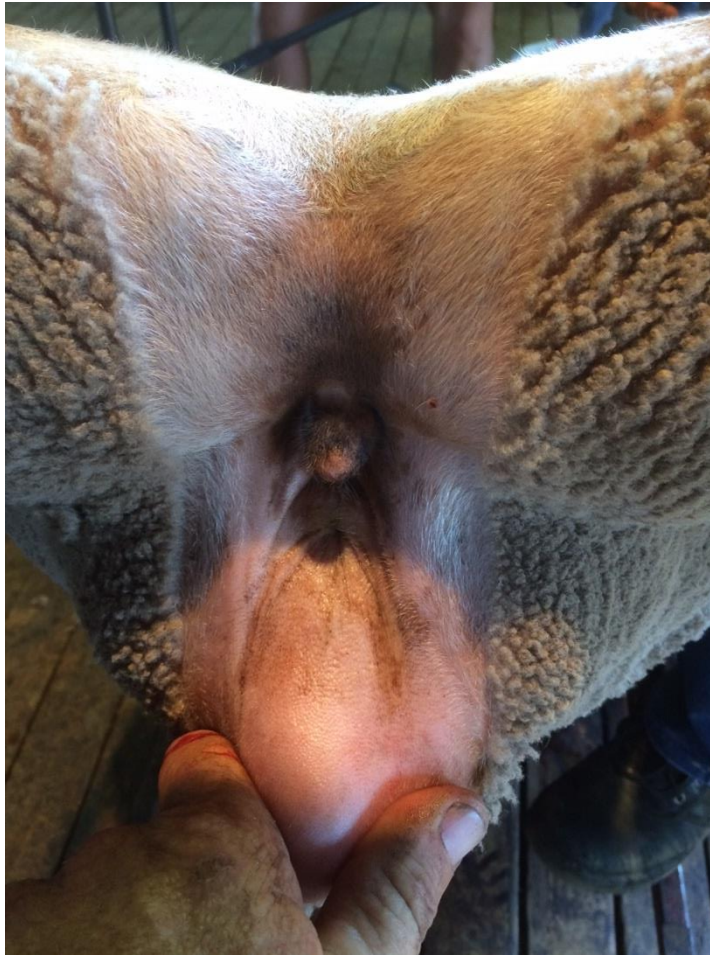
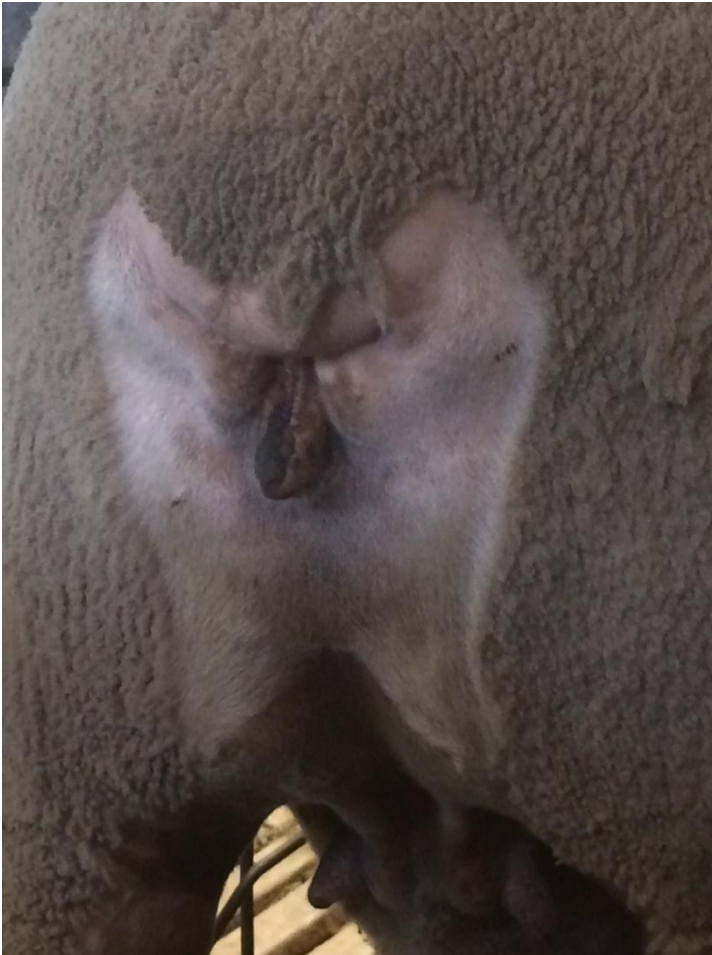
- Natural attrition in number of studs
- Increase in
 - No of rams sold at auction
 - Average price

The Future



- Increasingly competitive market
- Relevant to current & future markets
- Commercial relevance
- Breed survival
- Important of \$ value in kgs of meat and wool produced per breeding ewe
- Adult ewe body weight

Animal Welfare



- Pressure will continue
- Natural Bare Breach eliminating the need for mulesing

Conclusion

- ✓ Credible breed – recognised and respected
- ✓ Maternal traits, growth rates, apparel wool, and 'doing ability' is what shapes our breed
- ✓ Revolutionary breed
- ✓ It is all about balance
- ✓ Unite domestically and internationally



Acknowledgements

- Meat and Livestock Australia (MLA)
- Australian Wool Innovation (AWI)
- Agrivet Business Consulting
- Australian Bureau of Agricultural and Resource Economics (ABARE)

