

DOHNE
AUSTRALIA

2017-2018

ASBV's 10 reasons why you should choose us

- global appeal
- maternal breed of choice
- high lambing percentages
- early maturing lambs
- non-mulesed
- versatility
- self-replacing
- prime lamb
- carcass merino
- wool exceptional

The Dohne's influence over the national sheep flock during the past 18 years has been profound. The growth rates, carcass shape, fecundity, doing ability and quality apparel wool has the Dohne at the forefront of the Australian sheep industry.



The Dohne is the ultimate self replacing, maternal breed.

President's Message

JOHN NADIN
ABDA President

WELCOME to the 2017 magazine, a magazine that is based on the growers, agents and consultants testimonials on the realistic commercial performance of the Dohne.

The 'emerging hero' of the Australian sheep industry has established itself as the versatile maternal breed, whether it be a self-replacing flock, a terminal prime lamb dam or lamb finisher. It is all about balance; type, make and shape.

Breeders are to be congratulated on the continual improvement in wool quality, growth rates, fertility and structure.

The Dohne's doing ability, ease of management, ability to finish quickly, perform and grow into a productive animal after a hard start is second to none.

Over recent years the growth and demand for Dohnes has significantly increased across both domestic and international markets.

Dohnes are rapidly being recognised as a meritable prime lamb and breeders continue to work with meat processors to understand and meet market requirements.

With a consistent and high comfort factor Dohne wool continues to show it's versatility to the textile manufacturers and features prominently in high fashion

garments including those worn by Qantas staff and AFL players.

Although the Dohne is a Merino strain it is imperative that differentiation of type is maintained.

It is essential to continue the long term vision laid down eight decades ago and not succumb to short term market forces.

The Uruguayan Dohne breeders association will host a Dohne tour following the World Merino Conference in April 2018.

This is a great opportunity to see quality Dohnes in South America, and I urge producers to attend.

Domestically and internationally we are a global breed, a breed that ticks all the boxes.



The Australian Dohne Breeders Association's mission is to professionally develop a superior dual purpose sheep with a marketing edge, which is competitive in meeting the present and changing needs of the livestock markets, the consumer and the industry.

THE ASSOCIATION seeks to achieve this mission by:

1. Maintaining the integrity of the breed whilst developing its positive traits, to achieve premiums in the market place, both nationally and internationally.

2. Developing breeder's skills by providing high quality, accredited educational courses and practical workshops, which meet the diverse needs of the membership and the industry.

WOOL

"Crimp and definition characteristics of wool produced by Dohne Merinos is on par with Merino wool and there is no price differentiation. For even the most discerning wool enthusiast, separating a quality Dohne fleece to that of a Merino is a near on impossible task; test results speak for themselves."



• Dohne Wool is classed as AAAM fleece.

"Absolutely phenomenal quality"

CHARMAINE CACCIOLA
Kojonup, WA

"ABSOLUTELY phenomenal quality" is how Charmaine Cacciola, Master Wool Classer, Australian Wool Exchange (AWEX) appraiser and Training and Education (TAE) Trainer described Dohne wool.

Classing around 50,000 fleeces a year across WA, Charmaine finds Dohnes are consistent with staple length and the strength and characteristics within the fleece is exceptional.

"I find Dohne wool has less breakages in the secondary follicle

compared to Merino's when processing which causes little off breaks."

"The uniformity of the comfort factor combined with a lower prickle factor gives an overall better feel against your skin from Dohne wool and is a huge purchase influencer by the end consumer."

Within Australian shearing sheds Wool Classers class Dohne wool as AAAM fleece.

"The uniformity and length is exceptional and the characteristics of the wool are so uniform that all the crimps are nearly exactly the same."

"The wool is soft, stylish and white, with a very long staple so it's good for the producer because they get more weight in the fleeces."

Charmaine believes that Dohne wool has a strong future and is "right up there" and holds it own against traditional Merino wool in the crimp and curvature.

"It simply is a wonderful product averaging probably 5.5kg skirted and produces strong returns for the grower and in Charmaine's opinion Dohne wool is the new Merino fleece."

Western Australia - Awex and wool buyers acceptance

STEVE NOA
Perth, WA

WOOL buyer Steve Noa said that Dohne wool is up there with its Merino counterpart being snapped up in auction rooms across the country to fill orders for Chinese and Indian processors.

"If Dohne wool is well bred and looks like Merino wool, it will go straight into a Merino order," said Mr Noa, a senior wool buyer for Queensland Cotton in Western Australia. Dohne wool sporting crimp definition and characteristics on par with Merino wool is bought for the same rate at auction. "We have a policy whether it be Merino or Dohne wool: if it doesn't look right, we won't buy it."

He said the bulk of the Dohne wool he bought was 21 micron, however, some Dohne wool he had secured



was as fine as 19.5 micron, with all the wool being used for apparel.

The buying process has been simplified with Dohne wool now classified as AAAM – no longer AAAM Dohne.

Australian Wool Exchange (AWEX) chief executive Mark Grave said the

Dohne wool consistently showed it was a low risk fibre when it came to medullation of dark fibre and that it was very similar, if not the same, as Merino wool.

The change of the branding of Dohne wool to AAAM is part of the new AWEX code of practice.

NSW – Holt's wool spun to leisure

TOM & SOPHIE HOLT
Riverina, NSW

NICHE markets for non-mulesed and ethically produced wool have been achieved by a Riverina family after a switch to the Dohne breed.

Tom and Sophie Holt run a sheep, cattle and irrigated cropping enterprise at Urana and Jerilderie and have ticked the boxes with knitwear

manufacturers with their Dohne wool. Their high volume clip, from a flock of 32,000 sheep, has been snapped up by Australian and New Zealand companies producing pure wool travel and leisure garments.

Woollen apparel made from Dohne fleece has been supplied to the Australian and New Zealand Defence Forces and the Victorian Police.

Wool from the Holt family's Coonong Station clip has also been used by Qantas for company uniforms.

Mr Holt said demand for ethically produced wool was strong from Japan, New Zealand and China.

He said manufacturer feedback had indicated Dohne wool spun well due to a high comfort factor.

Qld - Dohne Wool Stacks Up In The Pastoral Zone

CLARK FAMILY
Cunnamulla, QLD

KEEPING a focus on the wool side of the equation, Philip and Joanne Clark's Dohne flock is producing good results. In fact, they're even giving some Merino producers a run for their money.

The Clarks' Dohne wool clip averages between 19.5- and 20-micron, with

ewes cutting five to six kilograms. "We didn't lose as much wool cut as we thought we would by moving to the Dohnes," Mr Clark said.

When the Dohnes were first introduced, yields were lower than would have been liked, but Mr Clark said this had improved over recent years.

"We've never had fantastic yields in this country, but now we're getting about 67 to 69 per cent, which is where we were with our Merinos," he said.

Mr Clark also ruffled a few feathers at the local Cunnamulla Show last year, where one of his fleeces was champion in the red tip category, beating a number of pure Merino entries.

JAG DOHNE MERINOS

ON PROPERTY RAM SALE | WED 23RD AUGUST 2017

6 RIVER RD. HAHNDORF SA
ENQUIRIES AND INSPECTIONS WELCOME

GREG PETERSEN

MOB: 0425845944 EMAIL: JUDEGREG1@GMAIL.COM WWW.JAGDOHNEMERINOS.COM.AU

"Gone are the misconceptions of Dohne wool being inferior to Merino wool with the backing of AWEX. Dohne Merino wool is no longer classified as anything other than AAAM – the majority is inseparable from quality Merino wool, based on standard testing procedures."



• Dohne Wool described as "The New Merino Fleece" by WA Master Classer.

NSW - Performing In High Rainfall Zone

WAYNE CULVERSON
Orange, NSW

WAYNE CULVERSON was a third generation NSW Merino wool producer and among those who scoffed at the idea of meat sheep producing wool on par with the mighty Merino. But thanks to a push by his wife Lynette, the Orange district graziers are enjoying the increased survivability, fertility and yield of Dohnes at "Heatherdale".

A numbers man, **Mr Culverson needs proof on paper before he'll jump into a major production decision and after several years of strategic testing, got all the proof he needed to breed further towards a purebred self-replacing Dohne flock.**

The Culversons were among the first commercial operators in the Orange district to try Dohnes when in 2003 they spent time assessing sheep and comparing Dohne and Merino fleeces.

"We were asked to pick which was Dohne and which was Merino and we couldn't pick the difference," Mr Culverson said.

"It was my wife who gave me the push. I'm a third generation fine wool Merino producer so it took a bit to push me over the line just because I was concerned about the wool on the Dohnes, but I'm so glad my wife convinced me."

"When we went to buy the rams I still tended to always put the wool first rather than the meat side of it." He started as the main selector in the first two years, but Mrs Culverson pointed out that the flock needed more body, so she chooses for body size first, before her husband selects for wool.

They have compared wool tests since 2004, providing figures that cemented their breed changeover.

"What we found in the first year was a 46 cents a kilogram difference in price in favour of Dohnes, a 255c/

kg difference again in favour of the Dohnes in 2005, and in 2006 it was back to 130c/kg in favour of the Dohnes, and the top price for the Dohne wool was 970c/kg compared to the Merino at 840c/kg," Mr Culverson said.

He said the Dohne wool was 16.2-micron, just 0.6-micron higher than the Merinos' 15.6- micron fleece, and the Dohne wool yielded slightly better each year. "The big difference was in the staple length," he said.

"In the first year it was 73mm for the Dohnes and 63mm for the Merino. Our two-tooth Dohne hoggets were 68mm and the Merino hoggets didn't even make length, so their wool had to be sold in a lamb's line."

"A critical point was in all testing years, both the Dohnes and Merinos were run as one mob under equal conditions."



MOLLERIN ROCK
DOHNES

BEST OF BOTH WORLDS



COME AND SEE US AT THE
DOWERIN FIELD DAYS | AUGUST 30TH & 31ST

ON PROPERTY RAM SALE

FRIDAY, SEPTEMBER 8TH, 2017

COMMENCING AT 1:00PM



IAN & STEPH LONGMUIR

P: 08 9684 6061 M: 0427 770 728 E: islongmuir@bigpond.com

455 Longmuir Road, KOORDA

www.mollerinrockdohnes.com.au

THE MATERNAL QUALITIES OF THE DOHNE

"Everyone would agree that the maternal qualities of the Dohne ewe are perfect for Australian conditions. They are survivors – resilient and fertile. They are natural mothers who produce and rear high performance lambs. Our challenge is to manage them more effectively to get the optimal results using their exceptional mothering abilities."

Wayne Hawkins, JBS Swift producer of the year 2015.

Hawkins 'sheep of choice'

WAYNE HAWKINS
Frances, SA

"DOHNES have proven their superior mothering ability and growth rates to meet lamb market specifications and also still produce a reasonable fleece at shearing. The Dohne fits into our sheep and cropping operation efficiently."

I would like to share with you my journey of how I initially became involved with Dohnes and why I believe they are the 'sheep of choice'. My focus will be on how their strong maternal instinct and attributes have proven to be a positive and financial gain for my farming enterprise. In the early 2000's, agribusiness consultant Ken Solly, was taking a group of people on a MacKillop farm management tour and as part of the trip we looked at some Dohne operations in Western Australia.

On this trip, I had a lightbulb moment. I was breeding sheep for wool. Wool prices were low at this stage. I needed to make more money. I decided the world needed to be fed, and meat was a great source of protein in the human diet. My focus changed, it went from wool to meat.

I wanted to produce quality prime lambs. Not just any lamb, a lamb with a good carcass and one which had significant weight gains. This started my journey to find the ideal sheep that would have the attributes I wanted – decent micron wool, good quality meat and an excellent breeder. We visited the Dohne operations, and I liked what I saw. Here was a proven sheep breed that met all my needs. It was my ideal sheep.

The major feature that I particularly liked was that the Dohne was a great mother. Once I got the Dohne ewes home, the maternal qualities of the Dohne soon became obvious.

Benefits of Dohne ewes;

- They are fertile, natural breeders with a high libido.
- Great mothers – caring sheep that look after their lambs.
- They have lambs that want to 'get up and live'.
- They are excellent milk producers.
- Their lamb percentages are consistent and high.



• Farm manager Ed Carmichael and Circle H Farms principal Wayne Hawkins.

- Lambing percentages are normally 115% – 125%.
- They have the ability to hold condition after lambing, even in tough conditions.
- They breed lambs that have high weight gains within 5-8 months of age, while maintaining a good fat cover.
- They are non-seasonal breeders – they are cycling all the time.

Our own Dohne breeding program.

- Our goal was to have a highly functioning self-replacing Dohne flock.

History of sheep – where do Dohne's fit in?

In the late 1990's the gross margin of a sheep was 20% meat and 80% wool. Today, the gross margin for a sheep is 70% meat and 30% wool. This identifies the shift from wool to meat. This justifies the choice of Dohne as the 'sheep of choice' in today's world with its dual-purpose excellence in wool and meat. The Dohne sheep has proven to be the ultimate dual-purpose sheep for Circle H Farms.

The main reasons for this success is the following;

- During tough drought times on our farm they have proven to be resilient – they are low maintenance.
- Good movers in the yards – often don't need dogs. You could almost call them 'intelligent'.
- They produced good quality wool, which met my expectations of micron, length and quality.

- They are great breeders. Seeing the lambs slip out like 'a piece of soap' and be strong and healthy at birth is heartening.

The one area which excited me the most was being able to increase my flock significantly quicker than I had been doing, due to the improved fertility and successful lambing of the Dohne ewe. Once the rams were put out it would seem that the ewe fell pregnant almost instantly. This is apparent at lambing time when the ewes basically all lamb around the earliest lambing date. It is heartening to see the ewes give birth so easily, whether it be single, twins or triplets. The lambs are strong and healthy and the mothers produce plenty of milk. Dohne ewes can easily manage lambing percentages of 115-125%.

- The lambs are fast growing and they have significant weight gain, allowing them to be marketed earlier. Even though they have a quick weight gain, they maintain their muscle definition and structure.

- Excellent lambing percentages, coupled with the early turn off of lambs allows me to maximise productivity.

Where are we now? When we won the JB Swift Lamb Producer of the Year, this reinforced my decision back in 2004 to start breeding Dohnes.

"The Dohnes have proven to be successful, both commercially and financially. The main reasons for this is that there are fewer losses of lambs and their ability to be consistent with their weight gain."

Survivability a key factor in harsh Victorian winters

WAYNE CALDOW
Edenhope, VIC

WAYNE CALDOW, Edenhope in far west Victoria, has seen a **15 to 20 percent lift in lambing percentages, a lot higher lift in actual scanning rates, less dry ewes and a breath of fresh air in running the Dohne ewe weaners** through their first 12 months of life compared to his ex Merino enterprise.

A lot of people, when they first saw the Dohnes, looked at him through Merino eyes and saw them cutting less wool. After two or three crosses we could see a kilo of less wool.

However, a thousand ewes cutting a kilo less of wool at \$8 a head you've lost \$8,000 but if they have 15 to 20 percent more lambs at a store price of \$80 to \$100 you could be anywhere from \$15,000 to \$20,000 better off per thousand ewes.

Sovereign Hill Pastoral manager Peter Rooney said the Dohnes have proven to be the perfect fit on Narmbool at Elaine, VIC, between

Ballarat and Geelong. "They are fertile, have good mothering ability and meat."

"The Dohne has a really good milking ability and with our rising two first-cross ewes, we pregnancy tested 132 per cent in lamb – and they'd already had a lamb. The rams' vigour was also hard to match, they leave our Southdowns for dead, their fertility is phenomenal. We've had maidens do 100pc twice, and we normally get around that (100pc)," he said.

He said he planned to continue with the Dohnes for their fertility, mothering ability and growth.

NEALE AND KATHERINE HOLT
Wedderburn, VIC

WITH fertility the main catch-cry of Victorian producers Neale and Katherine Holt, a change to the Dohne breed was inevitable.

The Holts made the switch to Dohne rams in 2009, despite having more than 100 years of Merino breeding behind them.

The aim for the Holts is to breed

a low maintenance, non-mulesed, highly fertile flock. "Fertility was the major factor when we decided to change breeds because it is the key profit driver," Mr Holt said.

"We decided to mate all our ewes in the self-replacing flock to Dohnes and I was amazed the difference it made in the lambing just by using the Dohne rams over the Merino ewes," Mr Holt said.

"Our lambing percentage lifted five to 10 per cent in our first mating."

The switch coincided with a decision to increase flock numbers and Mr Holt said the higher fertility of the Dohne would help achieve this goal quicker.

"With Dohnes it appears you don't need to run as many ewes to breed a lot of lambs because they can achieve lambing percentages between 100pc to 120pc," he said.

"They tick all the boxes when it comes to the profit drivers of an operation," Mr Holt said.

"They have good fertility and mothering ability, good growth rates and top carcass traits."

BABIRRA DOHNE STUD

ANNUAL ON-PROPERTY AUCTION
Tuesday 22nd August, 2017 at 11am.

TO BE HELD AT BABIRRA – STANSBURY



BABIRRA MT PLEASANT DOHNE RAM SALE
Monday 11th September, 2017 at 1pm.

TO BE HELD AT MT PLEASANT

Craig - 88525 000 Robert - 88524 200
Mobile 0427 525 000 Mobile 0427 524 200
EMAIL: clfarrow@internode.on.net

AERO DOHNE STUD

- True dual purpose, dual income sheep offering flexibility in both Stock Management and Marketing.
- The Dohne are an easy care, tough breed of sheep suited to a variety of climatic conditions.
- Aero Dohne Stud stock are soft skinned producing well nourished, soft handling, bright wool.
- The Dohne are a naturally polled & self replacing breed.
- Highly fertile with great mothering ability, the Dohne ewe is a great prime lamb dam.



GET THE DOHNE ADVANTAGE
ENQUIRIES WELCOME
Melton, Victoria

Stud Principal: Stephen Reddie 0409 420 452
www.aerodohne.com.au | Email- stephen@aerodohne.com.au
Stud Classifier: Michael Elmes 0429 847 552





Hamilton Run



2016 Stud Sire Sales:
HR130004 Chile, South America \$20,000
HR140857 Far Valley, Western Australia \$11,500
Influencing flocks in Australia, Chile & Argentina.

PIONEERED TO THRIVE IN THE EXTREMES.

Annual Ram Sale

Tuesday 29th August 2017- Jamestown SA

www.hamiltonrun.com.au



Greg Andrews 0428 161 746 hamiltonrun@bigpond.com Ian Bradtke 0407 729 341



MEAT / GROWTH RATES

"The Dohne produces an award winning, high yielding (up to 49 per cent) prime lamb carcass with attributes being equal to the commonly known terminal breeds with one exception – less fat."

Dohnes compare favourably in the Tasmanian midlands

CATE & ASKIN MORRISON
Midlands, TAS

THE WEIGHT gain and finishing ability of the Dohne has turned a Tasmanian wool and first cross lamb enterprise on its head.

Askin and Cate Morrison ran a traditional fine wool enterprise in the Midlands but consistently had trouble finishing lambs to a saleable 13-18kg dressed weight before the harsh winters set in.

A Dohne infusion in 2014 has resulted in increased weight gains without a loss in wool production, a quicker turn-off period and less young stock to carry through winter.

The couple previously ran a Merino flock, lambing 7000 ewes to Merino rams and 4000 to terminal sires for first cross lamb production. Mrs Morrison said the long, harsh winters often proved difficult for weaner lambs.

"We lamb late in October due to the climate but it meant our Merino hoggets were not of a saleable weight in their first winter," she said.

The crossbred lambs were sold as either as stores to finishers or to Tasmanian Quality Meats for their 13-

18kg dressed Middle Eastern market. However, the Merino lambs were unable to meet the over-the-hook specifications in the same time frame.

"We needed to address the difficulty of getting young sheep through the winter so we looked for another sheep breed to help us access markets with our wether portion," Mrs Morrison said.

After speaking with other breeders and an agricultural consultant, the couple introduced the first Dohne rams in 2014.

"We weren't giving up too much wool production and getting a lot better growth rate out of our sheep," Mrs Morrison said.

The 2014 drop F1 Dohne wether lambs were compared with the 2014 drop Merino wether hoggets sold last year. They were weighed at weaning, with the F1 Dohnes averaging 25.4kg liveweight (24 hours off feed and April shorn) and the Merinos 22.9kg (2 hours off feed and unshorn).

All lambs were turned onto a forage turnip crop, with the F1 Dohnes weighing an average of 32.9kg liveweight a month later for an average daily gain of 200 grams.

They were then finished on a ryegrass pasture. "We were expecting the first truckload of F1 Dohne lambs to go to Tasmanian Quality Meats in May but they were heavier than anticipated on the grid at over 18kg dressed," Mrs Morrison said.

"All Dohne lambs were gone by June 26 to dress at 16.7kg and average \$36 a head more than the Merino hoggets, which were sold the following November."

Mrs Morrison said processor feedback was positive on the Dohne's market suitability and ability to meet grid specifications.

"The Dohnes have done what we wanted them to do, and that is to allow us to turn off a large proportion of our wether hoggets before mid winter, so we are only carrying half of our young stock through," Mrs Morrison said.

"This will make a huge difference to our business. The young Dohne ewes have done it tougher, coped better and were fed less pellets than the young Merino ewes at the same time.

"We have no intention of changing – the Dohnes will be good mothers for our first-cross enterprise as well."

Tassie back to back carcass winners

RICHARD & SARAH JOHNSTON
Longford, TAS

DOHNES have also been successful for Tasmanian sheep producers Richard and Sarah Johnston, Esk Farm, Longford. **The couple won the Campbell Town show's Paddock to Plate competition twice in a row with second cross Dohne lambs.**

The lambs averaged 56kg liveweight, had a carcass weight of 26.8kg and dressed at 49pc. The carcass from their winning heavy export and overall team scored a perfect 50 points, with the pen of three amassing a total aggregate of 97 from 100 points.

The winning carcass had a live weight of 55 kilograms and yielded 49.61 per cent for a dressed weight of 27kg. Adding further validation to the Johnstons' breeding program, their second entry (of the same breeding) placed second in the heavy export section. The lambs were all grass finished at Esk Farm.



• Richard Johnston pictured with his daughter Lucy.



• Roger Fletcher, Fletcher International with the late Peter Hyland.

Dohne shines in carcass and market suitability at Dubbo Show

DOHNE lambs have stacked up for carcass traits and market suitability by taking out the export class at this year's (2016) Dubbo Show Prime Lamb Hoof and Hook competition.

Purebred lambs filled three of the four top carcass placings in the export class in the competition, held in May at Fletcher International.

Catering for pens of six, the competition drew a record 528 entries from 12 maternal, terminal and composite breeds.

The late Peter Hyland, past Eastern States President, Geurie, NSW, won the export class with a pure Dohne pen averaging 57.2kg

liveweight, with a 27.6kg carcass weight, 48.3 per cent yield, 18.1sqcm eye muscle area and fat depth of 10mm to return a total hook score of 44.8 out of 50.

Third place was a Dohne pen averaging 30.3kg dressed, 51.6 per cent yield and with a 15.4sqcm eye muscle area for a total 43.5 points.

Fourth place was a pure Dohne pen averaging 53.2kg liveweight, 24.5kg carcass weight, 46.1 per cent yield and a 14.4sqcm eye muscle area to total 43.5 points.

The Dohne entries were the only breed to score nine or greater out of 10 on carcass suitability.

Steve Gamble W.A.'s producer of the month

STEVE GAMBLE
Wyalkatchem, WA

WYALKATCHEM producer Steve Gamble was quite chuffed to learn that his Dohne lambs had won **WAMMCO's Producer of the Month title for March, 2017.** At his instigation, the Gamble cousins, Steve and David, switched their sheep genetics from pure Merino to Dohne in 2005 because of a disappointing trendline for wool and brighter prospects for prime lamb.

"Once we adjusted to the prevalence of small lambs at lambing, and saw how rapidly the Dohnes matured and grew, we quickly realised that the change would pay off," Steve said last week.

"I believe they are more drought tolerant than Merinos, still grow a handy clip of wool and consistently deliver more than 100 per cent lambs. Our sheep management is probably better organised but also easier because of benefits like a lower risk of flystrike."

The winning draft of lambs from Gamble & Co, consisted of 206 Dohne lambs delivered straight from lupin stubbles processed at Katanning on March 29. They averaged 22.78 kilograms to return \$136.01 per head – with 99.5pc of the consignment meeting WAMMCO's processing and marketing criteria.

The company supplies up to 1000 prime lambs a year, mainly to WAMMCO with the tail going to the Muchea Livestock Centre.

"Apart from the remnants of some medic pastures and an annual crop of lupins for stubbles and to keep the silos full, the lambs have run entirely on natural pastures," Steve said.

Article courtesy of Farm Weekly, WA.

Glenaroua Dohne Stud

Flock No.80

GLENAROUA, VICTORIA

Pre Fix GLN



13th Annual Victorian Invitation Ram Sale
Ballarat Showgrounds, Ballarat VIC
Thursday 2 November 2017



Alistair & Cheryl Greenshields
P: 03 5793 8256 cheryl.greenshields@bigpond.com

Adam & Julie Mumford
P: 03 5793 8403 M: 0427 390 878

Wool and meat value makes Dohne a winner in South Australia

DAVID HEAD
Tintinara, SA

THE COMBINED wool and meat value makes the Dohne a profitable choice for South Australian lot feeder David Head.

His Tintinara based feedlot, Tolmer Rocks, turns off 10,000 to 15,000 store lambs a year, with Dohne sired lambs comprising 25 per cent.

The wool cut, skin value, daily growth rate and carcass quality of the Dohne puts it in the winner's circle for profitability, according to Mr Head. Mixed sex lambs are sourced from preferred suppliers or from

AuctionsPlus, and enter the feedlot at an average of 35kg liveweight at fat score one to two. Licenced for 8000 head, the feedlot was started more than 15 years ago to combat a grass seed problem in lambs.

Mr Head said there was a four to six week window when silver grass shed its seed and lambs needed to be removed from affected paddocks.

"The Dohne cross lambs will achieve daily weight gains of 320-360 grams compared to Merinos on 260-280 grams," Mr Head said.

They are drenched, vaccinated, treated for lice and shorn at

induction, with the Dohne cross lambs cutting an average of 2kg valued at 1000c/kg or \$15/head less costs. "The Dohne skin is worth \$20 so I can make \$35 before I sell the meat," Mr Head said.

"Although the Merino will cut 2.8kg, you need to consider the whole picture with the Dohne carcass worth an extra 30c/kg above the Merino."

"Dohnes are easy care, plainer sheep with the ability to cut 4.5-5kg of wool and lamb at 10-15 per cent above the Merino."

"When the going gets tough, the Merino will drop in condition but the Dohne will be quicker to bounce back once the season turns."

At Tolmer Rocks, the lambs are run in 16 pens holding 500 each, and consume an average of 1.3kg/day.

They are fed a starter ration of 90 per cent hay and 100 grams of barley each – this is gradually increased over 14 days to a full ration of 15-18 per cent lupins and barley, and four per cent minerals. During winter months, the ration also comprises 15 per cent wheat.

"The first turn off exits the feedlot at nine weeks at 25kg dressed weight or 56kg live," Mr Head said.

This is followed by three drafts over 12 weeks, with the lambs processed at JBS Australia or Thomas Foods International. With commercial Dohne flocks on the increase, Mr Head plans to continue purchasing the dual purpose breed.

He said the key to lot feeding was having a good eye for stock, passion for the job and to be honest about making mistakes. "You will never make money out of dead or crook sheep so it is important to be able to look after those tail enders as they will be the ones to make you a profit," he said.

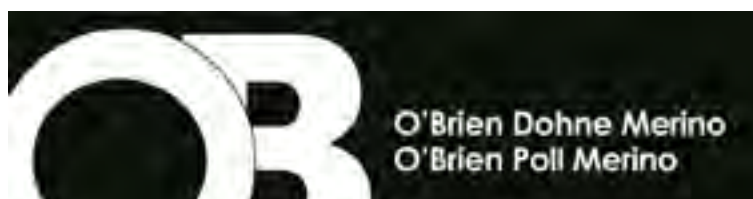


Wellington Hoof & hook winners

DOHNES also proved their salt in carcass competitions around the nation in 2013. In October, a Charollais/Dohne cross lamb won the hoof and hook competition in the 2013 Wellington Springfest Prime Lamb competition, with a liveweight of 55kg, carcass weight of 26.6kg and dressing percentage of 54.1.

In the same month, purebred Dohne wether lambs scored equal- first carcass honours alongside Poll Dorset-cross lambs in the Rutherglen Lamb Expo feedback trial.

Photo courtesy of The Land (Rural Press).



Offering 120 rams

OJD vaccinated

Brucellosis accredited

Auction

Thursday 27th July 2017 @ 1pm

Wudinna Show Grounds

Contact

Darren 0419772173

www.obriendohne.com

KINTAIL PARK DOHNES

FOUNDED 1999 – JERRAMUNGUP, WA. :: PREFIX: KP :: FLOCK NO 8

Helping the producer maximise profits!



*"Bred in the
paddock to
perform in the
paddock"*

**More lambs on the ground,
more \$\$ in your pocket!**

ON-PROPERTY FIELD DAY

Thursday, August 31, 2017

**8TH ON-PROPERTY
KINTAIL PARK RAM SALE**

165 SPECIALLY SELECTED RAMS ON OFFER

Thursday, September 14, 2017

**See us at Newdegate Machinery Field Days
September 6 & 7**

*High fertility – Quality wool – Fast growth rates
All in one easy care, self-replacing flock*

Contact: Kim, Colleen or Rhys Parsons Phone: 08-9835 1128 mob: 0427 351 128
Rhys Parsons Mob: 0427 351 500 • email: kparsons@wn.com.au

www.kintailparkdohnes.com.au



FERTILITY - THE ULTIMATE PROFIT DRIVER

"Fertility is one of the main drivers for profit in the sheep flock, and certainly a key measure in assessing flock reproduction and genetic improvement in studs."



Reproductive performance plus in South Australia

NEVILLE & CELIA KERNICK
South East, SA

FOR any prime lamb business, the financial equation is quite simple – the more lambs born each year the more lambs there are to sell.

South East SA farmers Neville and Celia Kernick are heading in the right direction, lifting their marking percentages at Rangefield, Field, by 14 per cent. They are really pleased with the high fertility, extra growth and carcass attributes of the breed.

The top Dohne ewe lambs are retained for breeding purposes and the older Dohne ewes are mated to White Suffolks.

The enthusiastic couple marked 127pc lambs from the Dohne ewes, run as a self-replacing flock, and 126pc for the Dohne ewes joined to White Suffolks. Another key to their flock's improved fertility has been through genetics, buying rams with high maternal reproductive rates.

"We keep an eye on all the Australian Sheep Breeding Values but in particular we look at high eye muscle depth in an attempt to lift our dressing percentages, high weaning weights and the

maternal reproductive rates," Mrs Kernick said. "We will continue to push as high as we can with our reproductive rates while still closely managing our ewes."

COLIN BLACK
Laura, SA

SOUTH AUSTRALIAN farmer Colin Black first introduced Dohne rams to his livestock program about five years ago, and was immediately impressed with the results.

He has since completed the transition from Merino to Dohne rams and has reported a 20 per cent increase in lambing rates. The two, three and four-year-old ewes mated to Dohne rams and the older ewes are mated to White Suffolk rams – a practice Mr Black has continued from his time running Merinos.

"Five years ago I mated one mob to Dohne rams because I wanted to plain down a bit," he said. "I put a different colour tag in the Dohne lambs at tailing so I could tell the difference between them and the Merinos. All the Dohne and Merino lambs were treated the same and run together in the same mob when weaned."

"When the lambs were crutched before shearing, the Dohne lambs were a lot heavier and were much better doers than the pure Merino lambs. When I pulled out my top 100 wethers to sell in-wool, 70pc of the top 100 were Dohnes, even though just one-third of all the lambs were Dohnes."

Mr Black had planned on gradually introducing Dohnes across the property, but the first year results inspired him to make the switch sooner.

"I was going to do one mob to Dohnes each year and do the change slowly, but after that I decided it'd be easier to do it all at once and I was confident the results would be there," he said.

"In doing so I have increased my lambing by 20pc, and they are a more robust and quicker maturing lamb than the Merino. I think that Dohne lambs utilise feed better when things are tough, so our ewes stayed in good condition all summer."

"Dohne lambs are also definitely stronger at birth – I'm sure that's what has helped us up our lambing percentage."

Selection pressure and increased sale numbers – a winner in NSW Riverina

TOM & SOPHIE HOLT
Urana, NSW

TOM HOLT 'Coonong Stn' has seen their lambing percentage – including maidens – climb to an impressive 124 per cent unscanned.

"With that lambing percent we can get very precise; you can class at 50pc instead of 30pc so you can really tighten up your mob," Mr Holt said.

From the first mating of Dohnes at 'Rivalea' in the Southern Riverina, lamb marking rates increased dramatically from a rolling average of 90% originally in the Merino flock to 120% in the Dohne flock. Part of this increase in the marking percentage was put down to the superior mothering ability of the Dohne ewe.

The performance of the Dohne breed has met all expectations at Rivalea. The performance of the sheep at both Rivalea properties has seen dramatic improvements in growth potential, lamb survival and mothering ability.



• Visitors at Coonong Stn during the 2016 Global Dohne Conference Tour.

The benefits of these qualities are providing significant financial benefits to the company. The traits

that the Dohne breed is becoming renowned for are truly on display in this flock.



- Consistent high quality ASBVs
- Paddock run stud
- Free delivery within WA
- Quality and satisfaction guaranteed
- Customer focused and loyalty rewarded

2017 RAM SALES

COOROW

29th Aug. 2017 | Carnamah Sale Yards

MAYANUP

9th Sept. 2017 | Cray Brook On Farm Field Day

(more information to be provided closer to date register interest via email below to be kept up to date)

For more information contact:

HAROLD WASS

P: 0407 344 517 E: wassholdings@bigpond.com

www.haroldparkdohne.com.au

 Find us on
Facebook
Harold Park
Dohne Stud

Fertility the key in Western Australia

GREG MOIR
Amelup, WA

THERE is no silver bullet when it comes to the perfect breed of sheep, but when Western Australian farmer Greg Moir, his son Darren and son-in-law Paul Richardson came across the Dohne, they knew they were close.

"Five years ago we were sick of relying on the wool industry and went looking for a dual-purpose sheep," Greg said.

"After searching high and low for the perfect sheep we soon realised there were no silver bullets for the ultimate breed," Paul said.

"We needed a breed that could basically look after itself and fit around our cropping program, and one of the best things about the Dohne is that they are a self-replacing flock, which was the main reason we decided to go into them."

"Our Dohne's seem to have the ability to keep their condition and

the lambs aren't born and try to die like Merinos," Paul said.

Since shifting to the Dohne breed, Greg said they have seen an increase in their average lambing percentage by at least 10pc to 15pc.

"We have always achieved good lambing percentages, even with our Merinos we were getting 90pc lambs on the ground, but now with the Dohnes we are getting 117pc which is quite a difference," Greg said.

"This year we will drop our first purebred Dohnes and we will continue to produce lambs until our entire flock is pure Dohnes."

"The best thing about the Dohne is we can get a prime lamb price, not a Merino price, in the market place." Greg said.

RAY, TERRI & JUSTIN EDWARDS
Ravensthorpe, WA

RAY, Terri and Justin Edwards are strong proponents of the Dohne breed. Dohnes are well suited to

the family's Ravensthorpe mixed sheep and livestock enterprise, the farm's heavy country and the no-fuss management system the family stands by.

But Dohnes came into the picture in 2007 following a spate of years in which Ray started to notice a decline in the farm's lambing percentages.

Achieving somewhere in the vicinity of 75-80pc became the norm – and that was in a good year.

Anecdotal evidence from friends and neighbours throughout the district suggested that others were achieving much higher figures using the Dohne breed, while also maintaining a solid wool clip.

Father and son pair Ray and Justin have seen a marked increase in their lambing percentages in the years since Dohnes were introduced.

Since buying their first Dohne rams in 2007 the figures have skyrocketed to more than 110pc. This year they marked 117pc.

Hillview Dohne STREAKY BAY



ON PROPERTY RAM SALE

Friday, August 18th
2017

Meat + Wool + Fertility = \$\$\$\$

Peter Holmes 0438 179 123
Heather Holmes 0427 266 939
E. frog@eyreonline.com

EAGLE RIDGE

Dohne Stud

ANNUAL ON PROPERTY RAM SALE COWELL SA

Wednesday 23 August 2017

Sale Commencing at 2pm

40 April/May Rams on offer

Brucellosis Accreditation

MEAT + WOOL = \$\$\$\$



Paul & Jacqui Webb

PO Box 87, Cowell SA 5602
M. 0427 296 022 | P. 08 8629 2333
E. eagleridgedohne@bigpond.com

Flock No 162 | Prefix ER



*Majestic 1051
Supreme Dohne
Australian Sheep and
Wool Show 2016*

Australian Foundation
Flock No.4
Warren NSW

**14th Annual On Property Ram Sale, Warren NSW
Wednesday 20 September 2017**

150 specially selected two tooth rams

**13th Annual Victorian Invitation Ram Sale, Ballarat VIC
Thursday 2 November 2017**

20 specially selected stud and flock rams

Semen, Embryos Sales Available Domestic & Export

John Nadin
Mob: 0427 474 610
Greg McCann
Mob: 0499 865 120

Office
Tanya Barton
02 6027 1190
macquarie@dohnes.com.au

Victorian Ram Depot
David Mitchell
03 51 577530



www.dohnes.com.au



VERSATILITY

"It was a business decision to pursue the meat market and it's been a good one. The Dohnes are easy to manage, are highly fertile, do well in the feedlot and yield well."

Justin O'Brien, Cryon Station, Walgett NSW

Combination of traits gives Dohne advantage in northern NSW

O'BRIEN FAMILY Walgett, NSW

THE COMBINED carcass and wool value of Dohnes is proving the goods in a vertically integrated broadacre cropping operation in northern New South Wales.

The O'Brien family of Walgett value add their cereal and pulse crops through an on-farm sheep feedlot, turning off up to 8000 Dohne mixed sex lambs a year to the domestic and export markets.

The lambs are produced by the family's 4000 Dohne ewe flock and also sourced from other regional commercial purebred flocks.

The lambs have a week's induction in the 3500 head capacity feedlot on a barley, faba bean and pellet ration then move on to self feeders with 75% barley, 20% faba beans and 5% pellets.

Average daily liveweight gains are 280 to 300 grams to give a net feed



• Justin and Dennis O'Brien at Cryon Station.

conversion of one kilogram of body weight to four kilograms of grain consumed.

Lambs enter at 35kg liveweight for an eight-week feeding period, while lambs 40kg plus are fed four to six weeks, with exit liveweights at 50kg.

The last consignment of 597 Dohne lambs were sold to Fletcher International, Dubbo, in May for \$6.50/kg dressed at an average liveweight of 60kg.

The average carcass weight was 28.7kg and the average value including skins of \$14, was \$200.66.

"The last lot of lambs yielded 47.9% and we use that feedback to fine tune the feeding program," Justin said.

"We know if it is a 55kg lamb at exit, it will dress at 25.5kg."

"We never had any problems with fat cover – they are a leaner animal with less wastage for the butcher."

"It was a business decision to pursue the meat market and it's been a good one. The Dohnes are easy to manage, are highly fertile, do well in the feedlot and yield well."

FLETCHER INTERNATIONAL EXPORTS PTY. LTD
LOT 11 YARANDALE ROAD DUBBO NSW 2830
PH: 02 98 845833 FAX: 02 68842965
ABN 64 003 213 852

OVER THE HOOK FEEDBACK SHEET

LOT: FHE KILL DATE: 10-Apr
TOWN: WALGETT
PROPERTY: CRYON STATION

GROUP	NO. HEADS	WEIGHT	CWG	SKIN	TOTAL \$	\$ PER HEAD
25+	258	30.50	\$ 8,500.15	14.00	\$ 76,055.31	\$ 292.45
24-25	219	29.30	\$ 8,500.15	14.00	\$ 60,540.52	\$ 276.69
20-24	10	11.81	\$ 8,500.15	14.00	\$ 3,803.77	\$ 380.38

AVERAGE WEIGHT: 28.72
TOTAL HEAD DELIVERED: 587
DEAD ON ARRIVAL (D.O.A.): 0
DEAD IN YARDS (D.I.Y.): 0

CONDEMN REPORT

CONDEMN	NO.	REASON	NO.
CANCER	0	EMACIATED	0
C.L.A.	0	SARCO	0
ANTHRAX	1	SEPTIC	0
FEVER	0	OVIS	1
WOUNDS	0	BALDING	0

TOTAL CONDEMN: 1

PAYMENT DETAILS

TOTAL HEAD PROCESSED: 585
AVE PER HD: \$ 200.66
GST PORTION: \$ 11,939.16
TOTAL AMOUNT PAYABLE: \$ 121,330.76

• Feedback Sheet.

"The wool cut, skin value, daily growth rate and carcass quality of the Dohne puts it in the winner's circle for profitability."

Easier finishing in South West QLD

CLARK FAMILY Cunnamulla, QLD

DOHNES have shown the ability to handle the sometimes harsh conditions on the Clark family's property 'Pabra', near Cunnamulla in south-west Queensland.

They run between 2000 and 3500 ewes in the operation, depending on the season, with the operation traditionally running a Merino flock.

In 2004 the Clarks began to introduce Dohne rams to their Merino operation, looking to move to a dual-purpose flock.

"We were looking to limit our exposure to the wool market, but I still wanted to keep an interest in wool," Mr Clark said.

"I didn't want to head towards a sheep with medulated fibres and I didn't want to be solely a meat producer."

Mr Clark said he selected Dohnes as he liked their constitution and wool type. "They had a better wool type than some other dual-purpose breeds, and because I wanted to keep a little focus on wool we went with the Dohnes," he said.

"We're finding that they do seem to convert feed a bit better, and in the last six months our stock are in quite good condition, while some of the more Merino types aren't," he said.



"We're comfortable with how they handle the dry and cover the country."

Mr Clark said they looked for a big-framed sheep with a plain body, and this had helped them to cease mulesing. "We modified our mules and got smaller, but it got to the point where we just didn't need to do it and we stopped in 2008," he said.

While Mr Clark said they had finished some of their wether lambs before, but this wasn't their aim.

"We're geared up to sell the wethers as store lambs," he said.

But when they had finished lambs, Mr Clark said the Dohnes finished easier than a Merino lamb, and were more marketable.

The surplus female sheep are also sought-after, according to Mr Clark.

"Our cull ewe weaners have gone to a repeat buyer for the last few years, who joins them to terminal sires," he said.

"Our older ewes also sell well too – there's always demand for them."

Swing to Dohne in Western Australia

JEFF BRENNAN Wongan Hills, WA

ELDERS' Wongan Hills agent, Jeff Brennan, said WAMMCO's new focus on lamb and sheep production to the north of Perth was confirmation that producers in the region were continuing to invest in sheep and were also enjoying better returns for wool as well

as stable incomes from prime lamb.

"While there has been no rush back into sheep, producers have been consolidating their livestock enterprises," he said.

"We are seeing a swing to White Suffolk and Dohne genetics in particular with carcass weights at the top of the commercial range."

Doing ability in southern NSW

TOM HOLT Urana, NSW

"THEY make money over other breeds because of the minimal input – it's the dollars you can save that makes the difference," he said.

"They're not a selective grazer; you can have a lucerne stand and a Paterson's Curse and more often than not they'll hit the weed."

"Their doing ability is phenomenal."

Animal welfare prompts move in NSW

RIVALEA Corowa, NSW

RIVALEA Agricultural, Corowa NSW, made the switch from a Merino to a Dohne flock in 2010 to reduce flystrike and eliminate mulesing.

A corporate decision was made on animal welfare grounds to cease mulesing.

Lambing percentages were lifted from 90 in the Merino flock to 120 in the Dohnes, with virtually nil flystrike and the elimination of crutching.

Western Australia has the perfect mix

GEOFF BILNEY
Kojonup, WA

"WE WENT into Dohnes to get a self-replacing flock type ewe who's wether progeny, when they are in a purebred bases, will be more competitive as a Prime lamb carcasses with the ewes producing better quality wool.

The fertility of the Dohne ewe is

pretty significant and we tend to find that they will do 20% better lambing than a comparable Merino ewe under our system.

We've had circumstances where we have pushed our ewes too hard and the merino ewes struggle to get back but the Dohne ewe gets back up to being fit and able and healthy to go with their lambs, she's really quite adaptable she can she can

tough it out considerably better and she'll produce when things are good or bad.

In the next 5-10 years I see the Dohne as a purebred which is where everybody is going to head, where you will continue to mate a Dohne to a Dohne until you get to the purebred, that's where she will really shine."

Dohne keeps ticking all the boxes

TOM BOWEN
Katanning, WA

TOM BOWEN, Landmark State Commercial Sheep Manager for Western Australia, says the **Dohne is a magnificent animal to work through different sheep breeding programs.**

"They've got the conformation and body shape to suit all the export and slaughter markets and the growth rates to suit those early turn off lambs or you can run them through to an outer season feeder lamb."

"They are very versatile; they suit the airfreight market, 12-18kg

dressed, the 36-38kg live market as they are quick growers and have the fat to carry them and the heavy weight lamb, keep them growing and they will keep performing for you."

"Fertility is one of the most important profit drivers and the Dohne does it magnificently."



David Kain

107 Howie Road ARTHUR RIVER WA 6315

E. kain@farvalleydohne.com.au

M. 0429 626 012

www.farvalleydohne.com.au

SALE DATE – WEDNESDAY, 13TH SEPTEMBER

Will have 130 Rams at this stage on offer by auction.

1,000 specially selected mixed age purebred Commercial Dohne ewes

500 specially selected Dohne ewe lambs, June/July drop.

As usual, Far Valley has continued its 8 year trend of gradually raising wool cuts on their Dohnes to bring the WPP%(Wool Production Potential) up to 5.6. Whilst its taken quite a few years, its starting to pay dividends, with the help of higher wool prices.

The Commercial success of our clients, remains upmost in our mind at all times and with a large Commercial flock ourselves, it makes it easier for us to test and measure the performance of our Commercial ewes.

High Fertility, excellent milking ability and the fast robust growth of our lambs enable us in most seasons to

finish the majority of the male portion of the lamb drop and sell as sucker lamb. Add the 5 year average woolcut of 5.35 kgs and rising, of 19 micron wool and we have a ewe that has the capability of making the Commercial grower a very good return on investment.

Last years ewe lambs when shorn in April cut an average of 3kgs, 18.3 micron and 80mm length and sold for over \$13.00/kg greasy.

Have mated those ewe lambs, but have not pregnancy tested them as of yet, so not sure of end result.

You do the sums... **Wool, Meat = hard to beat !!!**

- ✓ High Fertility
- ✓ Prime Lambs
- ✓ Exceptional Mothers
- ✓ Non Mulesed
- ✓ Trait Leading ASBV's
- ✓ Quality Apparel Wool



“More Than Just a Merino Fleece”



Supreme Ram Champion Pairs – Australian Sheep and Wool Show 2016

12th Annual On Property Sale, Corowa NSW
Tuesday 19th September, 2017

Victorian Invitation Ram Sale, Ballarat VIC
Thursday 2 November 2017

ENQUIRIES AND INSPECTION WELCOME

Don & Karen Mills, Corowa NSW P: (02) 6035 8516 M: 0427 872 808

E: dklmills@bigpond.com | W: www.kardiniadohnes.com.au



GROSS MARGINS

"Since its inception the aim of the Dohne Merino has been well defined with the breeding objective to improve meat, wool and reproductive traits."

Dr Graham Lean, Agrivet Business Consultancy, Hamilton VIC

The Dohne does stack up well financially

DR GRAHAM LEAN
Agrivet Business Consultancy
Hamilton, VIC

GRASSGRO® is a CSIRO developed computer program that models the returns and productivity of different sheep and beef cattle enterprises over the long term. It uses soil, weather data, financial data and animal production traits to simulate a grazing system.

GrassGro® calculates animal production and subsequent financial performance for each year and presents the average for the simulated period as well as the variation in results over the simulated period.



GrassGro® has been validated numerous times in different Australian locations (Donnelly et al. 2002).

Prices were based on real (inflated adjusted) prices for wool based on

weekly AWEX quotes for the last 10 years to reflect the normal variation in economic activity that impacts on the demand for wool.

There was no wool stockpile sales in this 10 year period so that abnormal supply was not detrimentally affecting

prices, something that would not be anticipated to occur in the future. Meat prices were based on the last 10 year real (inflation adjusted) meat prices as quoted by MLA.

The simulations were based on the three flocks grazing highly improved and fertilized perennial ryegrass and sub clover pastures at Hamilton VIC, phalaris and sub clover pasture at Kybybolite SA and an annual grass and medic pasture at Roseworthy SA.

These three locations were chosen to provide a comparison of performance at higher rainfall (approximately 685mm, 525mm, and 490mm respectively).

10 year average commodity price analysis

THIS ANALYSIS modelled the Dohne, fine wool Merinos and a crossbred Prime Lamb enterprise run in three different environments and found the Dohne is more profitable based on the last 10 year prices whether it is being run in high, medium or low rainfall environments.

It would appear that the adoption of objective measurement and

modern breeding tools has meant that the breed's objective has been well implemented over the last 50 years.

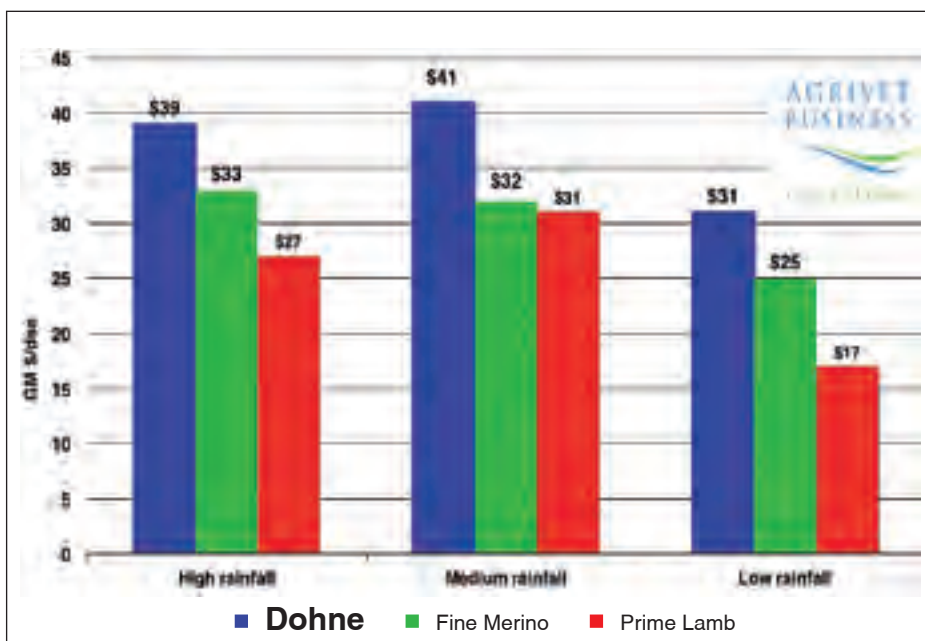
The gross margin performance over the three sheep enterprises in the three different locations is summarised in Figure 1. The Dohne is the most profitable in all three locations, with the order of the enterprises unchanged depending

on the location. The profitability of the low rainfall site at Roseworthy SA is reduced due to heavy supplementary feeding due to time of lambing, which in actual fact is likely to be largely supplied at no direct cost from stubbles in this location. At the medium rainfall site all three enterprises benefited from higher lambing percentages due to better survival rates. Thus benefiting the prime lamb enterprise.

The Dohne sheep perform well in this analysis, which is not surprising given their dual purpose nature and the high prices that have been on offer for meat and wool over the last 10 years.

Of course, like any enterprise, poor management or animal health issues could easily erode these advantages, so to realise this potential good management inputs are required, just as it would be with the other enterprises. Further, breed averages have been analysed in this paper. Individual flocks could have better genetics in either of these three breeds, which will change the financial outcome significantly.

For the full report go to <http://dohne.com.au/wp-content/uploads/2016/08/DOHNES-HOW-HEY-STACK-UP-FINANCIALLY.pdf>



• Figure 1: The Dohne is the most profitable in all three locations.

"The Dohne sheep presents a very different alternative to sheep producers than previously available sheep genetics in Australia. With emphasis on both meat and wool traits, it presents the potential to have a true dual purpose sheep, which provides an alternative to the fine or medium wool Merinos and specialist prime lamb breeds or composites that have been traditionally used in sheep enterprises."

Dr Graham Lean, Agrivet Business Consultancy
Hamilton, VIC

Current commodity price analysis

THIS report will update the paper I presented at the Global Dohne Conference in Dubbo in July 2016, with current commodity prices, rather than 10-year long term average commodity prices.

As a comparison, these analyses have been updated with current wool and meat prices in place of the 10-year average prices.

Despite extremely high superfine wool prices currently, which makes the fine wool Merino very profitable, the Dohne sheep still perform well in this analysis, which is not surprising given their dual purpose nature and the high prices that are on offer for meat and wool currently.

It is in line with results from

previous analyses that have been undertaken by this author and to an extent by Graham and White (2005), whose analysis predates recent higher wool and meat prices.

The gross margin performance over the three sheep enterprises in the two different locations is summarised in Figure 2.

The Dohne is the most profitable in the medium rainfall location, but has the same profitability as the fine wool Merino in the high rainfall location.

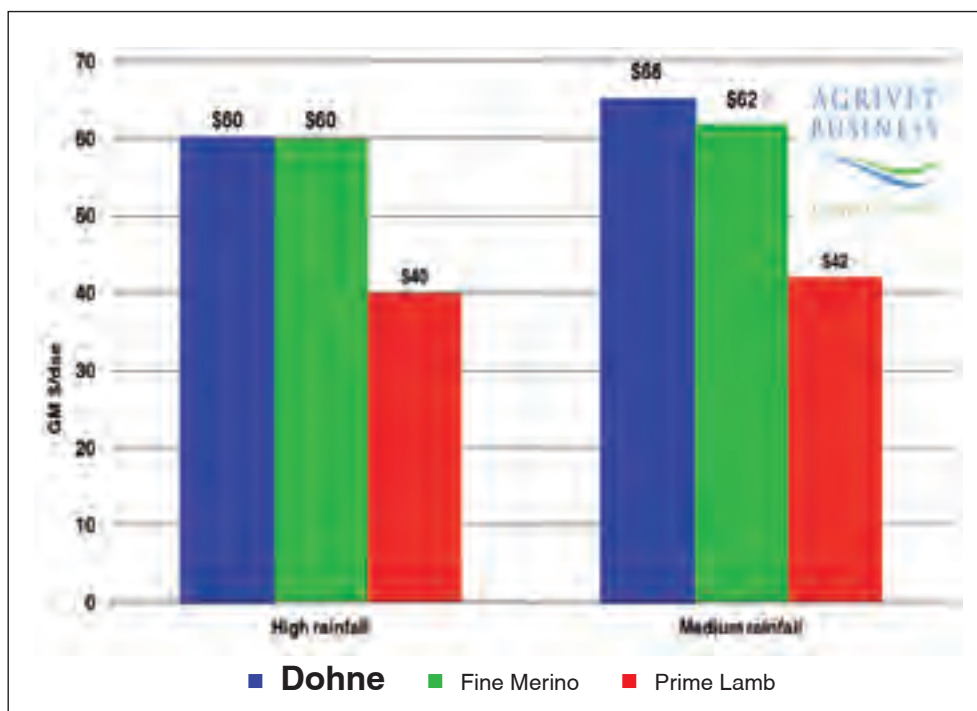
Lamb sales at the high rainfall location are reduced in comparison to the medium rainfall location due to higher lamb losses at lambing at the high rainfall location.

More survive after lambing at the medium rainfall location.

In conclusion, the Dohne stacks up well financially on current prices and its performance is testament to clearly stated breeding objective and achieving that through the efficient implementation of modern genetics tools.

This analysis complements the previous analysis using 10-year average prices, published at the Global Dohne conference held at Dubbo in July 2016.

For the full report go to <http://dohne.com.au/wp-content/uploads/2016/08/DOHNES-HOW-HEY-STACK-UP-FINANCIALLY.pdf>



• Figure 2: Gross margins of three enterprises in high and medium rainfall locations.

Willow Springs

Prefix OBJ Flock 161

"Cool Climate Dohnes"

Rams available all year round

Brucellosis Accredited OJD Vaccinated

Contact: Brian Wallis, 134 Jinjera Road, MICHELAGO NSW, M:0428 285 244 E:kantooa@bigpond.com



BIRTH OF A BREED

--- CAMERON McMASTER ---

THE DOHNE MERINO STORY



This book portrays a very informative history
of the Dohne breed.

Book proceeds go to The Australian Dohne
Breeders Association.

If you wish to purchase a copy please email the Association.
secretary@dohne.com.au

Golden jubilee celebration

Birth of a Breed: The Dohne Merino Story

CAMERON McMASTER,
Napier, West Cape, SOUTH AFRICA

THE DOHNE Merino Breed Society of South Africa celebrated its 50th anniversary on 16 May 2016. The Dohne Merino sheep breed which has spread far beyond the boundaries of South Africa and has made a name for its self in countries like Australia, New Zealand, South America and the Falkland islands, had its origins in 1939.

By 1957 when Cameron, the author of Birth of a Breed, was appointed as a young wool seller at the wool broker FCU in East London, there were already a number of Dohne breeders. While a staunch supporter of the pure Merino, it was only in 1960 after personal experience, that he realised that this new "crossbred" with very good meat and wool properties, was making far more money for its breeders than the Merino.

With a view to celebrating the half century of the Breed Society there is no more suitable person than Cameron to record in a fascinating book the rich and colourful history of the Dohne Merino and its Society. While his love and passion for the breed is clearly evident this did not prevent him from also referring to some of the low points of the breed. The infighting and competition between representatives of the various breeds, the clear bias against the breed by officials in the industry and the fight for the survival of the breed makes for gripping reading.

The book of 340 pages comprises eight parts and is richly illustrated with many colourful pictures. The first part deals with the period 1937 to 1950 and each part thereafter deals with the following decades. Part 7 which describes the phenomenal growth of the breed in Australia is written by Allan Casey, an honorary life member of the Australian Dohne Breeders Association. The last section of the book describes the growth and impact of the Dohne in South American countries and the Falkland Islands.

This incredible saga will not only be of interest to all Dohne breeders but will make a valuable corporate gift for all animal breeders.

NOORLA
Dohnes
WILLIAMS, WA

- Emphasis on type, muscling & wool
- Minimal supplementary feeding

"Doing it naturally"



14TH ANNUAL SALE
WEDNESDAY, SEPTEMBER 27, 2017

1pm, Williams Sportsground - 70 rams on offer

Inspections on-farm by appointment prior to sale

Contact: Jeremy Genders | Mobile: 0429 689 920 | Email: genderjn@gmail.com

Gullendah Dohne Stud

35th Annual On-Property Ram Sale

Tuesday September 19, 2017

Inspection: 10am | Sale: 1pm

120 Dohne Rams for Sale

CONTACT:

Andrew Hughes
02 6367 9236
andrew@gullendah.com.au

Peter Hughes
02 6367 9235
gullendah@activ8.net.au



 gullendah.com.au

 facebook.com/gullendah/



"Dohnes compared favourably to every other breed or crossbreed on gross margin returns. Significant improvements in wool and trade lamb prices over the past 12 months have placed the Dohne into pole position."

Geoff Duddy, Consultant, Sheep Solutions, Leeton NSW

The Dohne really stacks up

GEOFF DUDDY
Sheep Solutions
Leeton, NSW

SHEEP industry consultant and Lamb Forecasting Advisory Committee member, Geoff Duddy, Sheep Solutions, said the Dohnes improved weaning percentages were a major profit driver within the industry and that the dual-purpose breed had a huge ability to capitalise on changes in the wool, sheep meat and breeding ewe values.

Mr Duddy also said that the plain bodied, open faced and bare breeched Dohne would continue to pressure the Merino industry on improved animal welfare and called for less reliance on mulesing.

Mr Duddy said sheep producers could expect a 10 per cent lift in production from hybrid vigour by crossbreeding with the Dohne.

The Dohne is a true dual-purpose breed option capable of performing in a variety of environments. The use of objective testing programs and a focus on the major factors driving profit, performance and efficiencies within sheep enterprises, has seen the breed increase in number and importance in recent years. Continued improvements in wool and sheep meat returns ensure that the Dohne will remain a major contributor to the maternal ewe base nationally.

Over the past 2 decades we have seen an ever-growing focus on improving fertility, fecundity, lamb survival and growth rates, resilience of the breeding ewe base, increased focus on animal health and welfare practice, selection based on a sire/breeds genetic merit and the cost/benefit of sheep meat and wool production. These issues, combined with a declining national flock/breeding ewe base, and a greater focus on dual-purpose and/or composite breeds and crosses has seen an increased interest and accelerated use of Dohne genetics nationally.

Driven by strong export demand, sheep meat remains the primary profit driver with Australia's sheep industries gross value of production - now estimated as 60:40 for meat (slaughter lambs, mutton, surplus ewe sales) and wool (ABARE 2015) across all sheep-based enterprises nationally. Dohnes, as a true dual-purpose breed, are therefore increasingly well positioned



• Geoff Duddy, Sheep Solutions, Leeton NSW.

to benefit from improvements in sheep meat, breeding ewe and wool receipts.

In terms of mutton value the Dohne typically produces a heavier, higher yielding carcass than traditional medium framed Merino ewes. Breed growth rate advantages also offer opportunities for earlier (or heavier) sale of replacement breeding ewes and wether siblings, reducing on-farm production costs and increasing production efficiencies (discussed in detail below).

Interestingly the average skin values for merino-style wools have averaged more than crossbred sucker (+\$4.99) or older lamb skins (+\$5.90) over the past 2 decades, with differences of between \$10 to \$14 in 2015-2016 in line with improvements in wool prices (Figure 2). As a result gross returns for Dohne lambs are generally greater than Merino lambs and/or on par or above gross prime lamb returns based on the combined carcass and skin values.

The Dohne potentially offers improved fecundity, fertility, mothering ability, growth rate to weaning and an ability to perform in a range of environments (including pastoral areas). Improvements in weaning rates, driven principally through increased twin lamb survival, are a critical profit driver and a means for reducing costs/kg of product produced.

Despite the Dohnes comparatively heavier maternal body weights; their ability to convert many poorer quality feeds and feed seldom grazed by the traditional Merino, improves pasture utilization efficiency. Vipond (2011) has shown that increasing lamb number per ewe reduces energy required by

~ 40% per kg of carcass produced, improving ewe and production efficiencies. Given also that ~ 60% of total annual feed requirements are required for ewe maintenance (Fogarty et al 2005), heavier mature ewe weights need not be a major concern if lamb turn-off remains appreciably higher compared to (say) a traditional Merino ewe enterprise.

The dual-purpose self-replacing nature and use of performance recording of commercially relevant traits of the Australian Dohnes lends itself to;

- Capitalising on short to long-term changes in wool/sheep meat and breeding ewe values
- Use as both a terminal and maternal sire
- Increasing the national breeding ewe base
- Retention of on-farm quality assurance status
- Improvements in lamb survival, growth rates, wool and meat production efficiencies
- Improvements in ewe efficiency and resilience
- Increased speed of genetic gain for replacement breeders (reduced generation interval, earlier mating of ewe progeny), and
- Reduced costs of production/ improved benefit/cost ratios and therefore plays an increasingly important role within the Australian Sheep Industry.

For the full report go to <http://dohne.com.au/wp-content/uploads/2016/08/THE-DOHNES-ROLE-IN-THE-AUSTRALIAN-SHEEP-INDUSTRY.pdf>



ON PROPERTY RAM SALE

Friday 6th Oct 2017

*Offering 80 Stud &
Commercial Rams*

*Enquiries and inspections welcome
at our Goroke property*

Koonik takes the **limelight** at Australian Sheep & Wool Show

- **Grand Champion Ewe**
- **Champion Junior Ewe**
- 1st, 3rd, 4th & 5th Junior Ewe
- **Champion Junior Ram**
- 1st & 5th Junior Ram
- 5th Senior Ram
- **Champion Senior Pair of Rams**
- 1st & 4th Senior Pair of Rams
- 5th Junior Pair of Rams



Fiona Cameron 80 Swedes Dam Road, Nurcoun Victoria 3401
m: 0428 863 518 e: koonik@bordnet.com.au w: koonikdohnes.com.au

"The great thing about Dohnes is that they've got the right breeding objectives and they are completely measurable."

Rob Sands, Farmanco, Mundaring WA

Dohnes Drive Profit & Growth For Farmanco

ROB SANDS
Farmanco
Mundaring, WA

WE ARE extremely impressed with Dohnes remarked Rob Sands, Chairman of Farmanco (WA) one of the largest farm consultancy practices in Australia.

The great thing about Dohnes is that they've got the right breeding objectives and they are completely measurable. We do significant analysis over a number of Dohne flocks across various clients and we can monitor, compare and benchmark against other breeds in our operation. The results for Dohnes really come through in terms that we are making solid returns out of meat, about the same from wool but with lower production costs.

Overall when you put everything together a better gross margin is achieved and that is what it's all about.

Rob was quick to dispel the myth about Dohnes cutting less wool and pointed out that in reality there is more variation within a breed than between breeds. We are more than happy with



• Rob Sands, Farmanco, Mundaring WA.

our wool cut and see the dollars in the extra number of lambs that Dohne ewes wean. Farmanco consult to about 750 clients and sheep play a significant role with numbers around 1.2 million.

Most of our clients are mixed farming enterprises and through rotational crop programmes and utilising pastures have seen their profits increase by integrating Dohnes into their operations.

Dohnes are a breed that utilise the advancements in genetics coupled with the right objectives and objective measurements. Being mixed farming operations, cropping is providing larger returns but the reality is that Dohnes across Farmanco provide a sheep operation which is easy to manage, is not complicated but still drives profitability into our business.

On-Property Auction
September 21st 2017

OPTIMIZE PRODUCTION
FROM YOUR SHEEP THROUGH
WOOL, FAST GROWTH RATES AND FERTILITY USING
GLEN HOLME DOHNES



GH
GLEN HOLME

Contact - Allen Kelly
0409 018 943

www.glenholmedohnes.com

EDUCATION

Hands on education - the practical advantage

ROBERT DUNN
Tocal College
Paterson, NSW

TOTAL COLLEGE offers a range of agricultural courses designed to provide students with a diverse range of skills through first-hand experience.

As part of the subjects offered, Tocal students have been involved in the running of the self-replacing Dohne flock. From this, we have witnessed the advantages of high fertility, fast growth rates and exceptional wool quality that are considered standard to the Dohne breed.

Tocal students graduate as agriculturalists having experience in help running the college farms and completed commercial work placement, which prepares them to move forward into their working lives.

Traditionally, Tocal has run a 200 head first crossbred ewe flock joined to Dorset rams and additional 100 Merino wether wool cutters.

These enterprises were highly productive, but had low to medium



• Tocal College, students with Dohne Ewes.

educational value for students. Replacement ewes were replaced 200 at a time and all progeny sold or slaughtered in the on-farm butchery

training. As part of the Tocal sheep training program, students visited top performing sheep enterprises around the north of NSW covering

ULOOLOO

DUAL PURPOSE DOHNE MERINO STUD

Hall Family, Hallett
Barrier Highway, South Australia

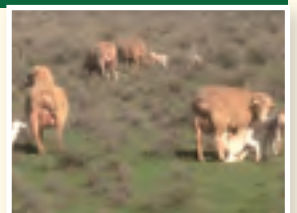
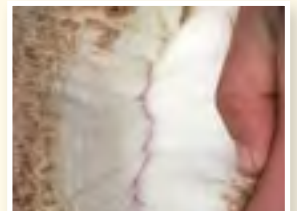
60 fully paddock run Dohne Merino Rams

OJD MN3 Brucellosis Free

On-Property Sale @ Ulooloo Station
Thursday 31st August 2017 at 1pm

Contact (08) 8894 2195
Rob: 0428 439 000 or Greg: 0417 833 893
E: hallmint5@activ8.net.au

 Search 'Ulooloo Dohne Merino Stud'



fine, superfine and soft rolling skins enterprises.

Exposure was also given to wool testing companies, meat enterprises and sheep meat processors/abattoirs. On our tours, we visited a number of Dohne enterprises and we were impressed with the dual-purpose performance of the breed.

Wishing to continually improve our education experiences for our students, we explored starting a self-replacing sheep flock. With production goals of achieving high fertility, high meat and wool production.

The Performance of the Dohne.

The 100 Dohne ewes were than run side by side with the remaining 100 crossbred ewes under the same conditions to evaluate their performance (Table below).

The performance of both crossbred and Dohne ewes were evaluated at Tocal college. Over this period, the wool produced from the Dohne ewes met the high standard required from a Merino enterprise seen within Australia.

The pregnancy rate was also recorded for both breeds. The results demonstrate the fertility of the Dohne breed was comparable to the crossbred system.

However, the benefits of the self-replacing nature of the Dohne breed

gave it the economic advantage. The pregnancy rate of the Dohne and the crossbred enterprise at Tocal college.

The surplus Dohne and crossbred ewes were sold into the same markets for similar comparison.

Dohne wether lambs and crossbred lambs were sold for the same price over the hooks at a local meat works at 22kg carcass weight. Cast for age ewes were also sold to the local saleyards and received the same returns.

Overall, being able to retain the ewe lambs from the Dohne enterprise saves Tocal college \$20,000 - \$25,000 every 5 or 6 years through the production of replacement ewes.

In 2015, we sold store ewes for \$84 and wether lambs 2 months after

weaning for \$75. Due to extreme weather conditions in 2014, there was a shortfall in the feed availability during May to August, which resulted in a lower, lambing percentage.

However, in our opinion the Dohne breed still showed its prolific adaptability to a diverse variety of climate conditions.

One of the greatest challenges to running sheep at Tocal college is the high rainfall. Tocal receives an average of **950 mm of rain each year**.

The certificate IV sheep electives are very popular due to the hands on experiences and responsibilities the students leave with a sense of pride and accomplishment that come with working with the Tocal's Dohne flock.

	PREGNANCY RATE (%)	
YEAR	DOHNE	CROSSBRED
2011	120	95
2012	135	115
2013	123	123
2014	107	120

• The pregnancy rate of the Dohne and the crossbred enterprise at Tocal College.



ALFOXTON

DOHNES

The white wool alternative

Annual On-property Ram Sale

19th February, 2018

At Alfoxton, Armidale NSW

CHRIS & CINDY CLONAN

Alfoxton, Wattle Drive, Armidale NSW

P: 02 6775 3245 M: 0429 125 567

E: alfoxton@bigpond.com.au



Top priced ram at 2017 Alfoxton Ram Sale sold for \$3,000 to Oakhurst Pastoral, North Star.



DAMP CLIMATE

DUAL PURPOSE

GRASS FED

OBJECTIVE BRED

stirlingdohne.com.au

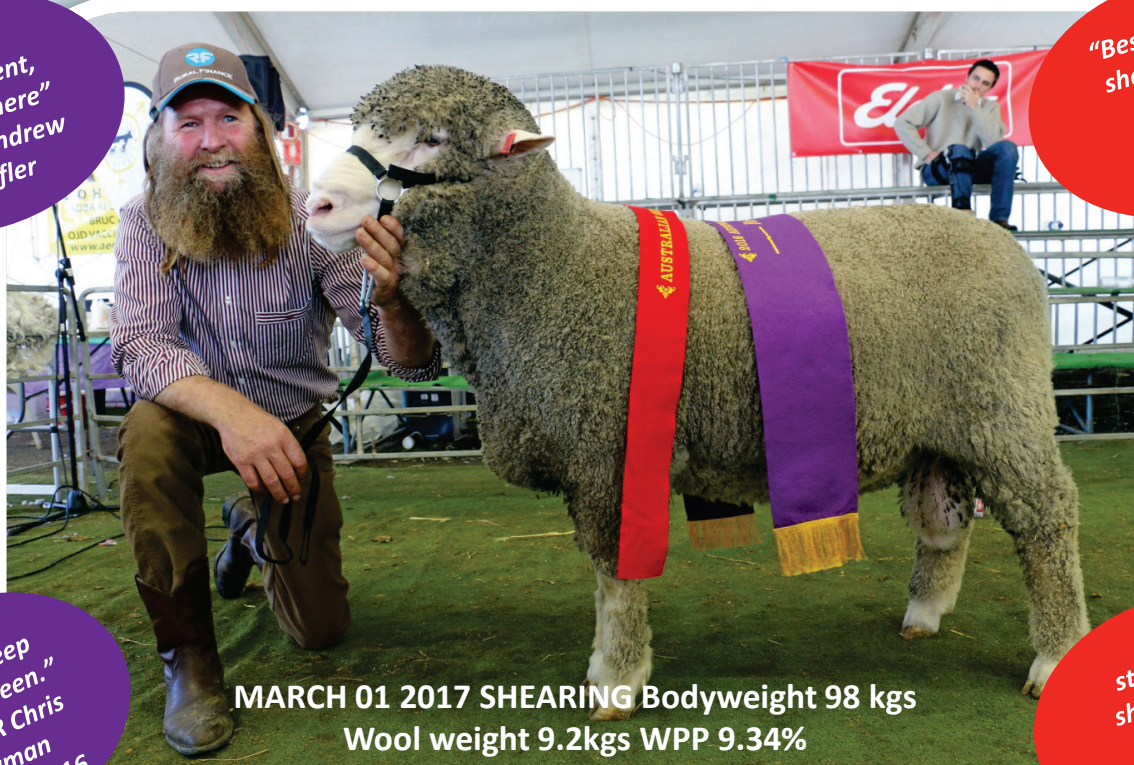
PRINCIPAL: Murray Rogerson (03) 55778248 murrayrogerson1954@gmail.com

CLASSER: Chris Bowman 0429 935 101

Reserve Grand Champion Ram 2016 ASWS

"Wool
Magnificent,
the best here"
JUDGE Andrew
Bouffler

"Best wooled
sheep in the
tent"
Cameron
McMaster



"The best
Dohne sheep
I've ever seen."
CLASSER Chris
Bowman
October 2016

MARCH 01 2017 SHEARING Bodyweight 98 kgs
Wool weight 9.2kgs WPP 9.34%

"Best
structured
sheep in the
tent"
Cameron
McMaster

FOUR MAJOR TRAITS AT 1 PERCENTILE

Animal ID	WWT	PWT	YWT	PFAT	PEMD	YCFW	YFD	YFDCV	YWEC	NLW	MWWT	DOHNE
ST140079	5.8	6.7	8.2	-0.2	0	16.4	-0.1	-0.9	23	0%	-0.4	143.1
Accuracy	73	71	75	61	67	67	82	73	41	41	52	50
Percentiles	0.7	0.8	0.9	90	85	1.3	70	30	74	62	87	13

APPEARANCES IN 2017

Australian Sheep & Wool Show, Bendigo VIC - 14 to 16 July

Hamilton Sheepvention, Hamilton VIC - 7 & 8 August

Elders Riverina Sheep Expo, Deniliquin NSW - 18 August

13th Annual Victorian Invitation Ram Sale, Ballarat VIC - 2 November

8th Annual On Property Ram Sale, Glenthompson VIC - 9 November



• Kathryn Egerton-Warbuton, Charles Sturt University, Western Australia, with Western Australian Dohne Breeders' Association, president, Rhys Parsons.

Forging new relationships between producers and students

VANESSA BINKS
The Land, NSW

ONE year on and an education partnership forging new relationships between Dohne producers and students entering the livestock industry, is opening pathways for the long term future of the breed.

In July 2015, a flourishing partnership between Muresk Institute, south west of Northam in the Western Australian central wheatbelt and the Western Australian Dohne Breeders' Association began, in an attempt to secure the breeds future and industry at large with younger generations.

The idea for practical experience for was born after Charles Sturt University, Bachelor of Agricultural Business Management degree students, attended the WA Sire Day as part of their studies in livestock production.

Educator at Muresk Institute, Kathryn Egerton-Warbuton, Charles Sturt University, said the event prompted the initial exposure to the Dohne breed, after viewing first hand the application of breeding and selection theory to practical situations.

Ms Egerton-Warbuton said the opportunity to build on this initial exposure was then granted by providing a demonstration flock to be run at the Muresk Institute.

The partnership was launched on July 29 2015 with the Western Australian Dohne Breeders' Association donation of 200 commercial Dohne ewes to the Muresk Institute flock.

"It allows students to see sheep breeding in action – I can talk about it all I like in the classroom but until they actually see people using the tools available to make breeding decisions it doesn't really hit home," Ms Egerton-Warbuton said.

"They have exposure to performance breeding – the on-site flock has given the opportunity to make the measurements on an ongoing basis and use them as a way of studying the performance of the breed."

Rhys Parsons, Western Australian Dohne Breeders' Association president, believes the partnership has "given the industry a great lift" and allowed Dohne breeders a glimpse into a positive future among Australia's young people.

"Education in livestock has been dropping off for too long and this partnership has given it a boost," Mr Parson said.

"Some areas of livestock are daunting, such as genetics, and through Dohne breeders being involved, they are making it clearer for students to comprehend."

Article and photo courtesy of The Land, NSW.



www.westwail.com.au



**ANNUAL RAM SALE
THURSDAY 19TH OCT 2017
HORSHAM SHOW GROUNDS**

"We have the Rams for your Ewes"

**Luke Ellis 0428 160 482
Stan Ellis 0428 842 236
Email: ljkrellis@gmail.com
1013 West Wail Road, Pimpinio Vic 3401
Flock No 81 | Est 2001 | Prefix WW**

THE GLOBAL BREED

"The number of rams sold on official sales was used to estimate the market share of the Dohne Merino breed in the broader South African Merino sheep industry as 40.6 percent."

Koos Vosloo, President
Dohne Merino Breed Society of South Africa



• Inaugural Uruguayan Workshop May 2017 presented by Allan Casey, ADDBA Technical Advisor.

Dohne substantially increasing in Uruguay

ROBERTO CARDELLINO
Delta Consultants
Uruguay

SINCE the introduction of the Dohne Merino Breed into Uruguay in 2002, as the first South American country in doing this, there has been a continuous and sustained development of the breed.

After 15 years, the number of ram breeding flocks has increased substantially. The present number of breeders associated to the Uruguayan Dohne Breeders Association (SCMD) are close to 30, with 8 ram breeding flocks selling more than 600 rams per year to other Dohne ram breeding flocks or to commercial Corriedale and Merino flocks throughout the country.

Main results obtained by the research organisations in the country, comparing the performance of pure Corriedale flocks with F1, F2 or F3 Dohnes x Corriedale crosses clearly have shown that there was a big reduction in fibre diameter (4.5 microns in the first generation), with a slight reduction in fleece wt, better wool colour as well as better lamb meat traits (better conformation, higher proportion of valuable lean cuts). Average annual rainfall can range from 1000mm to 1300mm



• Gabriel Capurro, president of the Uruguayan Dohne Breeders with ADDBA Technical Advisor Allan Casey at the recent Uruguayan Dohne Breeders Workshop.

throughout the four seasons. It is estimated that the proportion of animals in the national flock with some degree of Dohne genetics has reached a value close to 10%, which represents 700,000 animals approximately.

Since the beginning of the

introduction of the breed in the country, the Association has been promoting stud breeders to perform objective performance, recording full pedigree and become involved in genetic evaluations.

The involvement of INIA (the National Research Institution) and also of SUL (the Uruguayan Wool Secretariat) in performing experimental and impartial evidence of the benefits of the Dohne in crosses with other breeds, in particular the Corriedale, was of outmost importance.

Despite a small reduction in fleece wt (10%) and a small reduction in staple length, there was a reduction of the diameter in 4 microns in one generation, whiter wool (reduction of 25% in y-z values), faster growing rates (10%) and better meat quality (bigger eye muscle area with less fat).

Initial clientele were mostly Corriedale breeders, but in the last years, it has been observed a very marked increase in the number of Merino breeders wanting to improve meat characteristics, without affecting their production of wool.

The last three years, average prices of Dohne rams in open sales were the highest of all the breeds.

"The Dohne has established itself as a major Sheep breed originating in South Africa and over the last 19 years spreading to Australia, New Zealand, Uruguay, Chile, Argentina, Falkland Islands, Peru and Russia."

Comparison Dohne - Corriedale (Uruguay)

- Increases 9% weaning weight
- Increases the area of muscle
- Reduces the degree of carcass fat
- Increases carcass weight by 10%
- Reduces clean fleece weight on average 10-15%
- Reduces fibre diameter between 15 and 20%
- Reduces staple length 13-15%.
- Reduces the degree of wool yellowing: y - z (23 to 26%)

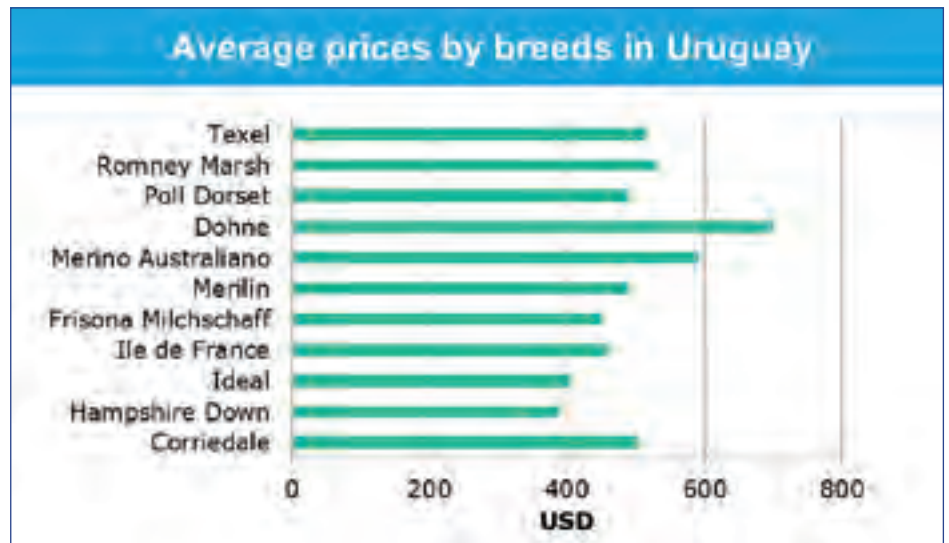
The results of crossing Dohne x Merino

- Animals with much better conformation
- Lambs show better growth rate and carcass yields of > 48%
- Animals show more hardiness and easycare
- Animals with less wrinkles and polled
- Better reproductive behaviour
- In crosses over medium Merino, reductions in diameter
- Small reduction in fleece weight

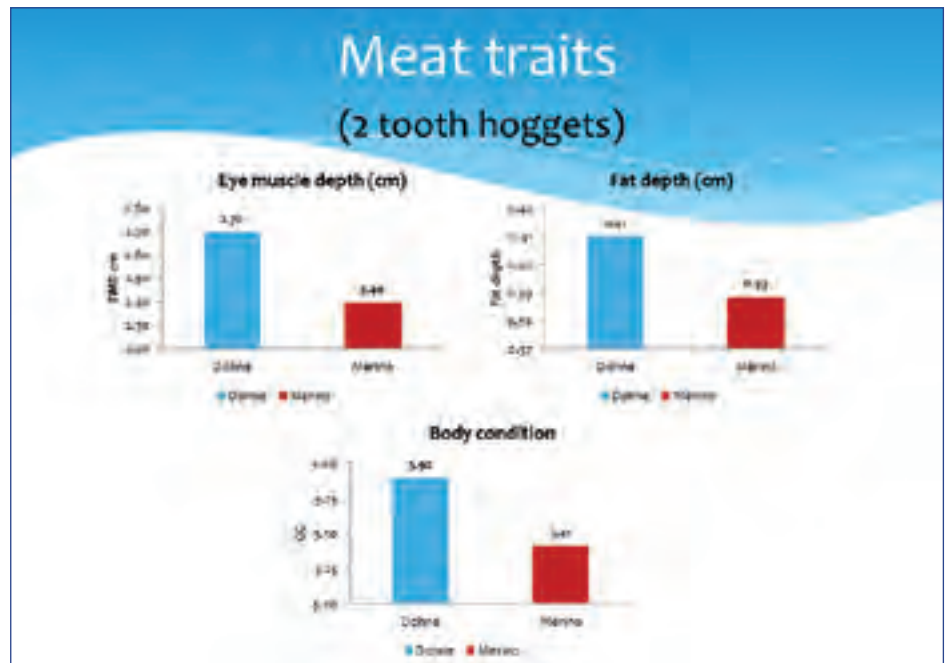
Comparison until weaning

- At birth: Dohne lambs are 400 grams heavier than Merinos.
- At marking (50 days): Dohnes 3.3kg heavier than Merinos.
- At weaning: Dohne lambs 4.8 kg heavier than Merinos.
- Type of birth: 10% more incidence of twinning in Dohne ewes.

"The Dohne breed will continue being a very important tool to increase market opportunities for sheep meat and wool in the South American countries."



• Average prices by breeds in Uruguay 2016.



• Meat traits in Uruguay 2016.



Uruguay 2018

Merino Conference

Monday 9 April to Saturday 14 April

Dohne Tour

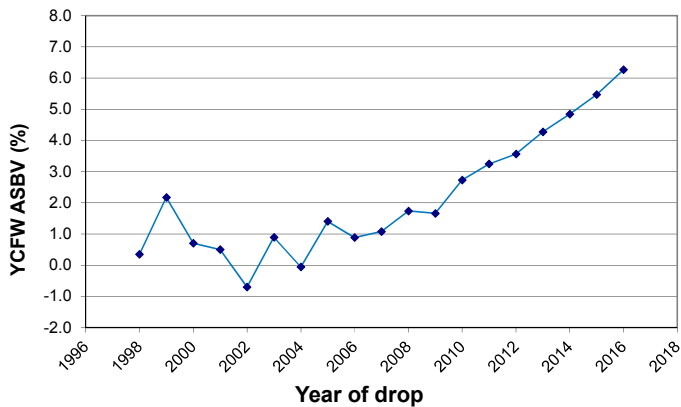
Monday 16 April to Friday 20 April

www.merinouruguay2018.org



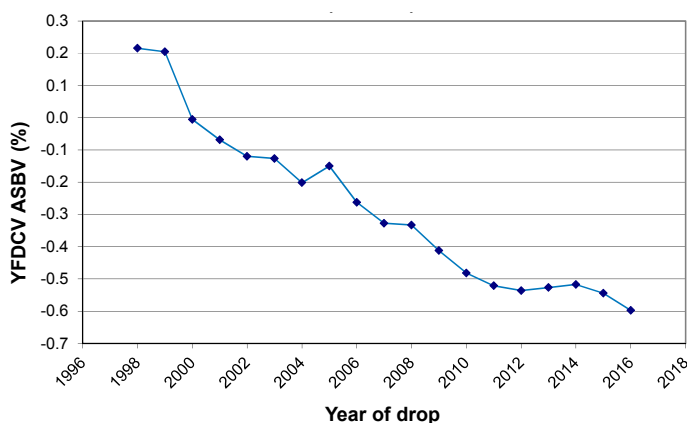
ASBVs - What does it all mean?

Clean Fleece Weight (YCFW): heritability : moderate 30%



- Fleece measurements are taken between 270 and 540 days of age, when the animal has a minimum of 150 days of wool growth
- Being a dual purpose breed we aim to maintain a meat to wool ratio that does not impede fertility.

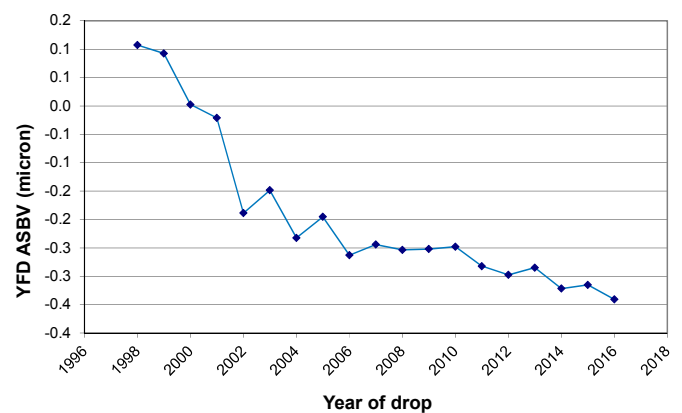
Fibre Diameter Coefficient of Variation (YFDCV): heritability : moderate 30%



- Mid side samples are taken at the same time as CFW
- Selecting for a lower CV will produce progeny that have less variation in FD
- Lower CV results in improved staple strength and better processing

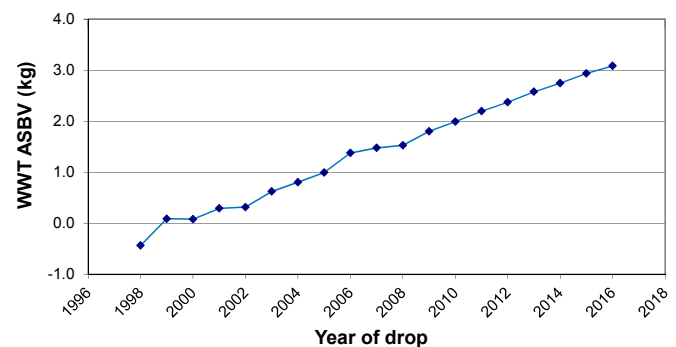


Fibre Diameter (YFD): heritability : high 55%



- Mid side samples are taken at the same time as Clean Fleece Weight
- The aim is to maintain Fibre Diameter between the medium to fine wool range

Weaning Weight (WWT): heritability : high 20%

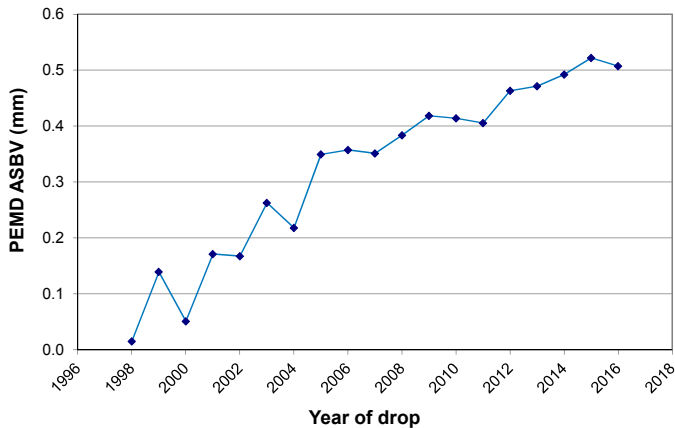


- All lambs are weighed between 42 and 120 days of age (ideally 100 days)
- This weight reflects the mothers' milking ability and maternal characteristics
- A higher WWT will highlight the early maturing lambs and give a commercial breeder the opportunity to reach target weights earlier

"Net Lambs Born (NLB) EBV advantage of Dohne rams that have entered the Merino Superior Sires comparison averages 22% higher than the merino (www.merinosuperiorsires.com.au accessed 9th May 2017)."

Dr Graham Lean, Agrivet Business Consultancy, Hamilton VIC

Eye Muscle Depth (PEMD): heritability : moderate 20%

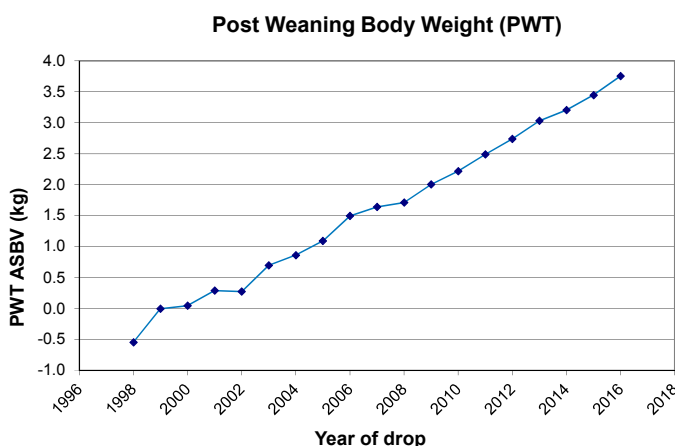


- Lambs are scanned between 210 and 300 days of age
- High yielding carcasses
- High priced cuts
- High muscle to bone ratio



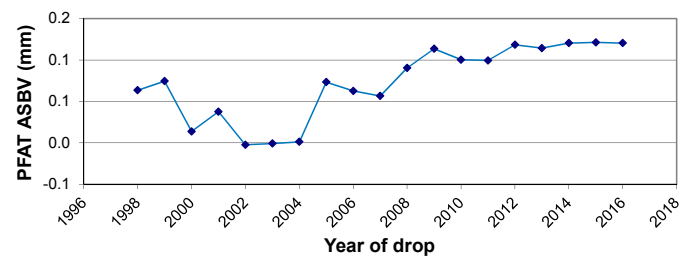
• Tom Bowen and Roy Addis, Landmark Katanning eye muscle scanning seven month old Dohne ewe lambs.

Post Weaning Weight (PWT): heritability : moderate 30%



- Lambs are weighed between 210 and 300 days of age to achieve commercial objectives of turning lambs off earlier, indicating a better feed conversion ratio
- This weight is representative of the lamb's ability to grow without their mothers' influence
- Lambs that reach target slaughter weights as quickly as possible are more profitable

Fat (PFAT): heritability : moderate 20%



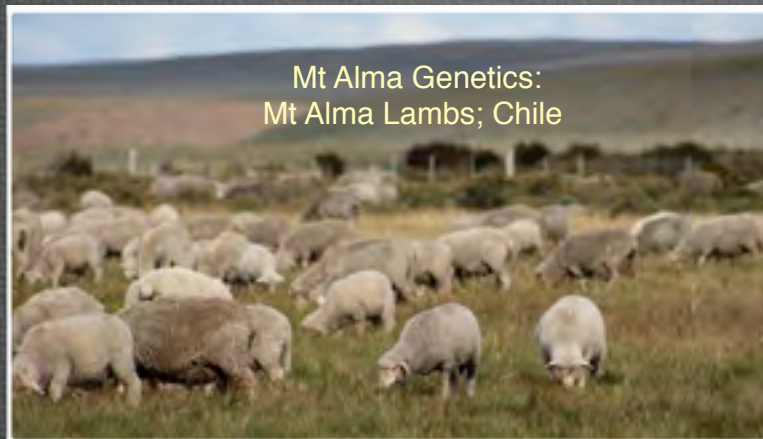
- Measured at the same time as EMD
- Relates to better ewe fertility, higher lamb survivability and doing ability
- Improves meat eating qualities



Mt Alma

PERFORMANCE GENETICS

MT ALMA PADDOCK REARED RAMS 100% PURE DOHNE:
GENUINE DUAL PURPOSE EVEN & TRUE TO TYPE



BIG, SQUARE & EASY CARE
2016 RAM SALE 169/169 SOLD TO \$5400 & AVERAGE \$2252



500
Rams
Available



*"Thank you to all
our valued
clients for your
continued
support. We look
forward to
seeing you this
2017 ram
season."*

IKE: 0427 602 488
ERIC: 0417 072 050
www.mtalma.com.au



AUSTRALIAN DOHNE STUDS CONTACTS

New South Wales

ALFOXTON

Chris Clonan
ARMIDALE NSW 2350
M: 0429 125 567
alfoxtton@bigpond.com.au

AMAROO STATION

Lachlan & Delphine Johnstone
EMMAVILLE NSW 2371
amaroo@skymesh.com.au

CALGA

Margie Pye
COONAMBLE NSW 2829
M: 0427 996 911
www.calga.biz

COLESLEA

John Evans
LEETON NSW 2705
M: 0428 262 268
coleslea@skymesh.com.au

COONONG

Tom Holt
URANA NSW 2645
M: 0417 422 630
coonong@outlook.com.au

DD DOHNES

Margie Pye
COONAMBLE NSW 2829
M: 0427 996 911
www.calga.biz

DIMENSION

Dan Carey
FROGMORE NSW 2586
M: 0429 856 238
ballyhooleyrd@skymesh.com.au

GULLENDAH

Peter & Margot Hughes
BALDRY NSW 2867
M: 0427 679 235
www.gullendah.com.au

HYLAND

Karen Hyland
GEURIE NSW 2831
M: 0418 410 487
p.khyland@bigpond.com

KARDINIA

Don Mills
COROWA NSW 2646
M: 0427 872 808
www.kardiniadohnes.com.au

KOMBYANA

Peter Conn
WELLINGTON NSW 2820
M: 0428 638 843
towri06@gmail.com

MACQUARIE

John Nadin & Greg McCann
WARREN NSW 2824
M: 0427 474 610 John
M: 0499 865 120 Greg
www.dohnes.com.au

MACQUARIE - WARDRY

John Nadin
WARREN NSW 2824
M: 0427 474 610
www.dohnes.com.au

MIDGERY

David Berrell
WALGETT NSW 2832
M: 0428 562 486
berrell5@bigpond.com

PIPPADELL

Wayne & Phillipa Connelly
BALALA NSW 2358
P: 02 6778 7454
pippa@skymesh.com.au

ROSEVILLE PARK

Graham Coddington
WELLINGTON NSW 2820
M: 0428 638 129
www.coddingtonpoll.com.au

TABLELANDS

Josh Frazer
ARMIDALE NSW 2350
M: 0424 332 313
joshfrazer@hotmail.com

UARDRY

Margie Pye
COONAMBLE NSW 2829
M: 0427 996 911
www.calga.biz

WARDRY

John Nadin
WARREN NSW 2824
M: 0427 474 610
www.dohnes.com.au

WELBON

Chris Carrigan
GARAH NSW 2405
M: 0427 542 117
welbon@skymesh.com.au

WILLOW SPRINGS

Brian Wallis
MICHELAGO NSW 2650
M: 0428 285 244
kantoa@bigpond.com

Victoria

AERO

Stephen Reddie
MELTON VIC 3337
M: 0409 420 452
stephen@aerodohne.com.au

BULTARRA

Bruce Peat
ECHUCA VIC 3564
M: 0418 505 175
meat3@bigpond.com.au

BURNBANK

Carol Hale
MOORALLA VIC 3314
M: 0408 058 668
www.burnbankdohne.com.au

CLEARVIEW

Roderick Seers
GLENGOWER VIC 3370
M: 0400 967 117
jodieseers@bigpond.com

GLENAROUA

Alistair Greenshields
KILMORE VIC 3764
M: 0429 013 845
cheryl.greenshields@bigpond.com

KOONIK

Fiona Cameron
NURCOUNG VIC 3401
M: 0428 863 518
www.koonikdohnes.com.au

NAREEB NAREEB PARTNERSHIP

Richard Beggs
NAREEB NAREEB VIC 3293
M: 0429 025 056
www.nareebnareeb.com.au

STIRLING

Murray Rogerson
GLENTHOMPSON VIC 3293
P: 03 5577 8248
www.stirlingdohne.com.au

WEST WAIL

Stan & Judy Ellis
PIMPINIO VIC 3401
M: 0428 160 482
www.westwail.com.au

AUSTRALIAN DOHNE STUDS CONTACTS

South Australia

BABIRRA

Craig Farrow
STANSBURY SA 5582
M: 0427 525 000
clfarrow@internode.on.net

CLOVER DOWNS

Alex & Georgia Mattschoss
OWEN SA 5460
M: 0400 991 736
cloverdowns15@gmail.com

COOLIBAR

Brian & Rosalie Calderwood
PORT LINCOLN SA 5607
M: 0428 846 017
www.coolibarstud.com

EAGLE RIDGE

Paul & Jacqui Webb
COWELL SA 5602
M: 0427 296 022
jacquiwebb2@bigpond.com

GLEN HOLME

Allen & Joy Kelly
MANOORA SA 5414
M: 0409 018 943
www.glenholmedohne.com

GOLDVALE

Graham Crawford
CRYSTAL BROOK SA 5223
M: 0417 620 055
goldvale@bigpond.com

HAMILTON RUN

Greg Andrews & Nicole Luckraft
JAMESTOWN SA 5491
M: 0428 161 746
www.hamiltonrun.com.au

HILL VIEW STUD

Peter & Heather Holmes
STREAKY BAY SA 5660
M: 0427 266 939
frog@eyreonline.com

ILLAWONG

Ross Hamilton
VICTOR HARBOR SA 5211
M: 0429 674 527
kiwitexel@gmail.com

JAG

Greg Peterson & Jude Eustice
HAHNDORF SA 5245
M: 0429 401 767
www.dohnemerinos.com.au

K.D DOHNES

Kym Staude
BORDERTOWN SA 5268
M: 0412 070 971
www.kdsheepstuds.com.au

MT ALMA PROPS

Ike & Eric Ashby
M: 0427 602 488 Ike
M: 0417 072 050 Eric
COONALPYN, SA 5265
www.mtalma.com.au

O'BRIEN

Darren & Jodie Reseigh O'Brien
KYANCUTTA SA 5651
M: 0419 772 173 Darren
M: 0488 186 677 Jodie
www.obriendohne.com

ULOOLOO STATION

Greg & Robert Hall
HALLETT SA 5419
M: 0417 833 893 Greg
M: 0428 439 000 Robert
hallmint5@activ8.net.au

NAREEB NAREEB DOHNE STUD

GLENTHOMPSON, VICTORIA



RAM SALE DATE
Friday 27 October 2017

ALSO DISPLAYING RAMS AT
HAMILTON SHEEPVENTION
AUGUST 7 & 8

Aims: To maximise returns to commercial producers through meat and wool in a sustainable and profitable way.

HIGH RAINFALL GENETICS

Enquiries: **Richard Beggs**
Ph: 03 5577 8222 or 0429 025 056

Hugh Beggs
Ph: 03 5577 8238 or 0427 778 238
Email: office@nareebnareeb.com.au
www.nareebnareeb.com.au

AUSTRALIAN DOHNE STUDS CONTACTS

Western Australia

BOONADINE

Dennis Warnick
YORK WA 6302
M: 0409 897 018
deniswarnick@hotmail.com

CANAAN

Doug Pease
WYALKATCHEM WA 6485
M: 0429 811 232
canaan@iipb.net.au

CHIRNIMINUP

Trenton & Rachel Browne
NYABING WA 6341
M: 0408 221 576
www.brownefarming.com.au

C-VIEW

Lorraine & Laurie Lowe
ESPERANCE WA 6450
M: 0427 907 500
lorrainelowe7@gmail.com

DENVALE

Greg & Linda Sounness
MOUNT BARKER WA 6324
M: 0499 444 093
denvaldohnes@westnet.com.au

DOWELL

Terry Blake
KATANNING WA 6317
M: 0427 646 555
terryblake@bigpond.com

FAR VALLEY

David Kain
ARTHUR RIVER WA 6315
M: 0429 626 012
www.farvalleydohne.com.au

GLENLEA

Alex Leach
KATANNING WA 6317
M: 0417 965 347
www.glenleadohnes.com

HAROLD PARK

Harold Wass
COOROW WA 6515
M: 0407 344 517 Harold
M: 0427 531 908 Charles
www.haroldparkdohne.com.au

JARRAMONGUP

Rex Parsons
JERRAMUNGUP WA 6337
M: 0428 351 091
rdtl.parsons@bigpond.com

KINTAIL PARK

Kim, Colleen & Rhys Parsons
JERRAMUNGUP WA 6337
M: 0428 351 128 Colleen
M: 0427 351 500 Rhys
www.kintailparkdohnes.com.au

KOOBELUP PASTORAL COMPANY

Ian Hanna
KATANNING WA 6317
M: 0427 215 076
hann2304@westnet.com.au

MOLLERIN ROCK

Ian & Steph Longmuir
KOORDA WA 6475
M: 0427 770 728
www.mollerinrockdohnes.com.au

NOORLA

Jeremy Genders
WILLIAM WA 6391
M: 0429 689 920
genderjn@gmail.com

STRATH-PARK

Peter & Michelle Dewar
BROOMEHILL WA 6318
M: 0428 241 344
strath_haddon@reachnet.com.au

Roseville Park

DOHNE

Your Opportunity to Invest in Quality

Roseville Park On Property Production Sale

Friday 1st September 2017
at "Mount Nanima" 6773 Goolma Rd Wellington NSW
Inspection 10am Sale 1pm

Roseville Park Hamilton Production Sale

Wednesday 8th November 2017
at "Clifton" Hamilton VIC
Inspection 10am Sale 1pm

Agents :



Owners:

Graham & Susan Coddington
P: 02 6845 2772 M: 0428 638 129
g.coddington@rosevilleparkdohne.com.au

Western Ram Depot:

Victor Sharpe
P: 02 6874 4949
"Mundiwa" Brewarrina NSW

www.rosevilleparkdohne.com.au



2016 National Dohne Ram Sale, Top Price Ram \$20,000 sold to O'Brien Dohne Stud, Kynacutta SA, Nareeb Nareeb Dohne Stud, Nareeb Nareeb VIC, and Alfoxton Dohne Stud, Armidale NSW.



2016 National Dohne Ram Sale Top Priced Ram RP140055

INTERNATIONAL CONTACTS

Argentina

SECRETARY
ALEJANDRO VOZZI
CHUBUT
P: 54 2965 532807
www.provino.com.ar

CABANA LAS VEGAS

Jim Sama
SANTA CRUZ
M: 54 2966 154 13527
sama.jim@gmail.com

Chile

DANIEL GROVES
PUNTA ARENAS
P: 56 09 85020683
www.agropampa.cl

PATAGONIA

Francisa & Nicolas Petrovich
PUNTA ARENAS
P: 56 61 2614505
petrovich.francisca@gmail.com

New Zealand

GLENCARIN
Martin Pattie
MARLBOROUGH
M: 0276 509 897
www.glencairn.co.nz

South Africa

PRESIDENT
Koos Vosloo
EDENBURG 9908
M: 270 825 640 951
deput@lantic.net

MANAGER
KOBUS DELPORT
STUTTERHEIM
P: 27 43 683 1330
www.dohnemerino.com

Cameron McMaster
NAPIER 7270
M: 270 827 742 075
cameron@haznet.co.za

Uruguay

PRESIDENT - Gabriel Capurro
LA PASTORAL URUGUAY
MONTVIDEO
M: 598 9961 4002
www.lapastoral.com.uy

VICE PRESIDENT - Javier Fillat
LA EMPASTADA
MONTVIDEO
Javier 598 9936 2051
camposifillat@gmail.com

ROBERTO CARDELLINO
CANELONES
M: 598 9964 1664
www.delta-animalproduction.com

NAMBI GUASU
Roberto Quadrelli
MELO / CERRO LARGO
M: 598 9885 9373
www.merinodehne.com

TRES ARBOLES
Daniel Rubio
MONTEVIDEO
P: 598 2600 5857
www.dohnetresarboles.com.uy

Be sure

to achieve full
genetic potential

Live Animal, Semen and Embryo Export Centres of Excellence
partnered with Australia's leading Seed Stock Producers.

International teams with extensive experience in
Laparoscopic Artificial Insemination and Embryo Transfer
Technique's and Training.

Independent, Professional and Ethical advice on Domestic
and Export transactions.



Contact us on:

Ph 0011 61 3 5881 5515 – Southern NSW/VIC/DENILQUIN
Ph 0011 61 2 6884 3204 – Northern NSW/QLD/DUBBO
dohne@apiam.com.au

PROUDLY PART OF



Local knowhow.
Global knowledge.



ADBA CONTACTS

National

PRESIDENT

John Nadin
WARREN NSW 2824
M: 0427 474 610
john@macquariedohnes.com.au

VICE PRESIDENT

Rachel Browne
NYABING WA 6341
M: 0408 221 576
rachelbrowne04@gmail.com

SECRETARY

Tessa Dawes
GOODWOOD SA 5034
P: 08 8210 5229
secretary@dohne.com.au

TECHNICAL ADVISOR

Allan Casey
ORANGE NSW 2800
M: 0408 279 719
tech.assist@dohne.com.au

DOHNE DATA MANAGER

Brett Wilson
LEURA NSW 2780
M: 0411 541 034
data@dohne.com.au

INTERNATIONAL RELATIONS OFFICER

Rachel Browne
NYABING WA 6341
M: 0408 221 576
rachelbrowne04@gmail.com

New South Wales / Queensland

PRESIDENT

David Berrell
WALGETT NSW 2832
M: 0428 562 486
berrell5@bigpond.com

South Australia

PRESIDENT

Eric Ashby
COONALPYN, SA 5265
M: 0417 072 050
ericmailbag1@gmail.com

Victoria / Tasmania

PRESIDENT

Murray Rogerson
GLENTHOMPSON VIC 3293
P: 03 5577 8248
murrayrogerson1954@gmail.com

Western Australia

PRESIDENT

Rhys Parsons
JERRAMUNGUP WA 6337
M: 0427 351 500
rhysparsons@westnet.com.au

COOLIBAR

BS & RG CALDERWOOD PTY LTD

Brian:0428846017 Zac:0427879927

coolibar@coolibarstud.com

www.coolibarstud.com

“Rams available from mid August”

- We have developed productive wool growing skins, producing pearly white deeply crimped wools.
- Longer bodies with good feet and topline.
- Clear soft well rippled muzzles.
- No bare patch behind ears.
- Arse ends to die for.

CALGA

UARDRY *and now*

DD Dohnes



Will be at the following venues in 2017

- *Coonamble Agfair - 1st April 2017*
- *Australian Sheep & Wool Show Bendigo -
14th to 16th July 2017*
- *Nyngan Ag Fair - 30th July 2017*
- *Elders Wool Expo Deniliquin - 11th August 2017*
- *Westech Barcaldine - 12th & 13th September 2017*
- *13th Coonamble Production Sale - 18th September 2017*
- *4th Southern Production Sale Wanganella -
5th October 2017*

Contact Us

Give us a call or contact us for more information about our studs at:

Calga & Uardry Dohne Studs
PO Box 250
Coonamble NSW 2829

Visit us on the web at
www.calga.biz
Facebook:
Calga Dohnes

Studmaster

Jason Southwell
Ph: 0429 039 521
Email:
j.southwell@mcmassoc.com.au

ADBA Assessor

Alan Clarke
Ph: 0429 828 987
Email:
aeclarke.21@outlook.com

Stud Representative

Bill Mildren
0427 243 221

Stud Principal

Margie Pye
calgauardrydohnes@calga.biz
Ph: 0268256203 or
0427 996 911
Email:
margiep01@bigpond.com

Calga Manager

Stuart Davidson
Ph: 0428 934 778
Email:
schoonee1@hotmail.com

Caroonboon Manager

John Stephens
Ph: 0429 930 692
Email: js@calga.biz





www.dohne.com.au



AUSTRALIAN DOHNE BREEDERS ASSOCIATION

Dohne Commercial Member Benefits

- Email newsletters
- Access to advertise sheep for sale on Dohne Social Media
- Direct links to the SG website and sale catalogues
- Info on Field Days
- Future plans for a Dohne QA lamb program
- Sheep updates

Become a Dohne commercial member

As an existing or potential breeder of Dohnes, commercial membership is a very inexpensive way of exposing yourself and your business to both historical and up to date information about this versatile and productive breed.

Since the introduction of the Dohne to Australia in 1998, from South Africa, the breed has seen constant growth. The recent MLA sheep breed survey showed that Dohnes have an influence in over 20% of the Australian sheep flock.

The Dohne Council and Stud Breeders work tirelessly for breed improvement. Council is working on promotion of the breed and implementing industry networks to obtain the best possible financial returns for the sheep and lamb products you work so hard to produce.

For more information contact the office 08 8210 5299 or secretary@dohne.com.au

www.dohne.com.au



LAZERLINE

*DOHNE ASSESSMENT & CONSULTANCY
LASERSCAN WOOLTESTING. EMD SCANNING
DATA COLLATION & SUBMISSION*

IAN BRADTKE

POSTAL: PMB 15 PETERBOROUGH SA 5422

MOBILE : 0407 729 341 EMAIL: ian@lazerline.com.au

WEB: www.lazerline.com.au

- **Profitable**
- **Predictable**
- **Performers**



Monday 11th September 2017

120 rams

11th annual on property ram sale, Nyabing Western Australia

Friday 15th September 2017

60 rams

4th annual Northam ram sale, Jubilee Oval Northam WA



Rachel Browne

p: 0408221576

e: trentonandrachel@activ8.net.au

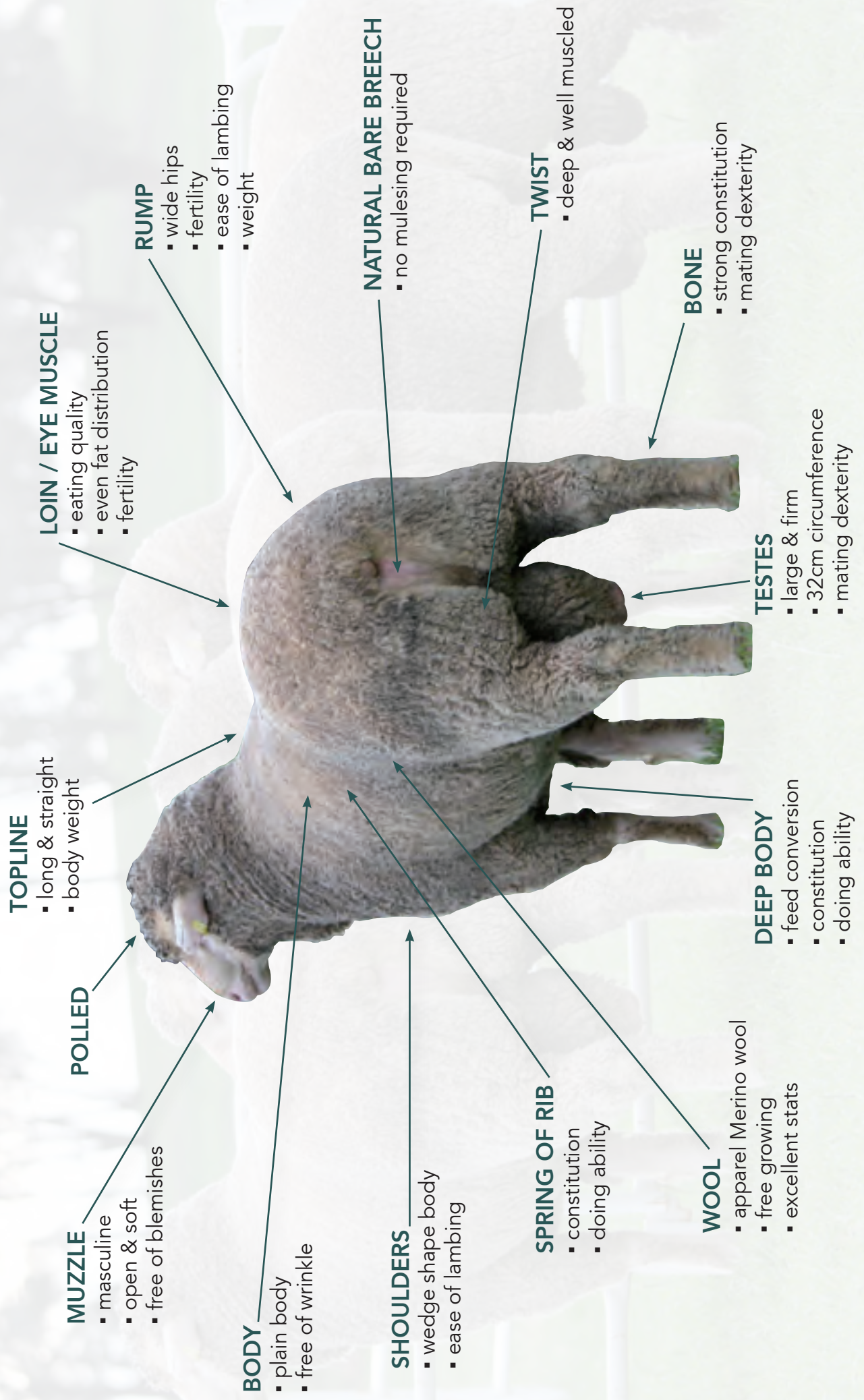
f: [brownefarming](#)

Murray Drage

p: 0429660877



ATTRIBUTES OF THE TYPICAL DOHNE



Australian Dohne Breeders Association

Contact Details:
Association Secretary

T: 08 8210 5229
F: 08 82314173

Address:
PO Box 108
Goodwood SA 5034

secretary@dohne.com.au



DOHNE
AUSTRALIA

AUST. \$5.95

